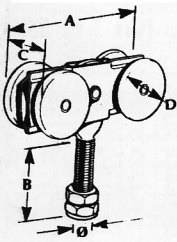
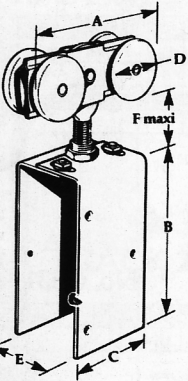


## No. 56 METAL DOORS



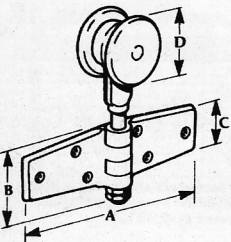
Track no.	Hanger no.	Dimensions					Door Weight Capacity
		A	B	C	D	Ø	
290	56K/N	3 <sup>7</sup> / <sub>16</sub>	1 <sup>1</sup> / <sub>4</sub>	1 <sup>1</sup> / <sub>8</sub>	1 <sup>1</sup> / <sub>16</sub>	5 <sup>1</sup> / <sub>32</sub>	300 lbs.
	56K/S						300 lbs.
	56K/S 200						400 lbs.
301	56A/S	5 <sup>5</sup> / <sub>8</sub>	2 <sup>3</sup> / <sub>4</sub>	1 <sup>11</sup> / <sub>16</sub>	2 <sup>1</sup> / <sub>32</sub>	5 <sup>5</sup> / <sub>8</sub>	600 lbs.
	56A/N						800 lbs.
301H	56A/S	5 <sup>5</sup> / <sub>8</sub>	2 <sup>3</sup> / <sub>4</sub>	1 <sup>11</sup> / <sub>16</sub>	2 <sup>1</sup> / <sub>32</sub>	5 <sup>5</sup> / <sub>8</sub>	800 lbs.
	56A/S						1000 lbs.
305	56C/S	6 <sup>3</sup> / <sub>8</sub>	2 <sup>3</sup> / <sub>4</sub>	1 <sup>11</sup> / <sub>16</sub>	3	5 <sup>5</sup> / <sub>8</sub>	1500 lbs.
307	56F/S	8 <sup>7</sup> / <sub>16</sub>	3 <sup>3</sup> / <sub>8</sub>	2 <sup>1</sup> / <sub>4</sub>	3 <sup>7</sup> / <sub>16</sub>	5 <sup>1</sup> / <sub>16</sub>	2500 lbs.
	56FJ/S						4400 lbs.

C = Outside



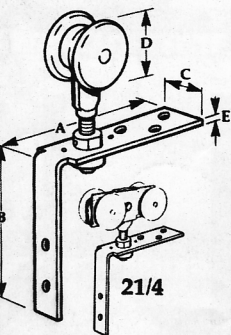
## No. 53 WOOD DOORS

Track no.	Hanger no.	Dimensions					Door Weight Capacity
		A	B	C	D	E	
290	53K/N	3 <sup>7</sup> / <sub>16</sub>	3 <sup>3</sup> / <sub>4</sub>	2 <sup>1</sup> / <sub>4</sub>	1 <sup>1</sup> / <sub>16</sub>	1 <sup>1</sup> / <sub>2</sub> -1 <sup>3</sup> / <sub>4</sub>	300 lbs.
	53K/S						300 lbs.
	53K/S 200						400 lbs.
301	53A/S	5 <sup>5</sup> / <sub>8</sub>	7	3	2 <sup>1</sup> / <sub>32</sub>	1 <sup>1</sup> / <sub>2</sub> -2 <sup>1</sup> / <sub>4</sub>	600 lbs.
	53A/N						800 lbs.
301H	53A/S	5 <sup>5</sup> / <sub>8</sub>	7	3	2 <sup>1</sup> / <sub>32</sub>	1 <sup>1</sup> / <sub>2</sub> -2 <sup>1</sup> / <sub>4</sub>	800 lbs.
	53A/N						1000 lbs.
305	53C/S	6 <sup>3</sup> / <sub>8</sub>	7	3	3	1 <sup>1</sup> / <sub>2</sub> -2 <sup>1</sup> / <sub>4</sub>	1500 lbs.
307	53FJ/S	8 <sup>7</sup> / <sub>16</sub>	8	2 <sup>1</sup> / <sub>2</sub>	3 <sup>7</sup> / <sub>16</sub>	2 <sup>3</sup> / <sub>4</sub>	4400 lbs.



## No. 62 FOLDING DOORS

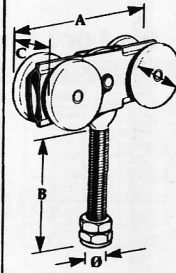
Track no.	Hanger no.	Dimensions		
		A	B	D
290	62K	7 <sup>1</sup> / <sub>16</sub>	2 <sup>1</sup> / <sub>4</sub>	1 <sup>1</sup> / <sub>16</sub>
301	62A	7 <sup>1</sup> / <sub>16</sub>	2 <sup>1</sup> / <sub>4</sub>	1 <sup>1</sup> / <sub>16</sub>
301H	62A	7 <sup>1</sup> / <sub>16</sub>	2 <sup>1</sup> / <sub>4</sub>	2 <sup>1</sup> / <sub>32</sub>
305	62C	21 <sup>1</sup> / <sub>2</sub>	3 <sup>3</sup> / <sub>4</sub>	2



## No. 21 FOLDING DOORS

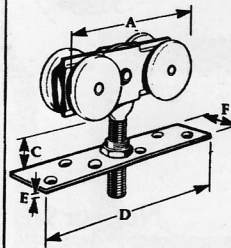
Track no.	Hanger no.	Dimensions			
		A	B	C	D
290	21K/S	6	6	1	1 <sup>1</sup> / <sub>16</sub>
	21K/N				3 <sup>1</sup> / <sub>16</sub>
301	21A/S	7	6	1 <sup>1</sup> / <sub>2</sub>	2 <sup>1</sup> / <sub>32</sub>
	21A/S				1 <sup>1</sup> / <sub>4</sub>
305	21C/S	7	6	1 <sup>1</sup> / <sub>2</sub>	3

## No. 56X METAL DOORS



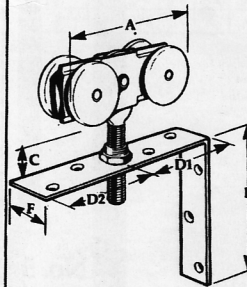
Track no.	Hanger no.	Dimensions					Door Weight Capacity
		A	B	C	D	Ø	
290	56KX/S	3 <sup>7</sup> / <sub>16</sub>	4 <sup>3</sup> / <sub>8</sub>	1 <sup>1</sup> / <sub>8</sub>	1 <sup>1</sup> / <sub>16</sub>	5 <sup>1</sup> / <sub>32</sub>	300 lbs.
	56KX/N						400 lbs.
301	56AX/S	5 <sup>5</sup> / <sub>8</sub>	5 <sup>1</sup> / <sub>16</sub>	1 <sup>11</sup> / <sub>16</sub>	2 <sup>1</sup> / <sub>32</sub>	5 <sup>5</sup> / <sub>8</sub>	600 lbs.
	56AX/N						800 lbs.
301H	56AX/S	5 <sup>5</sup> / <sub>8</sub>	5 <sup>1</sup> / <sub>16</sub>	1 <sup>11</sup> / <sub>16</sub>	2 <sup>1</sup> / <sub>32</sub>	5 <sup>5</sup> / <sub>8</sub>	800 lbs.
	56AX/N						1000 lbs.
305	56CX/S	6 <sup>3</sup> / <sub>8</sub>	5 <sup>1</sup> / <sub>16</sub>	1 <sup>11</sup> / <sub>16</sub>	3	5 <sup>5</sup> / <sub>8</sub>	1500 lbs.
307	56FX/S	8 <sup>7</sup> / <sub>16</sub>	5 <sup>1</sup> / <sub>2</sub>	2 <sup>1</sup> / <sub>4</sub>	3 <sup>7</sup> / <sub>16</sub>	5 <sup>1</sup> / <sub>16</sub>	2500 lbs.
	56FJX/S						4400 lbs.

## No. 57 WOOD DOORS



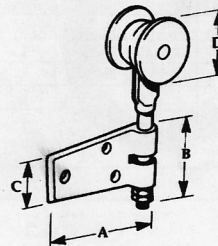
Track no.	Hanger no.	Dimensions					Door Weight Capacity
		A	C	D	E	F	
290	57K/N	3 <sup>7</sup> / <sub>16</sub>	1	5 <sup>1</sup> / <sub>2</sub>	1 <sup>1</sup> / <sub>16</sub>	1	300 lbs.
301	57A/S	5 <sup>5</sup> / <sub>8</sub>	2 <sup>3</sup> / <sub>8</sub>	7 <sup>5</sup> / <sub>16</sub>	1 <sup>1</sup> / <sub>16</sub>	1 <sup>1</sup> / <sub>2</sub>	600 lbs.
301H	57A/N	5 <sup>5</sup> / <sub>8</sub>	2 <sup>3</sup> / <sub>8</sub>	7 <sup>5</sup> / <sub>16</sub>	1 <sup>1</sup> / <sub>16</sub>	1 <sup>1</sup> / <sub>2</sub>	1000 lbs.
305	57C/S	6 <sup>3</sup> / <sub>8</sub>	2 <sup>1</sup> / <sub>2</sub>	7 <sup>5</sup> / <sub>16</sub>	1 <sup>1</sup> / <sub>16</sub>	1 <sup>1</sup> / <sub>2</sub>	1500 lbs.

## No. 52 WOOD DOORS



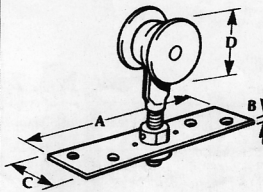
Track no.	Hanger no.	Dimensions						Door Weight Capacity
		A	C	D1	D2	E	F	
290	52K/S	3 <sup>7</sup> / <sub>16</sub>	1	3	2	5 <sup>1</sup> / <sub>4</sub>	1	300 lbs.
	52K/N							300 lbs.
301	52A/S	5 <sup>5</sup> / <sub>8</sub>	2 <sup>3</sup> / <sub>8</sub>	4	5	6 <sup>1</sup> / <sub>2</sub>	1 <sup>1</sup> / <sub>2</sub>	600 lbs.
301H	52A/N	5 <sup>5</sup> / <sub>8</sub>	2 <sup>3</sup> / <sub>8</sub>	4	5	6 <sup>1</sup> / <sub>2</sub>	1 <sup>1</sup> / <sub>2</sub>	1000 lbs.
305	52C/S	6 <sup>3</sup> / <sub>8</sub>	2 <sup>1</sup> / <sub>2</sub>	4		6 <sup>1</sup> / <sub>2</sub>	1 <sup>1</sup> / <sub>2</sub>	1500 lbs.

## No. 63 FOLDING DOORS



Track no.	Hanger no.	Dimensions			
		A	B	C	D
290	63K	4	2 <sup>1</sup> / <sub>4</sub>	1 <sup>1</sup> / <sub>16</sub>	1 <sup>1</sup> / <sub>16</sub>
301	63A	4	2 <sup>1</sup> / <sub>4</sub>	1 <sup>1</sup> / <sub>16</sub>	2 <sup>1</sup> / <sub>32</sub>
305	63C	8 <sup>7</sup> / <sub>16</sub>	3 <sup>3</sup> / <sub>4</sub>	2	3

## No. 61 FOLDING DOORS



Track no.	Hanger no.	Dimensions			
		A	B	C	D
290	61K/S	5 <sup>1</sup> / <sub>2</sub>	3 <sup>1</sup> / <sub>16</sub>	1	1 <sup>1</sup> / <sub>16</sub>
301	61A/S	7 <sup>1</sup> / <sub>4</sub>	1 <sup>1</sup> / <sub>4</sub>	1 <sup>1</sup> / <sub>2</sub>	2 <sup>1</sup> / <sub>32</sub>
305	61C/S	7 <sup>1</sup> / <sub>4</sub>	1 <sup>1</sup> / <sub>4</sub>	1 <sup>1</sup> / <sub>2</sub>	3