



## **i n d u s t r i a l s l i d i n g g e a r**

**Henderson industrial gear is for individual door weights of up to 8 tonnes and encompasses doors up to 20 metres in height.**

**Over 70 years expertise at the forefront of sliding gear production has resulted in excellent product design, combining trouble-free installation and use with the versatility to meet almost any door and non-door sliding application.**

**Henderson industrial gear is suitable for interior and exterior applications, in both commercial and heavy industrial applications.**

**Commercial door applications typically include shops, restaurants, schools, garages, churches, offices and other applications where an aesthetically pleasing installation is required. Gear is also available for shop fronts and patios using aluminium framed glazed panels.**

**Industrial door applications include factories and warehouses where functionality and ability to withstand wear and tear is of higher priority than aesthetics. A wide range of door weights and heights can be accommodated.**

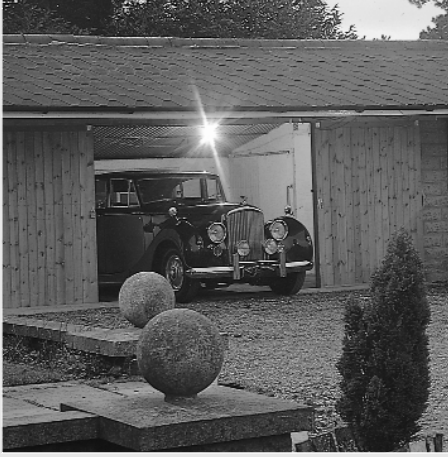
**Agricultural applications include farm doors, barns and gates.**

**Non-door applications include overhead systems - transporting objects on overhead track, industrial curtains, theatre scenery and climbing rope gear.**

**Replacement Parts for repair and refurbishment are available through Henderson.**



H  
E  
N  
D  
E  
R  
S  
O  
N



Top-Hung design keeps load bearing components away from possible dirt and damage, ensuring smooth operation and long term reliability.

Adjustable hangers permit precise fitting of door.

Galvanised or zinc plated inverted U section track prevents corrosion and ensures free running of the hanger.

Supporting open bracket along with closed end brackets and jointing brackets prevent any movement of the track.

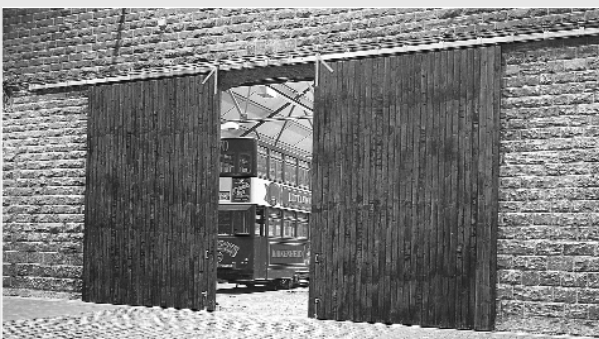
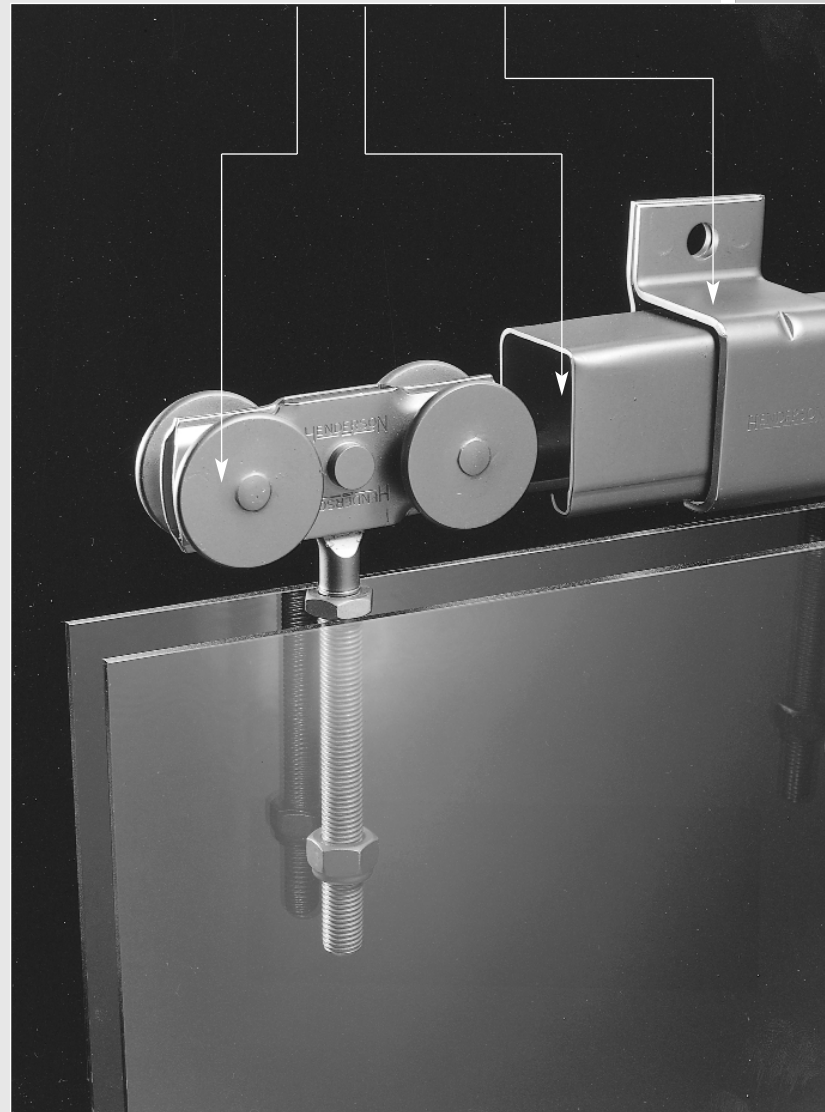
**design options** Industrial gear gives three main design options for doors with the additional option of doors being top hung or on bottom rollers.

Design options include:

- ▶ Straight Sliding - requiring wall space where the door can park.
- ▶ Round-the-Corner - utilising a second wall area usually at 90° to the opening.
- ▶ Internal Folding and External Folding - where wall space is short, stacking can be at the end(s) or in the centre.



Top hung doors are recommended wherever possible, providing the building structure is capable of carrying the weight of the doors and each door does not weigh more than 2000kg. This gives maximum stability and keeps load bearing components away from possible dirt and damage. Where there are structural limitations or each door weighs more than 2000kg, the bottom roller design is used.



# THE EXPERT SERVICE

If you have a project where you would like to use sliding or folding door hardware use the **FREE Henderson Expert Service** to supply your bill of materials, quantities, prices and drawings.

Simply contact the Henderson Technical Sales Department using any of the following:

-  **Tel:** +44 (0) 191 377 0701
-  **Fax:** +44 (0) 191 377 3116
-  **Website:** [www.pchenderson.com](http://www.pchenderson.com)
-  **e-mail:** [sales@pchenderson.com](mailto:sales@pchenderson.com)
-  **Post:** Henderson Technical Sales Dept.,  
Durham Road, Bowburn,  
Co. Durham, DH6 5NG  
England

Based on the answers you give to a series of questions (opening size, door size and weight etc.) we will specify the gear you require and you will receive a **quotation** from Henderson giving you a bill of materials and a list of the correct gear

- ▶ quantity
- ▶ price
- ▶ drawing
- ▶ fixing instructions

If you wish to make **changes** to your original specification, just contact us, we will find your original quotation, make the amendments and issue you with a revised quotation.



**It couldn't be simpler. Leave it to the experts!**

# STRAIGHT SLIDING 280-307

FOR SLIDING  
WOOD DOORS

For top-hung, straight sliding wood doors for commercial and industrial applications; glazed or flush construction or, for industrial use, solidly framed, ledged and braced. Nine systems are available for leaf weights up to 2000kg.

Maximum door width and no. required depends on height, and the weight of door material (eg a softwood door with 50-60mm frame and 20mm boarding weighs c. 22-24 kg/m<sup>2</sup>). For optimum operation, the width should not exceed  $\frac{3}{4}$  the door height.

## COMPONENTS

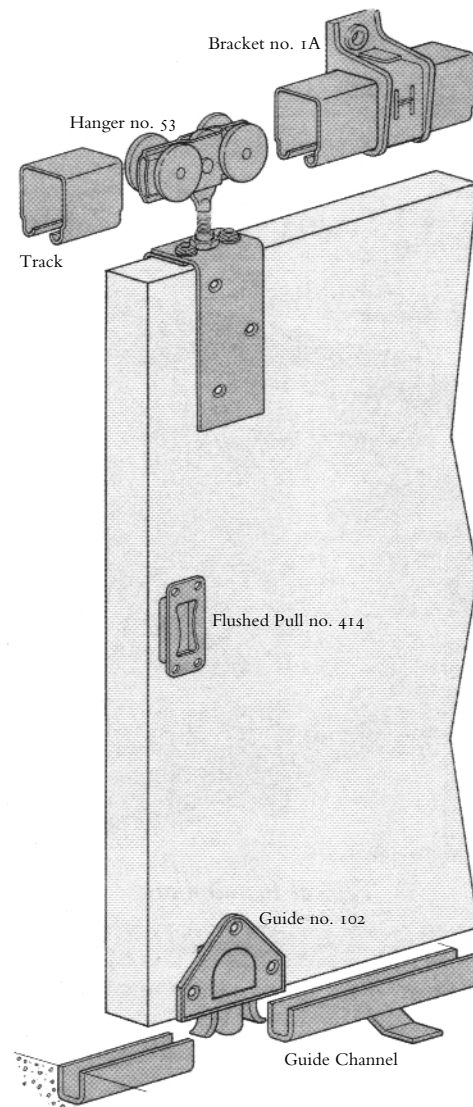
Components supplied include: support and jointing brackets; track; hangers; bottom channel; guides; full range of accessories. Consult PC Henderson Technical Department or 'Expert' Service for guidance on quantities.

## INSTALLATION NOTES

(also see drawing)

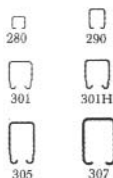
The gear is suitable for single or multiple lines of track where the supporting structure is sufficient to bear the total door weight. Sterling bottom roller gear (see p30-33) may be specified where support is insufficient. Any number of doors sliding to one or both sides may be specified. A wicket door may be incorporated for individual access requirements. A canopy (not by PC Henderson) is recommended for external fitting of the doors.

Typical installation detail drawings are also available from the Technical Department PC Henderson.



## CHOICE OF GEARS

### TRACKS



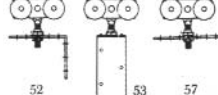
### BRACKETS - FACE FIXED



### BRACKETS - SOFFIT FIXED



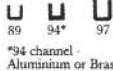
### HANGERS



### GUIDES

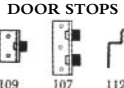


### GUIDE CHANNELS



\*94 channel - Aluminium or Brass

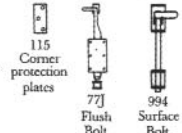
### DOOR STOPS



### HANDLES



### BOLTS



# STRAIGHT SLIDING 280-307

## HOW TO CHOOSE YOUR DOOR GEAR

280-307 Wood Door System No.	280	280	290	290	301	301	301H	305	307
<b>Maximum Door Height</b>	2400mm	2400mm	3000mm	3000mm	3600mm	3600mm	4200mm	4800mm	6000mm
<b>Maximum Door Width</b>	1250mm	1250mm	**	**	**	**	**	**	**
<b>Maximum Door Weight</b>	50kg	100kg	150kg	200kg	300kg	400kg	450kg	700kg	2000kg
<b>Door Thickness</b>	20-50mm	20-50mm	35-48mm	35-48mm	43-57mm	43-57mm	43-57mm	43-57mm	60-70mm
<b>Track</b> Twice the width of doors Available lengths: 1.8, 2, 2.5, 3, 4 & 6m	280	280	290	290	301	301	301H	305	307*
<b>Brackets</b> , single run (face fixing)	281†	281††	1A/290	1A/290	1A/301	1A/301	1A/301	1A/305	1/307/S
<b>Brackets</b> , double run, (face-fixing)			5/290	5/290	5/301	5/301	5/301	5/305	5/307/S
<b>Brackets</b> , single run (soffit fixing) fix every 900mm max and at track joints			3A/290	3A/290	3A/301	3A/301	3A/301	3A/305	3/307/S
<b>Hangers</b> 2 per door Wood Doors - apron fixing			53K/N	53K/S200	53A/S	53A/N	53A/N	53C/S	53FJ/S
Wood Door - angle plate fixing			52K/N	52K/S200	52A/S	52A/N	52A/N	52C/S	
Wood Doors - concealed fixing	284N	284	57K/N	57K/S200	57A/S	57A/N	57A/N	57C/S	
All Hangers with suffix/N have nylon wheels, and /S have steel wheels.									
<b>Guide Channel</b> same length as track	89	89	89	89	97	97	97	97	97
<b>Guides</b> 2 per door Wood Doors	105R/89	105R/89	105R/89	105R/89	102/97	102/97	102/97	102/97	102/97
Wood Doors - concealed fixing	106R/94	106R/94	106R/94	106R/94	106R/97	106R/97	106R/97	106R/97	106R/97
<b>Flush Pull</b> 1 per door	414	414	414	414	414	414	414	414	413
<b>Bow Handle</b> 1 per door (use flush pulls only on double runs of track)	863	863	863	863	463	463	463	463	464

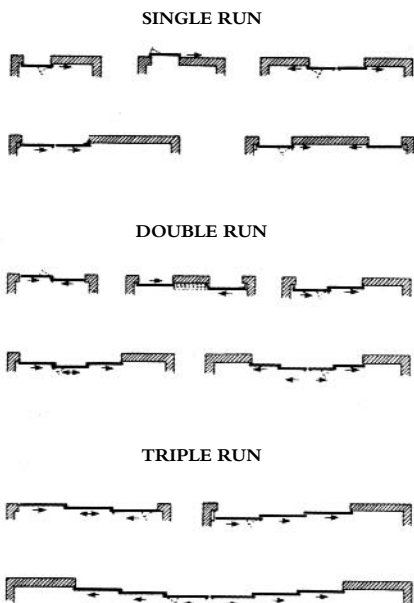
Nylon wheeled hangers (eg 53A/N) - Not to be used for fire resistant door installations involving temperatures exceeding 80°C.

† Fix brackets every 550mm max. †† Fix brackets every 275mm max.

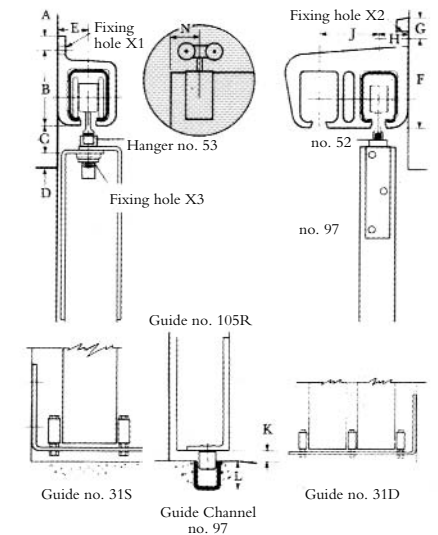
\* Max. length 3m. \*\* For optimum operation the door width should not exceed 3/4 of the door height.

\*\* For optimum operation the door width should not exceed 3/4 of the door height.

### EXAMPLE PLAN DETAILS



### SECTION DETAILS



TRACK	A	B	C	D	E	F	G	H	J	K	L	X1	X2	X3	N
280	7	40	20	12	16					10	25	M5			125
290	13	67	25	13	27	80	20	27	54	10	25	M8	M12	11	48
301/301H	20	97	50	25	35	110	33	39	79	10	38	M12	M16	20	75
305	25	140	50	25	38	155	38	48	92	13	38	M16	M20	20	85
307	24	156	67	38	45	192	26	45	91	13	38	M16	M20	25	115

PC Henderson provide a full technical support service.

All dimensions in mm

# STRAIGHT SLIDING 280-307

FOR SLIDING  
METAL DOORS

For top-hung, straight sliding metal doors for commercial and industrial applications; normally framed and braced with steel angle and then clad with steel sheet or similar. Where steel box section is used, hangers no. 56X and guides no. 104PX should be specified; for fire doors, hangers no. 56AF/S or 56CF/S should be used - please consult PC Henderson Technical Department. Nine systems are available for door weights up to 2000kg.

## COMPONENTS

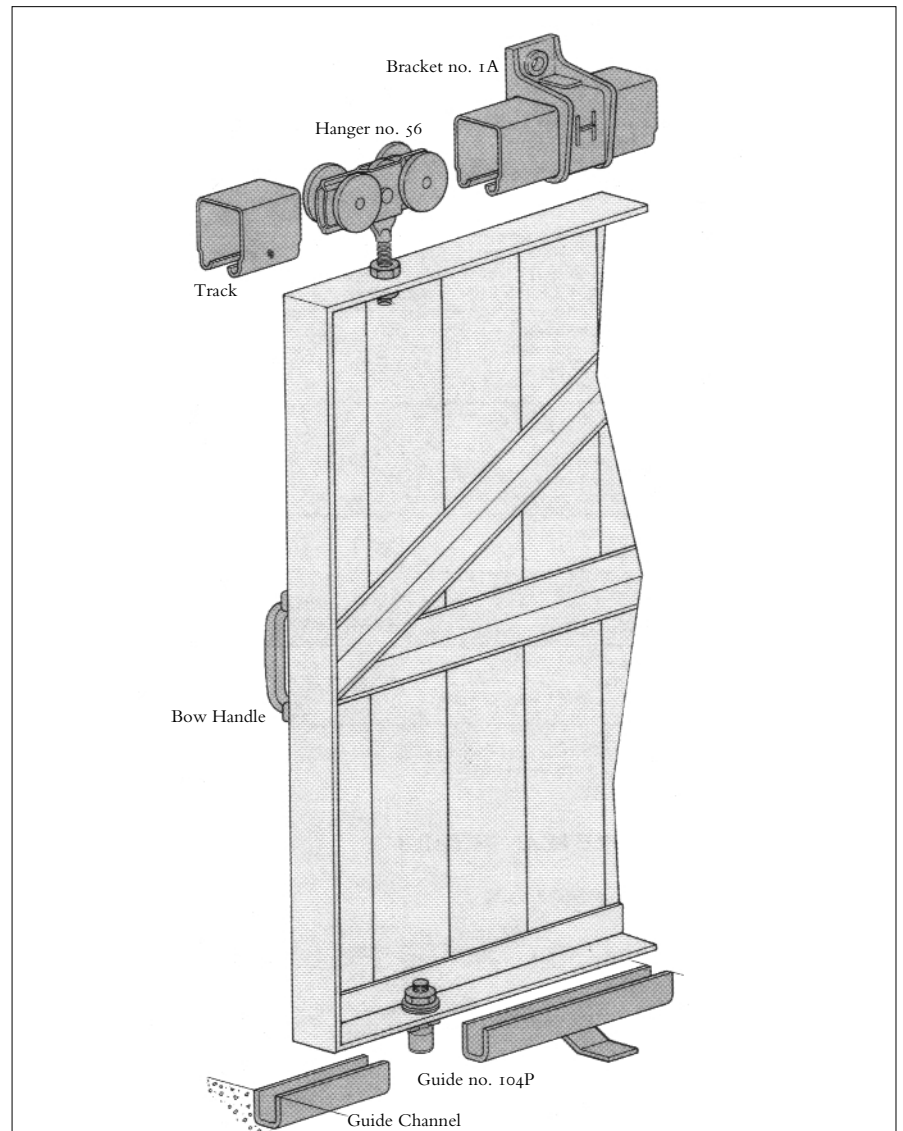
Components supplied include: support and jointing brackets; track; hangers; bottom channel; guides; full range of accessories. Consult PC Henderson Technical Department or 'Expert' Service for guidance on quantities. For optimum operation, the door width should not exceed  $\frac{3}{4}$  of the door height.

## INSTALLATION NOTES

(also see drawing)

The gear is suitable for single or multiple lines of track where the supporting structure is sufficient to bear the total door weight. Sterling bottom roller gear (see p30-33) may be specified where support is insufficient. Any number of doors sliding to one or both sides may be specified. A wicket door may be incorporated for individual access requirements. A canopy (not by Henderson) is recommended for external fitting of the doors.

Typical installation detail drawings are also available from the Technical Department, PC Henderson.



## CHOICE OF GEARS

### TRACKS



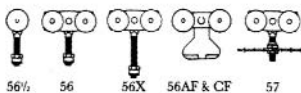
### BRACKETS - FACE FIXED



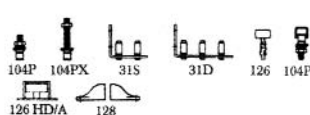
### BRACKETS - SOFFIT FIXED



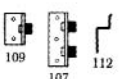
### HANGERS



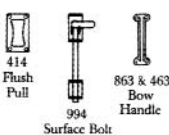
### GUIDES



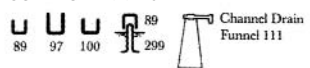
### DOOR STOPS



### ACCESSORIES



### GUIDE CHANNELS



# STRAIGHT SLIDING 280-307

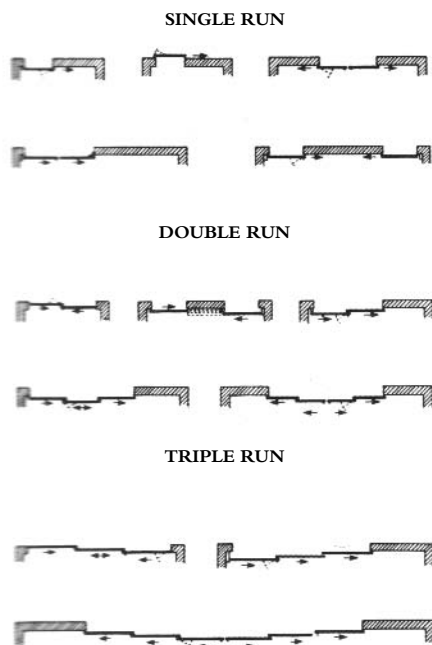
## HOW TO CHOOSE YOUR DOOR GEAR

Read across to required doorleaf height, then read downwards.

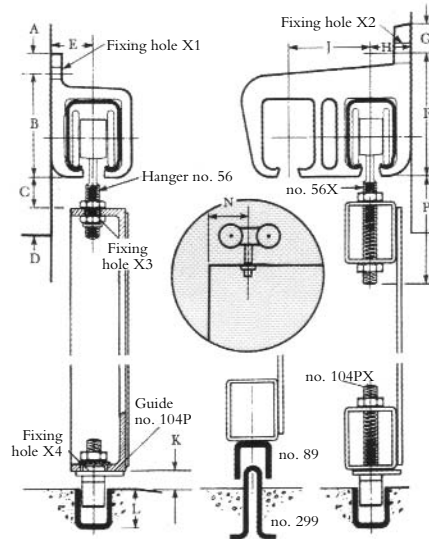
280-307 Metal Door System No.	280	280	290	290	301	301	301H	305	307
<b>Maximum Door Height</b>	2400mm	2400mm	3000mm	3000mm	3600mm	3600mm	4200mm	4800mm	6000mm
<b>Maximum Door Width</b>	1250mm	1250mm	****	****	****	****	****	****	****
<b>Maximum Door Weight</b>	50kg	100kg	150kg	200kg	300kg	400kg	450kg	700kg	2000kg
<b>Door Thickness</b>	20-50mm	20-50mm	35-48mm	35-48mm	43-57mm	43-57mm	43-57mm	43-57mm	60-70mm
<b>Track</b> Twice the width of doors (more if the doors slide further) Available lengths: 1.8, 2, 2.5, 3, 4 & 6m	280*	280*	290*	290*	301	301*	301H*	305	307***
<b>Brackets</b> , single run (face fixing)	281†	281††	1A/290	1A/290	1A/301	1A/301	1A/301	1A/305	1/307/S
<b>Brackets</b> , double run, (face-fixing)			5/290	5/290	5/301	5/301	5/301	5/305	5/307/S
<b>Brackets</b> , single run (soffit fixing) fix every 900mm max and at track joints			3A/290	3A/290	3A/301	3A/301	3A/301	3A/305	3/307/S
<b>Hangers</b> 2 per door Metal Doors - angle frame	285N	285	56K/S	56K/S200	56A/S	56A/N	56A/N	56C/S	56FJ/S
Metal Door - box frame			56KX/S		56A/X	56AX/N	56AX/N	56CX/S	56FJ/S
Metal Doors - concealed plate	284N	284	57K/N	57K/S200	57A/S	57A/N	57A/N	57C/S	
Metal Doors - fire doors All Hangers with suffix/N have nylon wheels, and /S have steel wheels.					56AF/S		56AF/S**	56CF/S	
<b>Guide Channel</b> same length as track	89	89	89	89	97	97	97	97	97
<b>Guides</b> 2 per door Metal Doors - angle frame	104P/89	104P/89	104P/89	104P/89	104P/97	104P/97	104P/97	104P/97	104P/97
Metal Doors - box frame	104PX/89	104PX/89	104PX/89	104PX/89	104PX/97	104PX/97	104PX/97	104PX/97	104PX/97

\*Nylon wheeled hangers (eg 56A/N) - Not to be used for fire resistant door installations involving temperatures exceeding 80°C.  
 \*\* If used with 301H track give max. capacity of 360kg. † Fix brackets every 550mm max. †† Fix brackets every 275mm max.  
 \*\*\* Max. length 3m. \*\* For optimum operation the door width should not exceed 3/4 of the door height.  
 \*\*\*\* For optimum operation the door width should not exceed 3/4 of the door height.

### EXAMPLE PLAN DETAILS



### SECTION DETAILS



TRACK	A	B	C	D	E	F	G	H	J	K	L	X1	X2	X3	X4	N	P
280	7	40	20	13	16							10	25	M5	8.4	17	50
290	13	67	25	13	27	80	20	27	54	10	25	M8	M12	M16	10.5	17	48 110
301/301H	20	97	50	25	35	110	33	39	79	10	38	M12	M16	17	20	75	140
305	25	140	50	25	38	155	38	48	92	13	38	M16	M20	17	20	85	140
307	24	156	67	38	45	192	26	45	91	13	38	M16	M20	21	20	115	140

All dimensions in mm

High quality bottom roller gear and fittings to match the best sliding partitions and glazed, flush or panelled doors. Three systems available for leaf weights up to 270kg. Maximum leaf width and number required depends on height and weight of leaf material.

### COMPONENTS

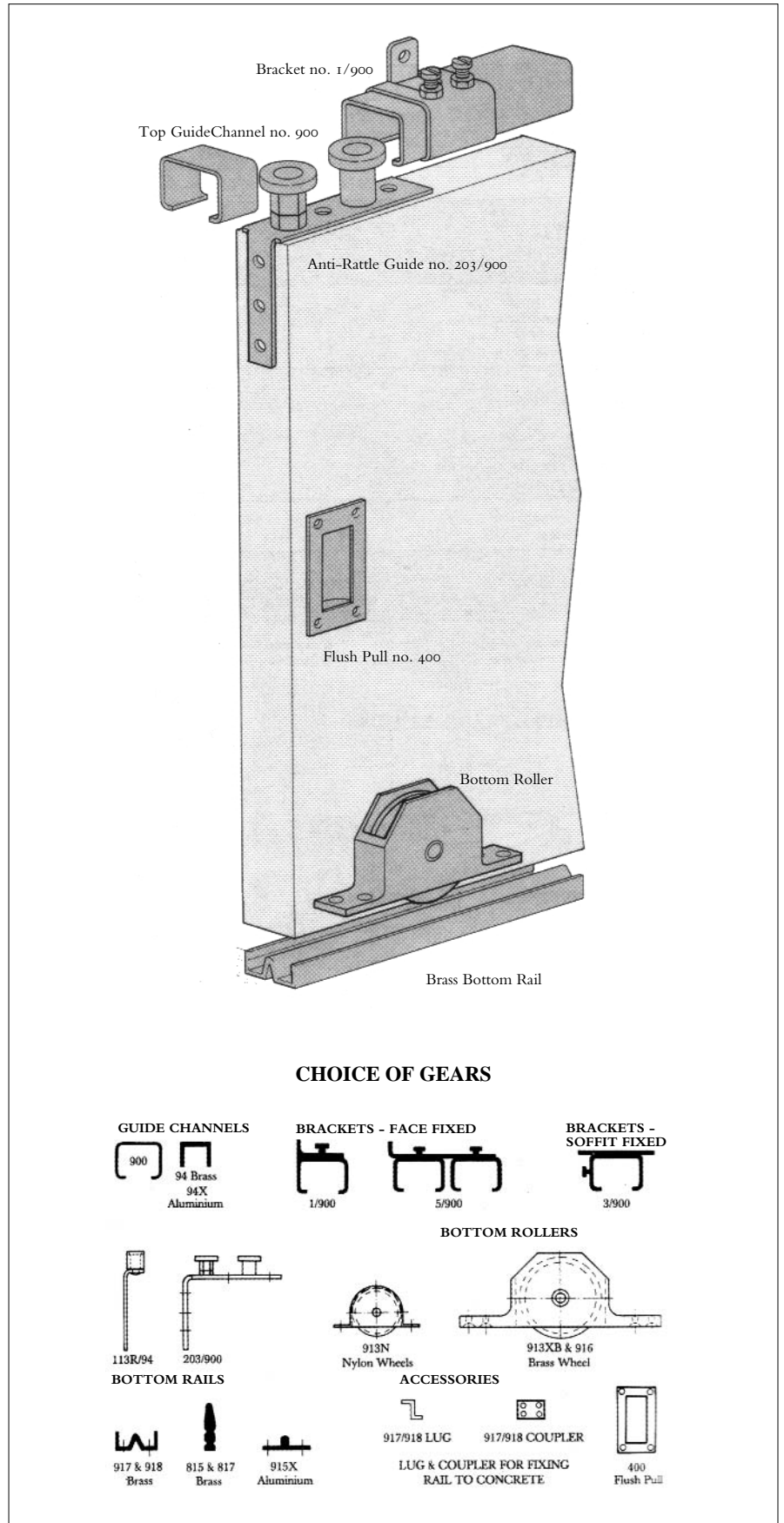
Components supplied include: top guide channel; optional top guide brackets; bottom rollers; bottom rail; full range of accessories. Consult PC Henderson Technical Department or 'Expert' Service for guidance on quantities.

### INSTALLATION NOTES

(also see drawing)

Door leaves must be constructed with deep bottom section for the concealed, mortised bottom rollers (minimum depth 150mm for 913N/913XB rollers or 175mm for 916 rollers).

Typical installation detail drawings are also available from the Technical Department, PC Henderson.





## HOW TO CHOOSE YOUR DOOR GEAR

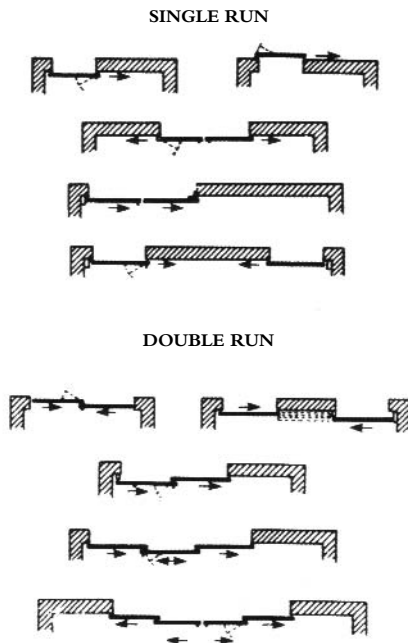
Read across to required doorleaf height, then read downwards.

Mansion/Majestic System No.	Mansion 55	Mansion 170	Majestic
<b>Maximum Door Height</b>	2600mm	2600mm	3300mm
<b>Maximum Door Weight</b>	55kg	170kg	270kg
<b>Door Thickness</b>	30-57mm	30-57mm	44-57mm
<b>Top Guide Channel</b> Twice the width of doors Available lengths: 1.8, 2, 2.5 & 3m (More if doors slide further)	94*Brass 94X Aluminium	900	900
<b>Brackets</b> , single run (soffit fixing)		3/900	3/900
<b>Brackets</b> , single run (face fixing)		1/900	1/900
<b>Brackets</b> , double run (face fixing) Fix every 900mm max and at channel joints		5/900	5/900
<b>Guides</b> - 2 per door	113R/94	203/900	203/900
<b>Bottom Rollers</b> - brass wheel - nylon wheel	913N	913XB	916
<b>Bottom Rail</b> - brass - brass recessed - aluminium same length as guide channel (lengths 1.5 & 3m)	aluminium 915X**	918 815	917 817
<b>Flush Pull</b> 2 per door	400	400	400

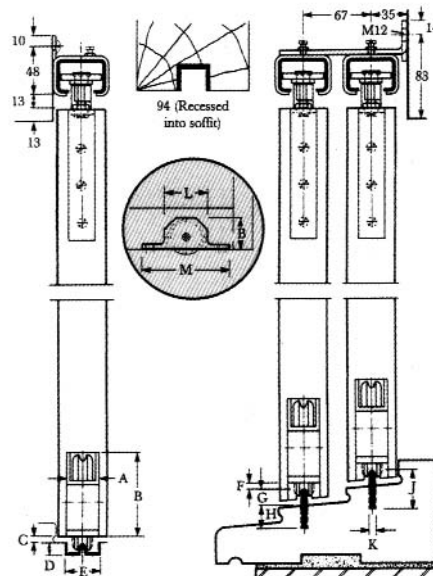
\* Available in 1.5 & 3m lengths, drilled for soffit fixing.

\*\* Available in 1.5, 2, 2.5 & 3m lengths.

### EXAMPLE PLAN DETAILS



### SECTION DETAILS



SYSTEM	A	B	C	D	E	F	G	H	J	K	L	M
MANSION 55	16	37	5	6	21	5	16	16	32	6	48	74
MANSION 170	22	48	5	10	25	5	16	16	32	6	63	117
MAJESTIC	32	82	6	13	35	6	16	22	38	8	111	229

PC Henderson provide a full technical support service.

For bottom rolling wood doors in a range of commercial and industrial applications, especially where the supporting structure or lintel is insufficient for the weight of the door or headroom is limited. The doors may be partially or fully glazed, or should be framed, ledged and braced for industrial applications. Four systems are available up to 2000kg per door.

Maximum door width and number of doors required depends on height, and the weight of door material (e.g. a soft-wood door with 50-60mm frame and 20mm boarding weighs c. 22-24 kg/m<sup>2</sup>). For optimum operation, the door width should not be less than 1/2 the door height.

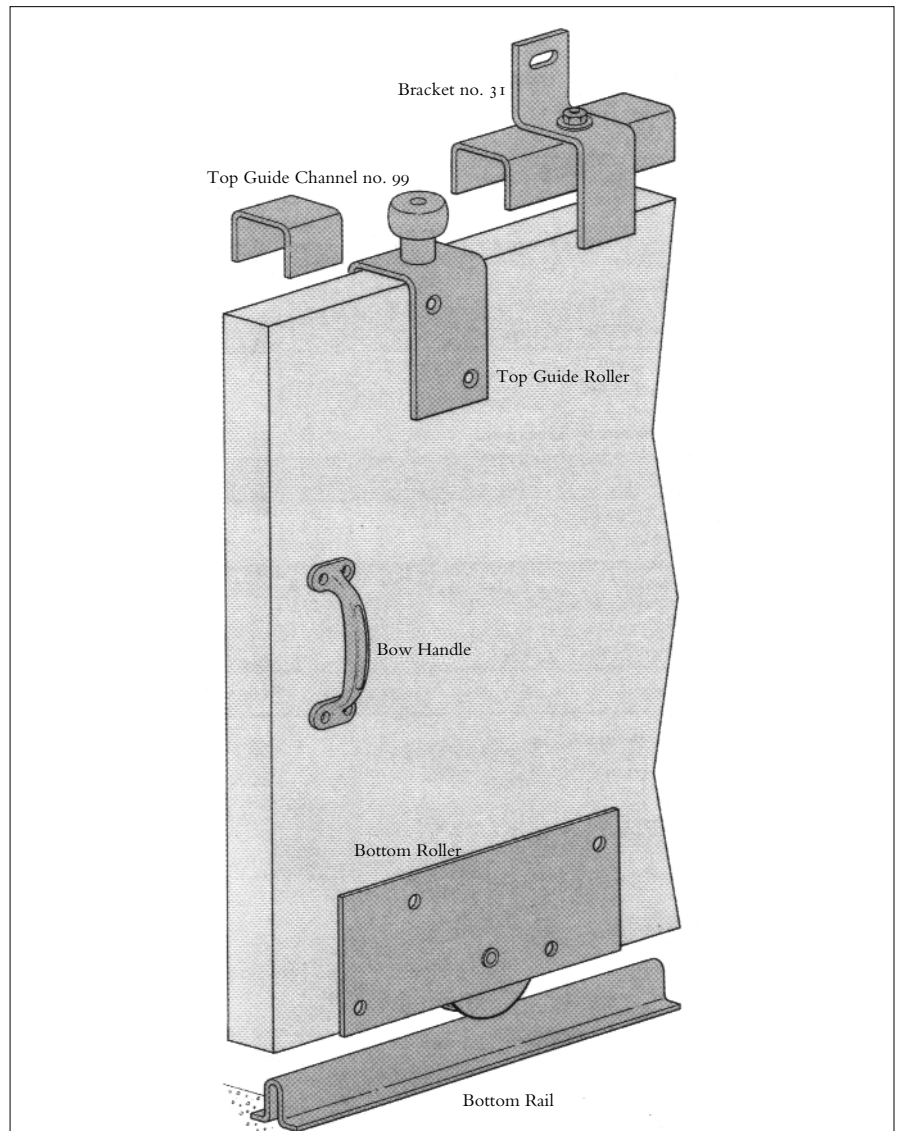
### COMPONENTS

Components supplied include: top guide channel; brackets; top guide rollers; bottom rollers; bottom rail; full range of accessories. Consult PC Henderson Technical Department or 'Expert' Service for guidance on quantities.

### INSTALLATION NOTES

(also see drawing)

The gear is suitable for single or multiple lines of track. Rollers should be positioned in the bottom door leaf section, clear of the joint with the stile. Suitable depth of bottom leaf sections are: 230mm for bottom rollers no.s 2 & 5; 300mm for no. 3; no. 4 made to order to suit door thickness between 70-100mm as specified. Any number of doors sliding to one or both sides may be specified. A canopy (not by PC Henderson) is recommended for external fitting of the doors.



### CHOICE OF GEARS

#### GUIDE CHANNELS



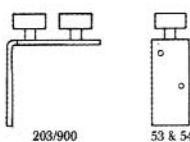
#### BRACKETS - FACE FIXED



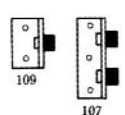
#### BRACKETS - SOFFIT FIXED



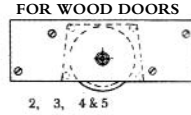
#### GUIDES FOR WOOD DOORS



#### DOOR STOPS



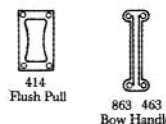
#### BOTTOM ROLLERS FOR WOOD DOORS



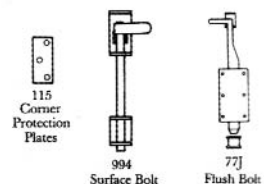
#### BOTTOM RAILS



#### HANDLES



#### BOLTS

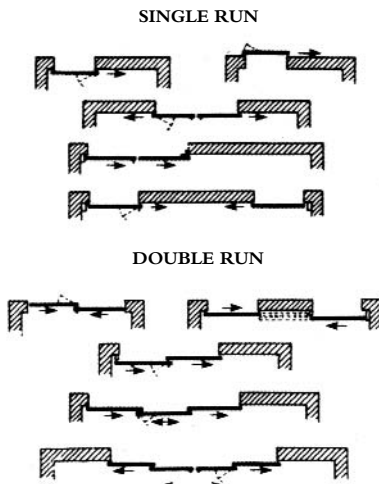


## HOW TO CHOOSE YOUR DOOR GEAR

Read across to required doorleaf height, then read downwards.

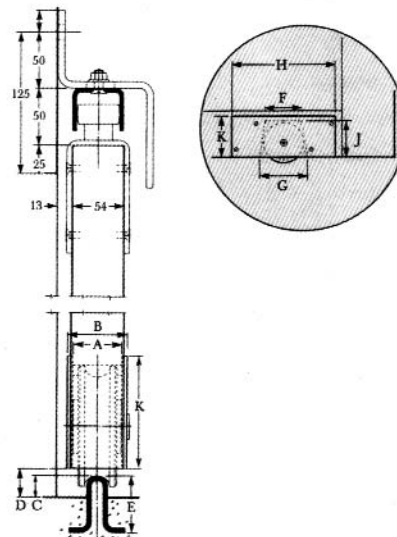
<b>Sterling Wood Door System No.</b>	<b>225</b>	<b>350</b>	<b>800</b>	<b>2000</b>
<b>Maximum Door Height</b>	3300mm	4000mm	5200mm	7500mm
<b>Maximum Door Weight</b>	225kg	350kg	800kg	2000kg
<b>Door Thickness</b>	44-50mm	44-54mm	54-63mm	See Text
<b>Top Guide Channel</b> Twice the width of doors (More if doors slide further) Available lengths: 2, 2.5 & 3m	900	99	99	13
<b>Brackets, single run (face fixing)</b>	1/900	31	31	1/13
<b>Brackets, double run (face fixing)</b> Fix every 900mm max and at channel joints	5/900	35	35	5/13
<b>Guides - 2 per door</b>	54/900	53/99	53/99	53/13
<b>Bottom Rollers 2 per door</b>	5	2	3	4
<b>Bottom Rail (same length as guide channel)</b>	299	298	298	298
<b>Flush Pull 1 per door (used on double runs of track)</b>	414	414	414	413
<b>Bow Handle 1 per door (used on single doors)</b>	463	463	463	464

### EXAMPLE PLAN DETAILS



### SECTION DETAILS

(NB: The top section of the door illustrated is only Sterling 350 & 800.  
For Sterling 225 see MANSION)



TRACK	A	B	C	D	E	F	G	H	J	K
225	44	50	16	24	50	65	102	159	67	75
350	44	54	20	25	50	115	135	305	95	102
800	51	63	20	30	50	135	175	381	130	152

PC Henderson provide a full technical support service.

### STRAIGHT SLIDING BOTTOM ROLLER

For bottom rolling metal doors and gates in a range of commercial and industrial applications, especially where the supporting structure or lintel is insufficient for the weight of the door or headroom is limited. The doors should be framed and braced using steel angle, then clad with steel sheet; for Sterling 3600 and 8000 gear the door should be constructed from steel channel section. Six systems are available up to 8000kg per door.

Maximum door width and no. required depends on height, and the weight of door material. For optimum operation, the door width should not be less than 1/2 the door height. Gear also suitable for power operation (power operation not by PC Henderson - consult Technical Department).

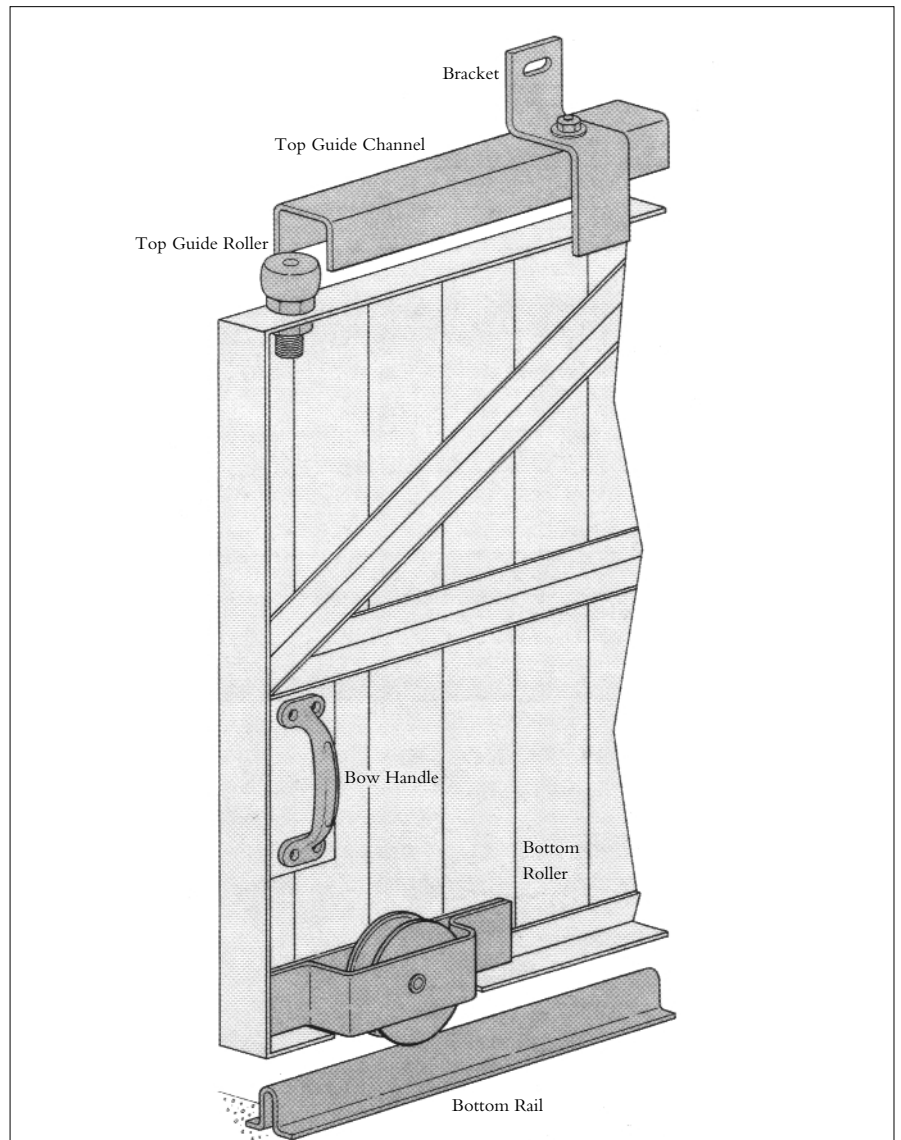
#### COMPONENTS

Components supplied include: top guide channel; brackets; top guide rollers; bottom rollers; bottom rail; full range of accessories. (All steel parts are galvanised.) Consult PC Henderson Technical Department or 'Expert' Service for guidance on quantities.

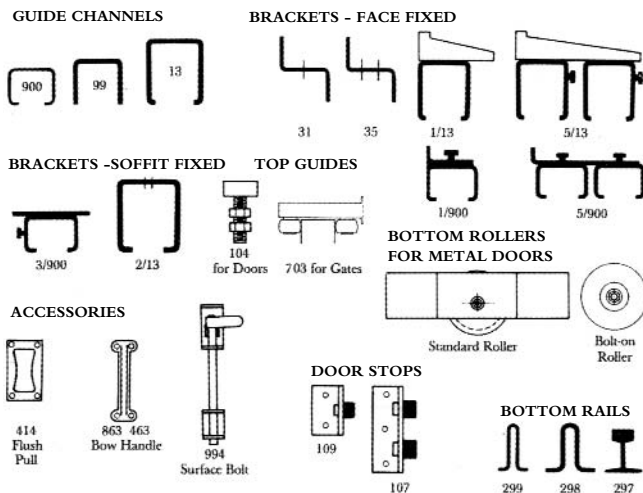
#### INSTALLATION NOTES

(also see drawing)

The gear is suitable for single or multiple lines of track. Rollers should be positioned securely in the bottom door frame section by welding or bolting. Bottom rail must be set level and may be recessed for protection from traffic. Any number of doors sliding to one or both sides may be specified. A wicket door may be incorporated for individual access requirements. A canopy (not by PC Henderson) is recommended for external fitting of the doors.



#### CHOICE OF GEARS



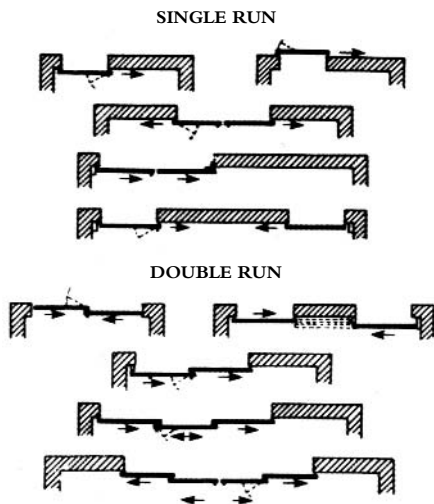
## HOW TO CHOOSE YOUR DOOR GEAR

Read across to required doorleaf height, then read downwards.

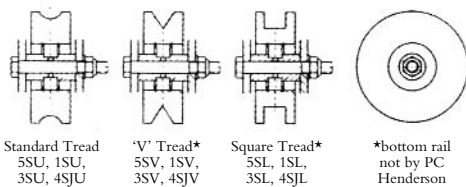
Sterling Metal Door System No.	225	350	800	2000	3600	8000
Maximum Door Height	3300mm	4000mm	5200mm	7500mm	12500mm	20000mm
Maximum Door Weight	225kg	350kg	800kg	2000kg	3600kg	8000kg
Door Thickness	44-50mm	44-54mm	54-63mm	58-70mm	152min	152min
Top Guide Channel Twice the width of doors (More if doors slide further) Available lengths: 2, 2.5 & 3m	900	99	99	13	Not by PCH	
Brackets, single run (face fixing)	1/900	31	31	1/13	Not by PCH	
Brackets, double run (face fixing) Fix every 900mm max and at channel joints	5/900	35	35	5/13	Not by PCH	
Guides - 2 per door	104/900	104/99	104/99	104/13	104S*	104S*
Bottom Rollers 2 per door - standard	5S	1S	3S	4SJ	3600**	8000**
Bottom Rollers 2 per door - Bolt on rollers also available in 'V' square or 'U' tread, see below	5SU	1SU	3SU	4SJU		
Bottom Rail (same length as guide channel)	299	298	298	298	297***	297***
Bow Handle 1 per door (used on single doors)	463	463	463	464	464	464

\* Fit 4 per door, available in choice of 125, 175 & 200mm diameters. \*\* Made to suit door. Chain driven geared rollers available. \*\*\* Only Available in 2.7m lengths (plain steel).

### EXAMPLE PLAN DETAILS



### BOLT ON OPTION



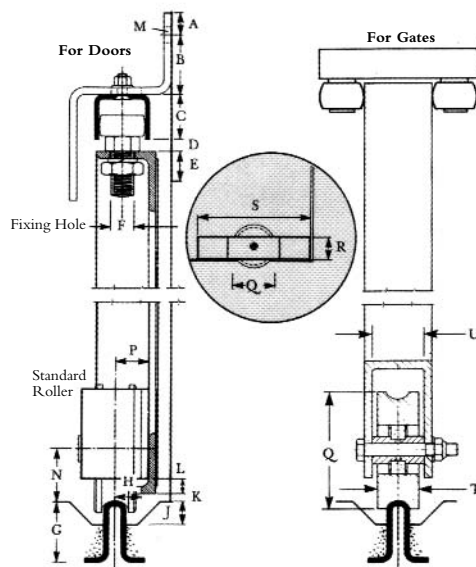
Standard Tread  
5SU, 1SU,  
3SU, 4SJU

'V' Tread\*  
5SV, 1SV,  
3SV, 4SJV

Square Tread\*  
5SL, 1SL,  
3SL, 4SJL

\*bottom rail  
not by PC  
Henderson

### SECTION DETAILS



TRACK	A	B	C	D	E	F	G	H	J	K	L	M	N	P	Q	R	S	T	U
225	10	10	38	20	25	17	50	14	16	3	11	12	30	19	75	50	229	25	35
350	20	50	38	10	25	21	50	22	20	6	13	12	44	29	110	75	305	40	50
800	20	50	38	10	25	21	50	22	20	6	13	12	62	32	146	75	381	40	50
2000	32	35	85	25	30	26	50	25	20	10	12	16	85	32	197	102	457	45	56
3600															286		105	128	
8000															436		105	128	

PC Henderson provide a full technical support service.

# TANGENT ROUND THE CORNER

FOR ROUND-THE-CORNER FOLDING WOOD OR METAL DOORS

ROUND - THE - CORNER

Robust top-hung door gear for round-the-corner domestic, commercial or light industrial, wood or metal folding doors; deluxe fittings are also available in polished or satin anodised aluminium finishes. Doors may be panelled, flush or glazed. Four systems are available to suit leaf weights up to 80kg.

## COMPONENTS

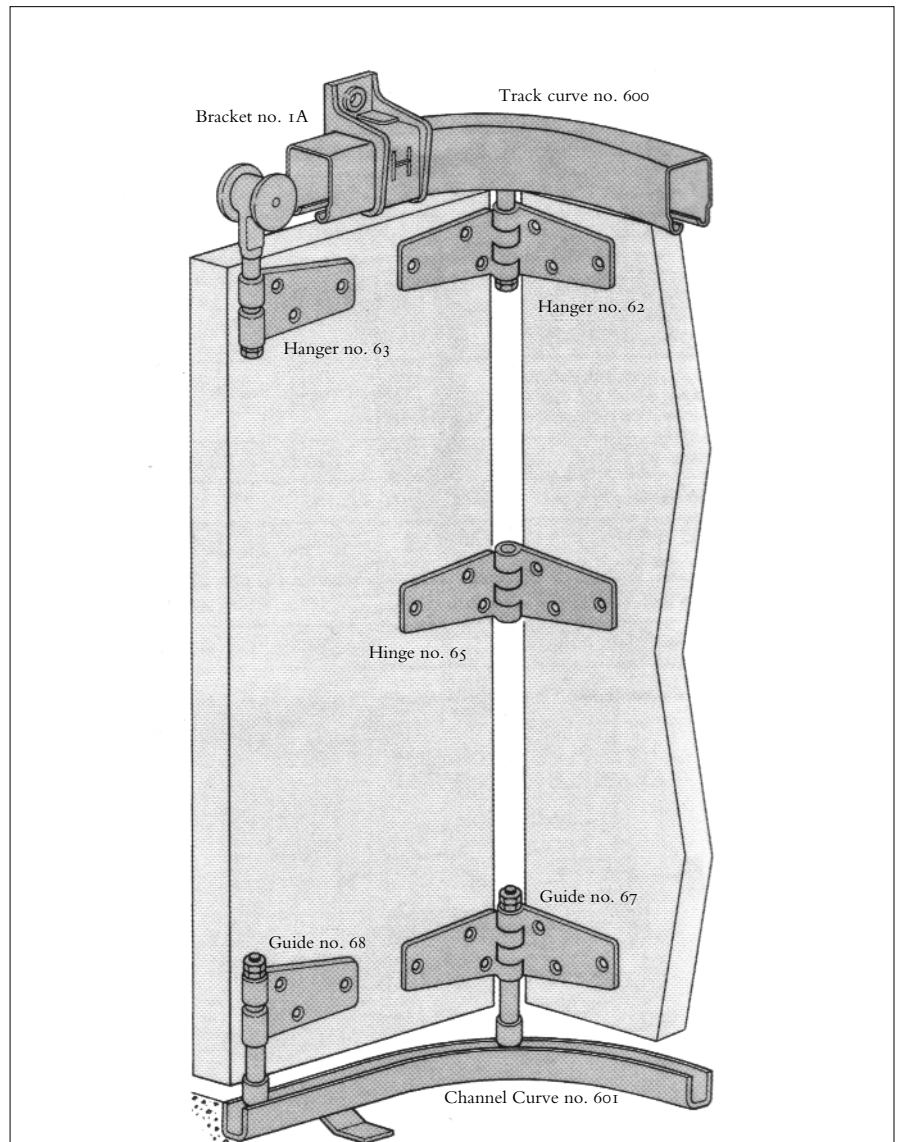
Components supplied include: track; track curves; support and jointing brackets; hangers; hinges; guides; bottom channel; channel curves; full range of accessories. (All steel parts are galvanised) Consult PC Henderson Technical Department or 'Expert' Service for guidance on quantities (see table for maximum leaf width and drawing for leaf detail).

## INSTALLATION NOTES

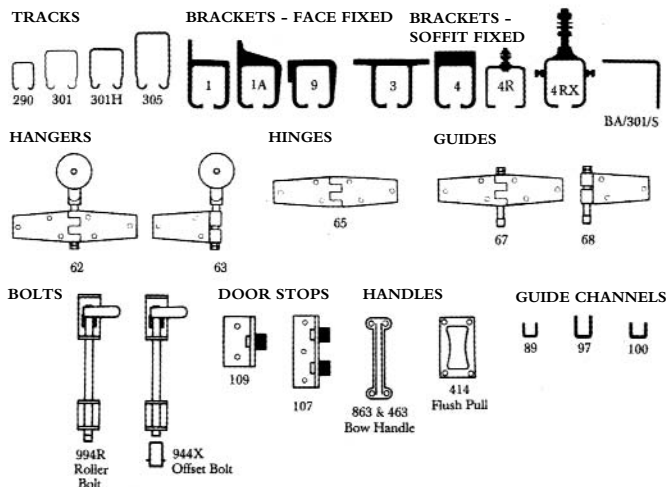
(also see drawing)

Hinges should be fixed to framing and joints of the door. For smooth operation, only 3-5 leaves should be hinged in one unit; any number of units may be used, sliding to one or both sides. The end leaf under the curve normally forms a swinging access door (see plan for details).

Typical installation detail drawings are also available from the Technical Department, PC Henderson.



## CHOICE OF GEARS



## HOW TO CHOOSE YOUR DOOR GEAR

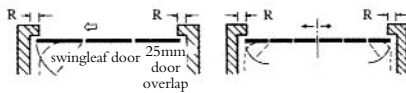
# TANGENT ROUND THE CORNER

Read across to required doorleaf height, then read downwards.

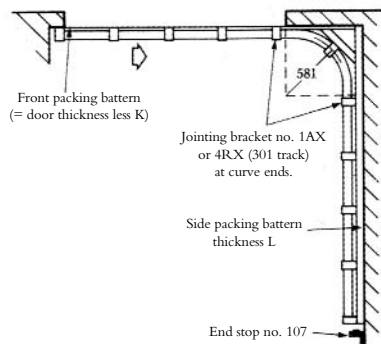
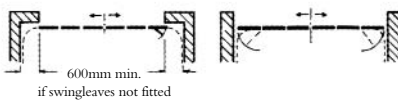
Tangent Round-the-corner System No.	290	301	301H	305	
<b>Maximum Leaf Height</b>	2400mm	3300mm	3600mm	4500mm	
<b>Maximum Leaf Weight</b>	35kg	55kg	70kg	80kg	
<b>Maximum Leaf Width (minimum 711mm)</b>	900mm	900mm	900mm	900mm	
<b>Leaf Thickness</b>	35-50mm	45-55mm	45-55mm	45-55mm	
<b>Track</b> Front track = opening width + reveal R - 800 Side track = opening width Available lengths: 1.8, 2, 2.5, 3, 4 & 6m	290	301	301H	305	
<b>Track Curves</b> Require 1, or 2 for biparting doors	600K	600B	600BH	600D	
<b>Brackets</b> - face fixing Fix every 900mm max and at track joints and curves Fix jointing brackets/sleeve at both curved ends	1A/290 1AX/290	1A/301 4RX/301TS	1A/301 4RX/301TS	1/305 1AX/305	
<b>Hangers</b> 1 per leaf joint and end leaf	Intermediate leaves End Leaf	62K 63K	62A 63A	62A 63A	62C 63C
<b>Hinges</b> 3 in height*		65	65	65	65C
<b>Guides</b> - 1 per leaf joint and end leaf	Intermediate Leaves End Leaf	67/89 68/89	67/97 68/97	67/97 68/97	67C/97 68C/97
<b>Channel</b> - Same length as track	89	97	97	97	
<b>Channel Curve</b> - No. as track curves	601/89	601/97	601/97	601/97	
<b>Bow Handles</b> 1 every 2 leaves	863	463	463	463	
<b>Flush Pull</b> 1 every 2 leaves	414	414	414	414	
<b>Roller Bolt</b> 1 per swingleaf door	994R	994R	994R	994R	

\* Increase to 4 for doors over 3000mm high.  
Fit offset bolt 994X on doors with trailing swingleaf, on all fixed units, unit of 5 leaves and biparting units.

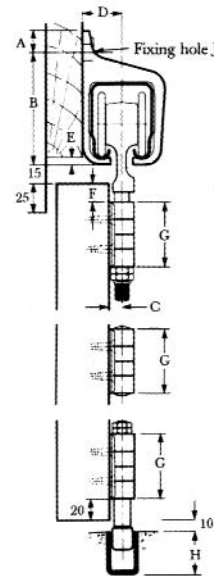
### EXAMPLE PLAN DETAILS



For convenient locking R should not exceed 360mm, but 115mm-230mm is ideal. If the swingleaf under the curve is not required R should be a min. of 690mm to accommodate the corner curve.



### SECTION DETAILS



TRACK	A	B	C	D	E	F	G	H	J	K	L
290	13	67	11	27	6	10	57	25	M8	6	65
301/301H	20	97	11	35	6	15	57	25	M12	16	70
305	25	140	14	38	10	15	83	38	M16	16	75

PC Henderson provide a full technical support service.

# TANGENT FOLDING

FOR FOLDING  
WOOD OR  
METAL DOORS

## EXTERNAL FOLDING

Robust top-hung door gear for commercial or light industrial wood or metal folding doors; deluxe fittings are also available in polished or satin anodised aluminium finishes. Doors may be panelled, flush or glazed. Seven systems are available to suit leaf weights up to 80kg.

### COMPONENTS

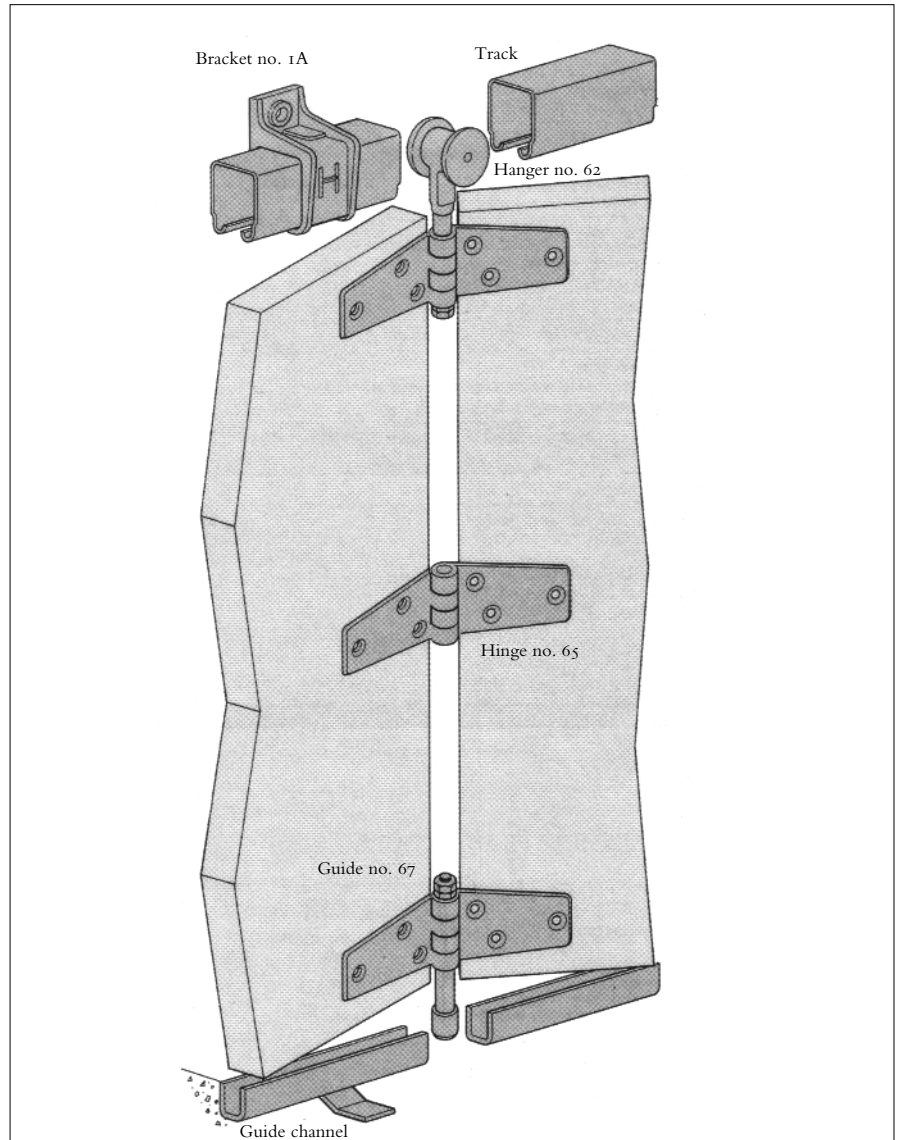
Components supplied include: track; support brackets; hangers; hinges; guides; bottom channel; range of accessories. (All steel parts are galvanised.) Consult PC Henderson Technical Department or 'Expert' Service for guidance on quantities (see table for maximum leaf width and drawing for leaf detail).

### INSTALLATION NOTES

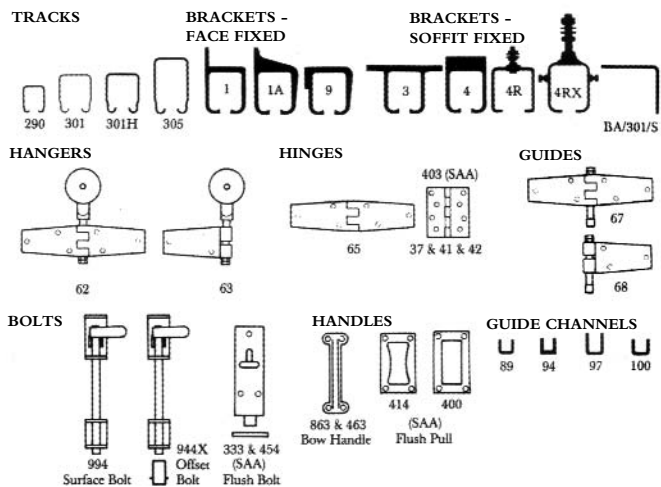
(also see drawing)

Hinges should be fixed to framing and joints to door. Up to 8 leaves can be hinged to jamb within the opening or behind a reveal. Free-floating units may also be used, of 4, 6 or 8 leaves for stability. A swinging pass door, only for leaves under 3000mm high, is obtained by using 3 or 5 leaves hinged to jamb or an independently hung leaf (see plan for details). If over 3000mm high, an independently hung leaf only is recommended.

Typical installation detail drawings are also available from the Technical Department, PC Henderson.



### CHOICE OF GEARS





# TANGENT FOLDING

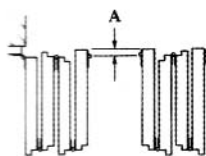
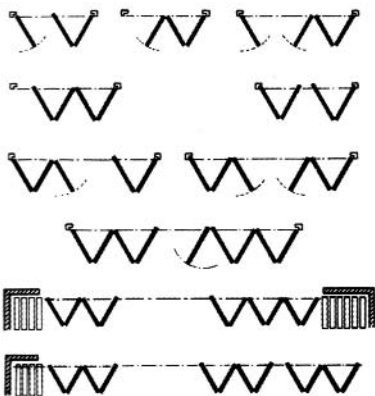
## HOW TO CHOOSE YOUR DOOR GEAR

Read across to required doorleaf height, then read downwards.

Tangent Folding System No.	290S	290D	301S	301D	301HS	301HD	305S
<b>FINISH**</b>	STANDARD	DELUXE	STANDARD	DELUXE	STANDARD	DELUXE	STANDARD
<b>Maximum Folding Leaf Height</b>	2400mm	2400mm	3300mm	3300mm	3600mm	3600mm	4500mm
<b>Maximum Folding Leaf Weight</b>	35kg	35kg	55kg	55kg	70kg	70kg	80kg
<b>Maximum Folding Leaf Width</b>	900mm	900mm	900mm	900mm	900mm	900mm	900mm
<b>Leaf Thickness</b>	35-50mm	35-50mm	45-55mm	45-55mm	45-55mm	45-55mm	45-55mm
<b>Track</b> Equal to width of opening (extra if doors slide further) Available lengths: 1.8, 2, 2.5, 3, 4 & 6m	290	290	301	301	301H	301H	305
<b>Brackets</b> - face fixed	1A/290	1A/290	1A/301	1A/301	1A/301	1A/301	1/305
<b>Brackets</b> - soffit fixed	3A/290	3A/290	3A/301	3A/301	3A/301	3A/301	3A/305
Fix every 900mm max and at track joints Fix extra bracket where leaves stack							
<b>Hangers</b> 1 every 2 leaves							
Intermediate leaves	62K	62K/P	62A	62A/P	62A	62A/P	62C
End Leaf	63K	63K/P	63C	63A/P	63A	63A/P	63C
<b>Hinges</b> 3 in height*	65	403/2 403/3	65	403/2 403/3	65	403/2 403/3	65C
<b>Guides</b> - 1 every 2 leaves	67/89	67/94P	67/97	67/94P	67/97	67/94P	67C/97
Intermediate Leaves							
End Leaf	68/89	68/94P	68/97	68/94P	68/97	68/94P	68C/97
<b>Channel</b> - Same length as track (Galvanised wire steel)	89	94	97	94	97	94	97
<b>Handles</b> 1 every 2 leaves	863	400	463	400	463	400	463
<b>Bolt</b> 1 every 2 leaves	994	333	994	454	994	454	994

\*\* Standard or deluxe finishes (polished/anodised fittings) are available. \* Increase to 4 when doors exceed 3000mm high  
No more than 8 leaves should be hinged together, and can be hinged to jamb or floating.  
A swinging pass door is obtained by using 3 or 5 leaves hinged to jamb, or an independently hung leaf. For doors over 3000mm high a wicket door is recommended.

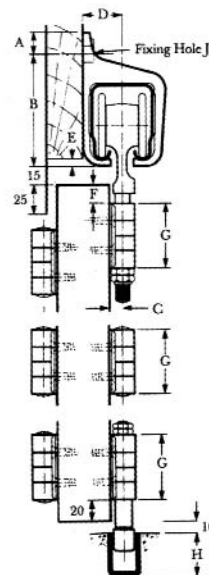
### EXAMPLE PLAN DETAILS



**WIDTH OF LEAVES**  
ALL ALIKE EXCEPT END LEAVES  
WITH HANGERS WHICH MUST BE  
WIDER BY DIMENSION 'A'

TANGENT FOLDING AND FOLDING DELUXE	A
TRACK 290	20
TRACK 301/301H	30
TRACK 305	38

### SECTION DETAILS



TRACK	A	B	C	D	E	F	G	H	J
290	13	67	11	27	6	10	57	25	M8
301/301H	20	97	11	35	6	15	57	38	M12
305	25	140	14	38	10	15	83	38	M16

PC Henderson provide a full technical support service.

All dimensions in mm

# ENDFOLD PARTITION (COUNCIL)

FOR END FOLDING  
WOOD PARTITION  
DOORS

Quality top-hung gear and fittings for end folding wood partition doors. Four systems are available to a maximum leaf weight of 80kg.

## COMPONENTS

Components supplied include: support brackets and track; top hangers; hinges; guides; bottom channel; full range of accessories. Consult your PC Henderson Technical Department or 'Expert' Service for guidance on quantities. (See table for maximum leaf width).

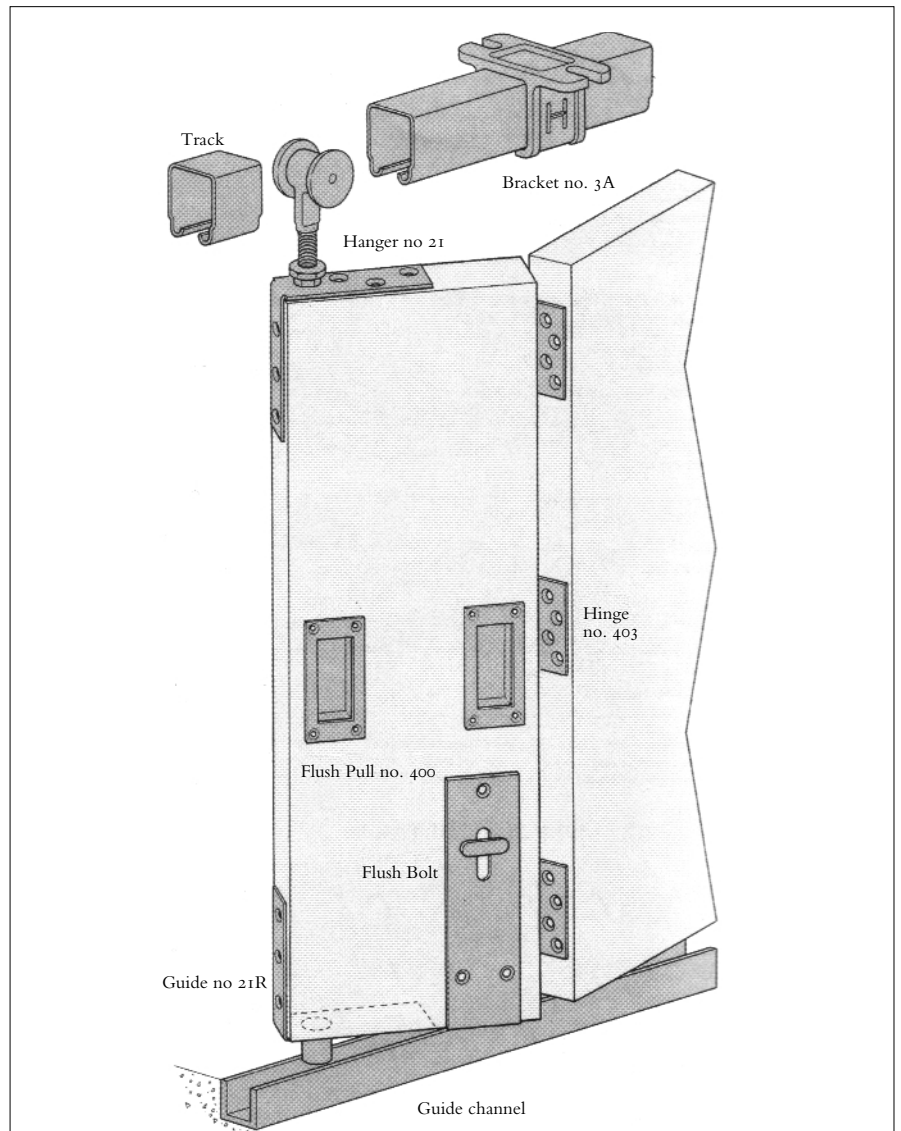
## INSTALLATION NOTES

Doors must be constructed with solid top and bottom rails and stiles for secure fixing of components.

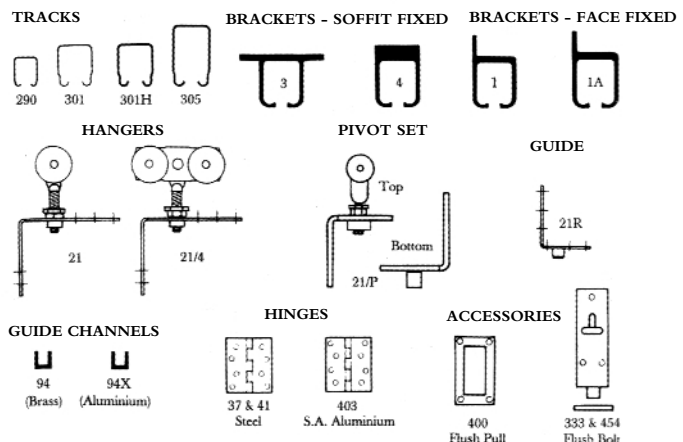
Leaves may be panelled, flush or glazed. For best operation, not more than 8 leaves to be hinged to one jamb (see inset drawing for fixing detail of flush endfold pivot gear) or anchored by pivots, alternatively leaves may be floating in units of 4, 6 or 8. An access door can be a swing leaf at the end of a 3, 5 or 7 leaf unit or independently hung to the jamb.

On door heights over 3000mm consult PC Henderson Technical Department.

Typical installation detail drawings are also available from the Technical Department, PC Henderson.



## CHOICE OF GEARS



# ENDFOLD PARTITION (COUNCIL)

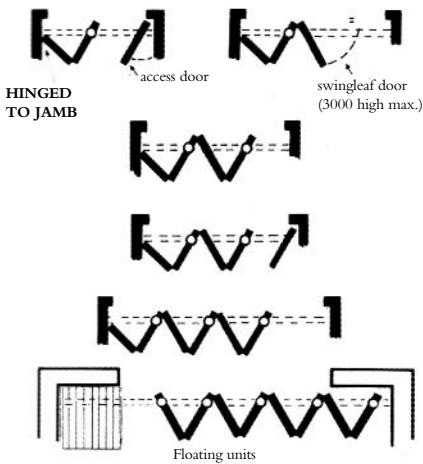
## HOW TO CHOOSE YOUR DOOR GEAR

Read across to required doorleaf height, then read downwards.

Council Endfold System No.	290	301	301H	305
<b>Maximum Folding Leaf Height</b>	2700mm	3300mm	3600mm	4500mm
<b>Maximum Folding Leaf Weight</b>	35kg	55kg	70kg	80kg
<b>Maximum Folding Leaf Width</b>	900mm	900mm	900mm	900mm
<b>Leaf Thickness</b>	35-44mm	44-57mm	44-57mm	44-57mm
<b>Track</b> equal to width of opening (extra if doors slide further) Available lengths: 1.8, 2, 2.5, 3, 4 & 6m	290	301	301H	305
<b>Brackets - Soffit fixed.</b> Fix every 900mm max and at track joints Fix extra bracket where doors stack	3A/290	3A/301	3A/301	3A/305
<b>Hangers</b> 1 every 2 leaves (+ endleaf of floating unit only) Alternative type if adjacent to swingleaf	21K/S 21K/4N	21A/S 21A/4S	21A/S 21A/4S	21C/S
<b>Hinges</b> 3 in height* Alternative pivot set where equal width leaves are to be Anchored at one end	403/1 21K/P	403/2 21A/P	403/2 21A/P	403/3
<b>Guides</b> - 1 every 2 leaves (+ endleaf of floating unit only)	21KR/94	21R/94	21R/94	21R/94
<b>Guide Channel</b> - Same length as track - brass (available in 1.5 & 3m lengths) aluminium (available in 1.5, 2, 2.5 & 3m lengths)	94 94X	94 94X	94 94X	94 94X
<b>Flush Pull</b> 1 every 2 leaves (2 on end leaves of units)	400	400	400	400
<b>Flush Bolt</b> 1 every 2 leaves	333	454	454	454

No more than 6 leaves should be hinged together and can be hinged to jamb or floating.  
A swinging pass door is obtained by using a 3 or 5 leaf unit up to 3000mm high, or an independently hung leaf.  
\* Increase to 4 for doors over 3000mm high.

### EXAMPLE PLAN DETAILS

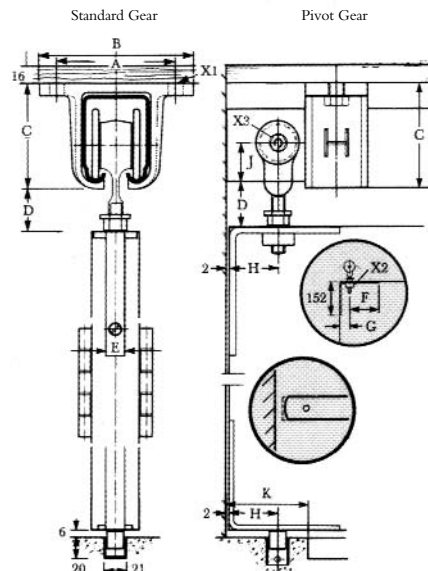


**WIDTH OF LEAVES**  
ALL ALIKE EXCEPT PIVOT LEAF  
HINGED TO JAMB WHICH MUST  
BE LESS BY 'A' PLUS 'B'

COUNCIL	B	A
ENDFOLD 290	38	HALF
ENDFOLD 301/301H	45	THE LEAF
ENDFOLD 305	45	THICKNESS

BUTTS  
ON  
JAMB  
NOT  
OFFSET

### SECTION DETAILS



TRACK	A	B	C	D	E	F	G	H	J	K	X1	X2	X3
290	64	83	56	20	13	114	38	38	20	70	M8	13	M6
301/301H	100	130	86	45	18	133	45	45	35	75	M12	20	M8
305	125	168	121	60	18	133	45				M16	20	

PC Henderson provide a full technical support service.

All dimensions in mm

# CENTREFOLD PARTITION (COUNCIL)

FOR CENTRE FOLDING WOOD PARTITION DOORS

HENDERSON

Quality top-hung gear and fittings for centre folding wood partition doors. Four systems are available to a maximum leaf weight of 80kg.

## COMPONENTS

Components supplied include: support brackets and track; top hangers; hinges; guides; bottom channel; full range of accessories. Consult your PC Henderson Technical Department or 'Expert' Service for guidance on quantities. (See table for maximum leaf width).

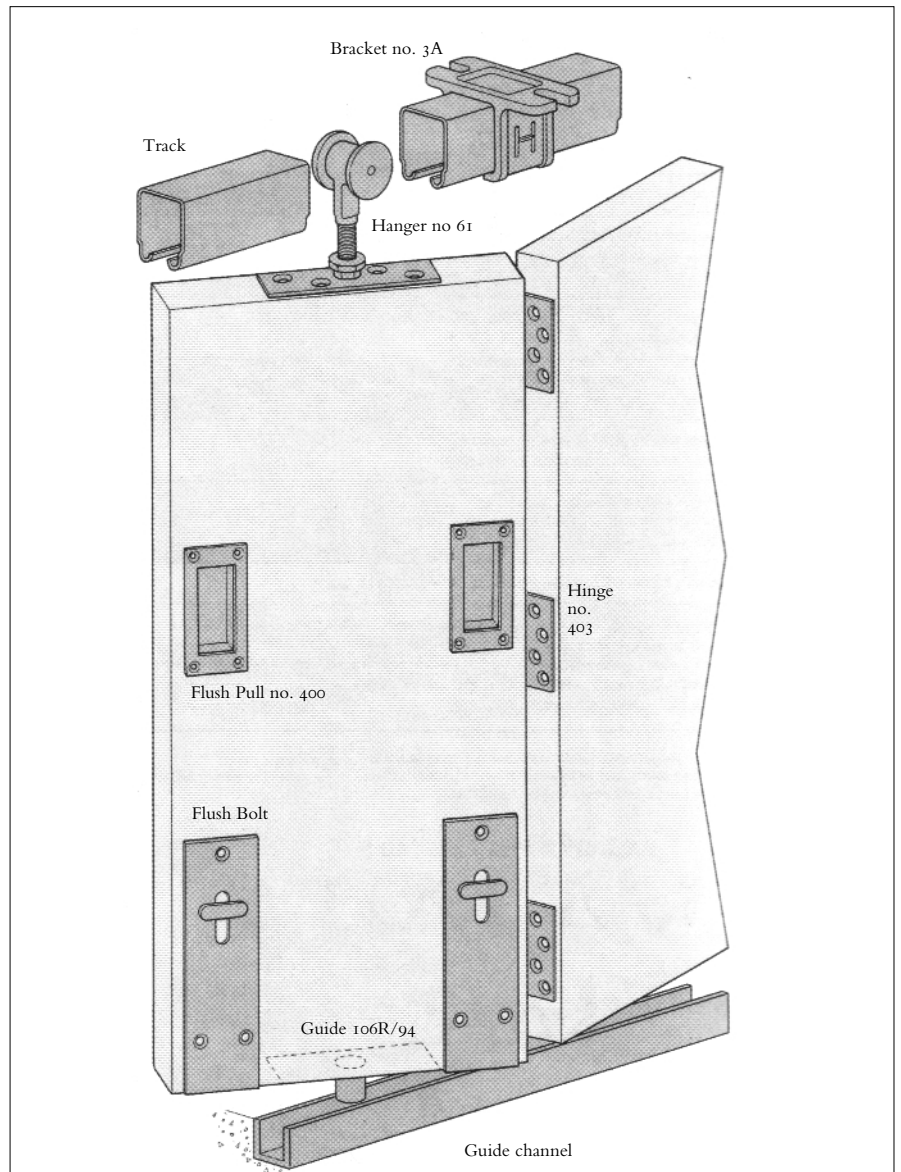
## INSTALLATION NOTES

(also see drawing)

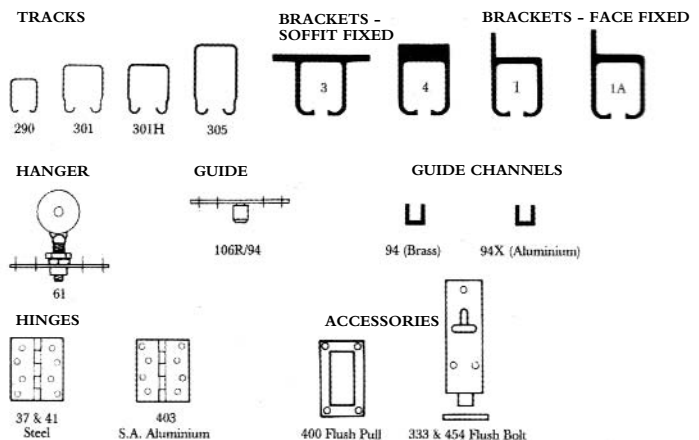
Doors must be constructed with solid top and bottom rails and stiles for secure fixing of components.

Leaves may be panelled, flush or glazed. For best operation, not more than 7 1/2 leaves to be hinged to one jamb (see inset drawing for fixing detail), alternatively leaves may be floating in units of 5, 7 or 9. Any access door should be hung separately to the jamb.

Typical installation detail drawings are also available from the Technical Department, PC Henderson.



## CHOICE OF GEARS



# CENTREFOLD PARTITION (COUNCIL)

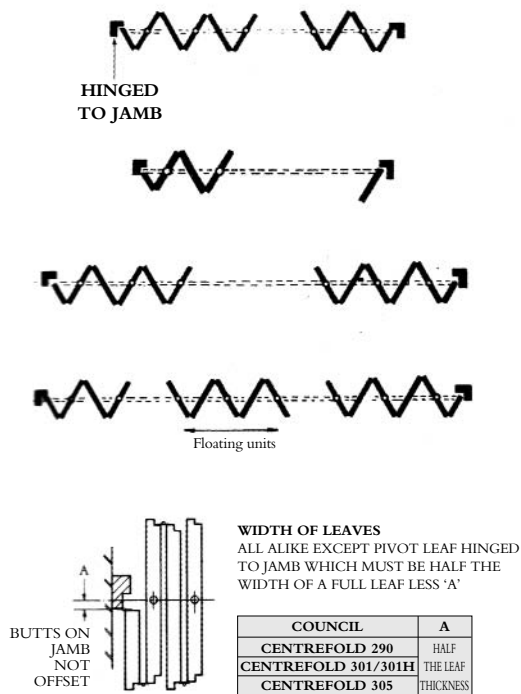
## HOW TO CHOOSE YOUR DOOR GEAR

Read across to required doorleaf height, then read downwards.

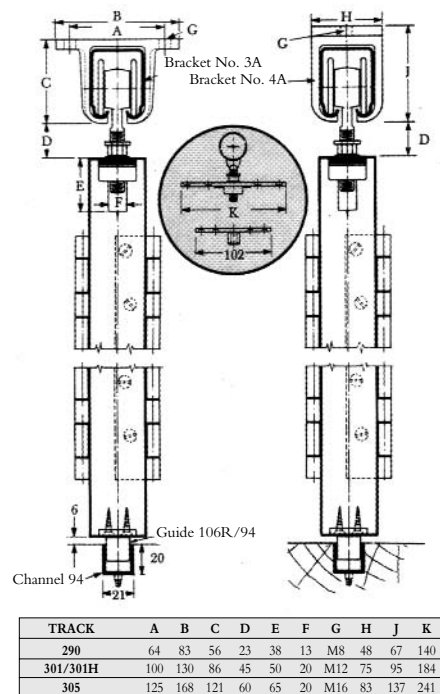
Council Centrefold System No.	290	301	301H	305
<b>Maximum Folding Leaf Height</b>	2700mm	3300mm	3600mm	4500mm
<b>Maximum Folding Leaf Weight</b>	35kg	55kg	70kg	80kg
<b>Maximum Folding Leaf Width</b>	1000mm	1000mm	1000mm	1000mm
<b>Door Thickness</b>	35-44mm	44-57mm	44-57mm	44-57mm
<b>Track</b> Equal to opening width Available lengths: 1.8, 2, 2.5, 3, 4 & 6m	290	301	301H	305
<b>Brackets - Soffit fixed.</b> Fix every 900mm max and at track joints Fix extra bracket where doors stack	3A/290	3A/301	3A/301	3A/305
<b>Hangers</b> 1 every 2 leaves	61K/S	61A/S	61A/S	61C/S
<b>Hinges</b> 3 in height*	403/1	403/2	403/2	403/3
<b>Guides</b> - 1 every 2 leaves	106R/94	106R/94	106R/94	106R/94
<b>Guide Channel</b> - Same length as track - brass (available in 1.5 & 3m lengths) aluminium (available in 1.5, 2, 2.5 & 3m lengths)	94 94X	94 94X	94 94X	94 94X
<b>Flush Pull</b> 1 every 2 leaves (2 on end leaf)	400	400	400	400
<b>Flush Bolt</b> 1 every 2 leaves (2 on end leaf)	333	454	454	454

Door should consist of 3, 5 or 7 folding leaves, with extra half leaf hinged to jamb. Alternatively, 5, 7 or 9 leaves may be floating.  
\* Increase to 4 for doors over 3000mm high.

### EXAMPLE PLAN DETAILS



### SECTION DETAILS



PC Henderson provide a full technical support service.

All dimensions in mm

High quality bottom roller gear and fittings for end folding wood partitions doors. Two systems are available to a maximum leaf weight of 140kg.

### COMPONENTS

Components supplied include: top guide brackets; top guide channel; top guide rollers; hinges; bottom rollers; bottom rail; full range of accessories. Consult PC Henderson Technical Department or 'Expert' Service for guidance on quantities. (See table for maximum leaf width).

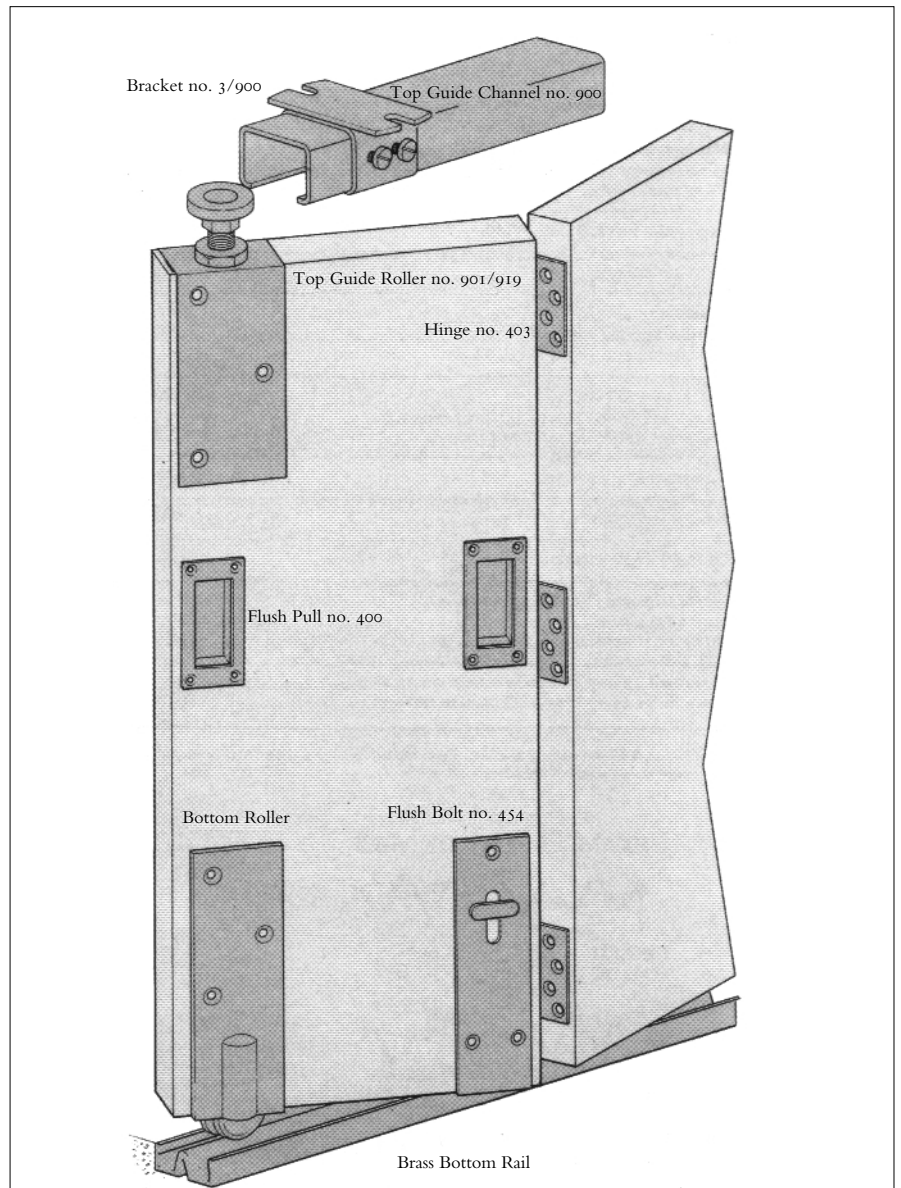
### INSTALLATION NOTES

(also see drawing)

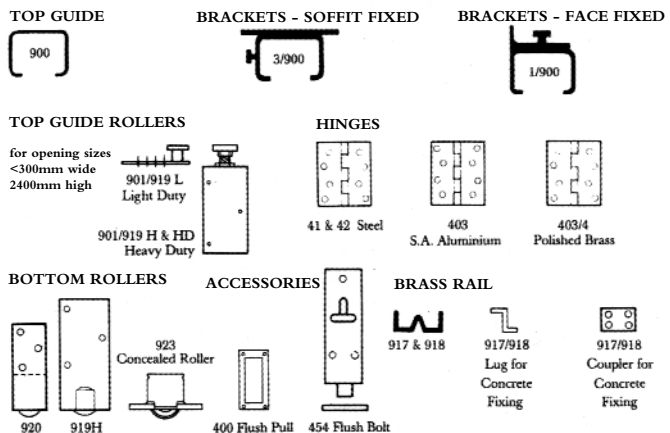
Doors must be constructed with solid top and bottom rails and stiles for secure fixing of components. Minimum 50mm wide and 75mm deep stiles for 923 concealed rollers (max. door weight 70kg) 125mm deep stiles for 920 rollers, 150mm deep for 919H rollers and 200mm deep bottom rails.

Leave may be panelled, flush or glazed. For best operation, no more than 8 leaves to be hinged to one jamb (see inset drawing for fixing detail), alternatively leaves may be floating in units of 6 or 8. Any swing door should be hung separately to the jamb.

Typical installation drawings are also available from the Technical Department, PC Henderson.



### CHOICE OF GEARS



## HOW TO CHOOSE YOUR DOOR GEAR

Read across to required doorleaf height, then read downwards.

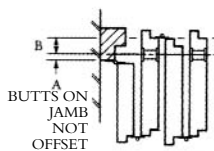
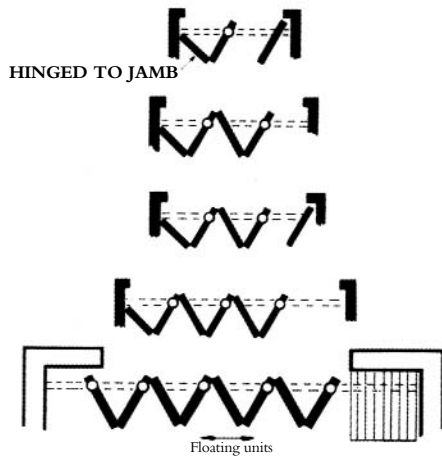
College Endfold System No.	ENDFOLD 70	ENDFOLD 140
<b>Maximum Folding Leaf Height</b>	3600mm	5500mm
<b>Maximum Folding Leaf Weight</b>	70kg	140kg
<b>Maximum Folding Leaf Width</b>	900mm	900mm
<b>Door Thickness</b>	44mm	54mm
<b>Top Guide Channel</b> Equal to opening width (extra if doors slide further) Available lengths: 2, 2.5 & 3m	900	900
<b>Brackets - Soffit fixed.</b> Fix every 600mm max and at channel joints Fix extra bracket where doors stack	3/900	3/900
<b>Top Guide Rollers</b> 1 every 2 leaves (+ endleaf of floating unit only)	901/919H	901/919HD
<b>Hinges</b> 3 in height*	403/2	403/3
<b>Bottom Rollers</b> 1 every 2 leaves (+ endleaf of floating unit only)	920/923	919H
<b>Bottom Rail</b> - same length as Top Guide Channel Available lengths 1.5m & 3m	918	917
<b>Flush Pull</b> 1 every 2 leaves (2 on end leaf)	400	400
<b>Flush Bolt</b> 1 every 2 leaves	454	454

\* Increase to 4 when doors exceed 3000mm high.

No more than 8 leaves should be hinged to jamb.

An access door can be independently hinged to a jamb or a wicket door fitted, but a swing door should not be attached to a folding unit.

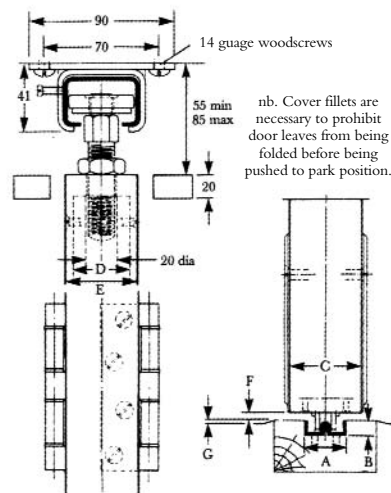
### EXAMPLE PLAN DETAILS



**WIDTH OF LEAVES**  
ALL ALIKE EXCEPT PIVOT LEAF HINGED TO JAMB WHICH MUST BE LESS BY 'A' PLUS 'B'

COLLEGE	B	A
ENDFOLD 70	38	HALF THE LEAF THICKNESS
ENDFOLD 140	51	HALF THE LEAF THICKNESS

### SECTION DETAILS



SYSTEM	A	B	C	D	E	F	G
ENDFOLD 70	25	10	44	34	44	5	2
ENDFOLD 140	35	13	54	44	54	6	3

All dimensions in mm

# COLLEGE CENTREFOLD

## FOR CENTRE FOLDING WOOD PARTITION DOORS

High quality bottom roller gear and fittings for centre folding wood partition doors. Two systems are available to a maximum leaf weight of 140kg.

### COMPONENTS

Components supplied include: top guide brackets; top guide channel; top guide rollers; hinges; bottom rollers; bottom rail; full range of accessories. Consult PC Henderson Technical Department or 'Expert' Service for guidance on quantities. (See table for maximum leaf width).

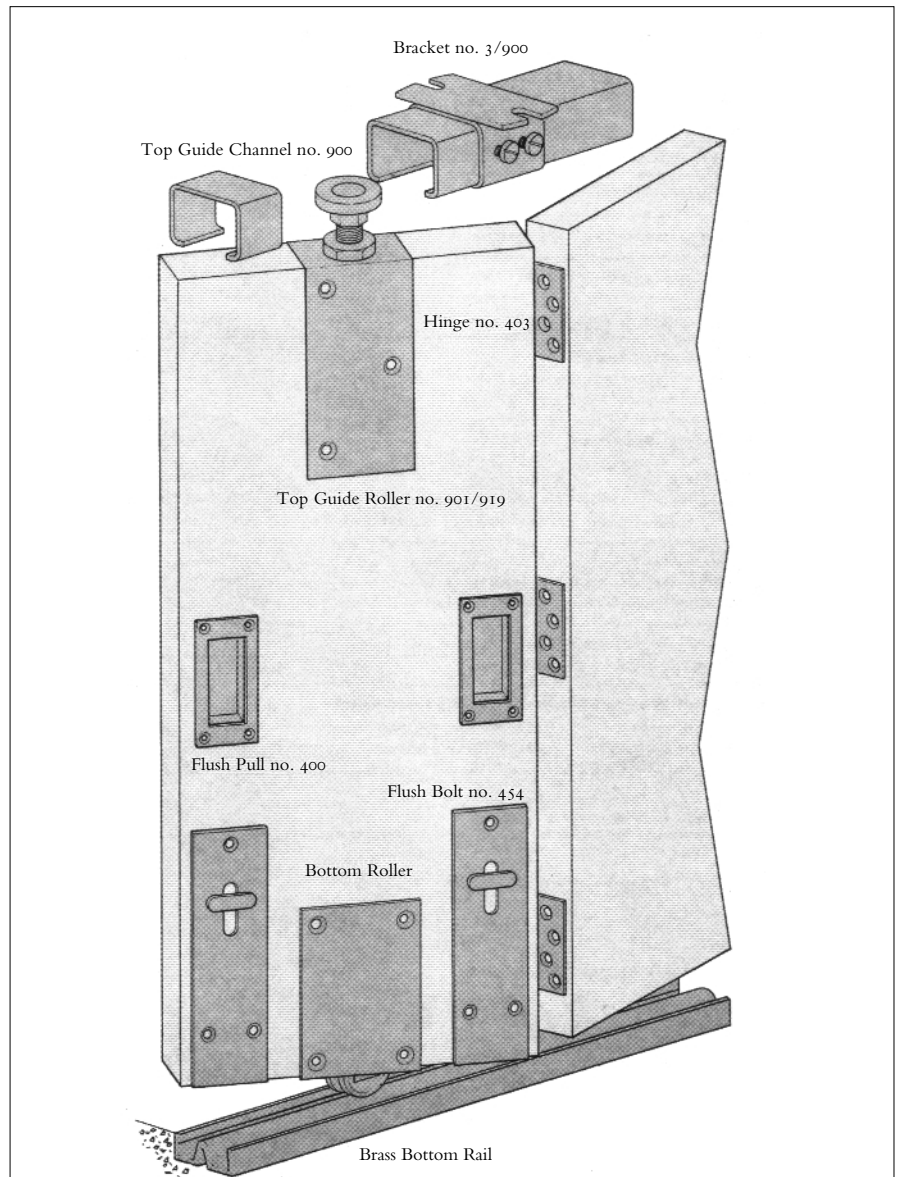
### INSTALLATION NOTES

(also see drawing)

Doors must be constructed with solid top and bottom rails and stiles for secure fixing of components. Minimum 50mm wide and 75mm deep stiles for 923 concealed rollers (max. door weight 70kg). Minimum 200mm deep for bottom rails.

Leaves may be panelled, flush or glazed. For best operation, not more than 7½ leaves to be hinged to one jamb (see inset drawing for fixing detail), alternatively leaves may be floating in units of 5 or 7. Any swing door should be hung separately to the jamb.

Typical installation detail drawings are also available from the Technical Department, PC Henderson.



### CHOICE OF GEARS

<b>TOP GUIDE</b>	<b>BRACKETS - SOFFIT FIXED</b>	<b>BRACKETS - FACE FIXED</b>
<b>TOP GUIDE ROLLERS</b>	<b>HINGES</b>	
901/909 L Light Duty	41 & 42 Steel	403 S.A. Aluminium
901/919 H & HD Heavy Duty	403/4 Polished Brass	403/4 Polished Brass
<b>BOTTOM ROLLERS</b>	<b>ACCESSORIES</b>	<b>BRASS RAIL</b>
920	923 Concealed Roller	917 & 918
909H	400 Flush Pull	917/918 Lag for Concrete Fixing
	454 Flush Bolt	917/918 Coupler for Concrete Fixing



## HOW TO CHOOSE YOUR DOOR GEAR

Read across to required doorleaf height, then read downwards.

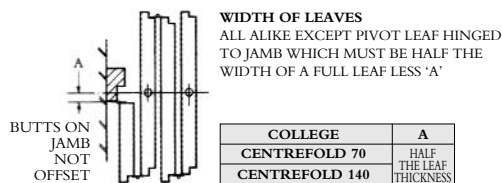
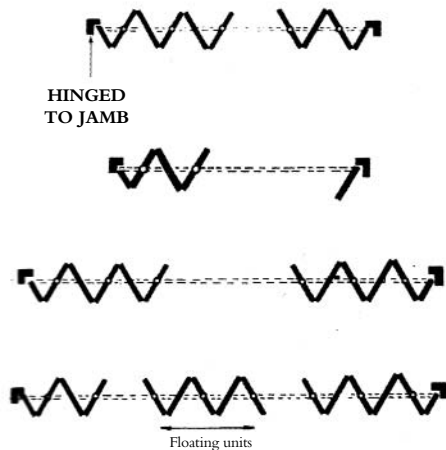
College Centrefold System No.	CENTREFOLD 70	CENTREFOLD 140
<b>Maximum Folding Leaf Height</b>	3600mm	5500mm
<b>Maximum Folding Leaf Weight</b>	70kg	140kg
<b>Maximum Folding Leaf Width</b>	1000mm	1000mm
<b>Door Thickness</b>	44mm	54mm
<b>Top Guide Channel</b> Equal to opening width Available lengths: 2, 2.5 & 3m	900	900
<b>Brackets - Soffit fixed.</b> Fix every 600mm max and at channel joints Fix extra bracket where doors stack	3/900	3/900
<b>Top Guide Rollers</b> 1 every 2 leaves	901/919H	901/919HD
<b>Hinges</b> 3 in height*	403/2	403/3
<b>Bottom Rollers</b> 1 every 2 leaves	920/923	909H
<b>Bottom Rail</b> - same length as Guide Channel Available lengths 1.5m & 3m	918	917
<b>Flush Pull</b> 1 every 2 leaves**	400	400
<b>Flush Bolt</b> 1 every 2 leaves**	454	454

\* Increase to 4 when doors exceed 3000mm high.

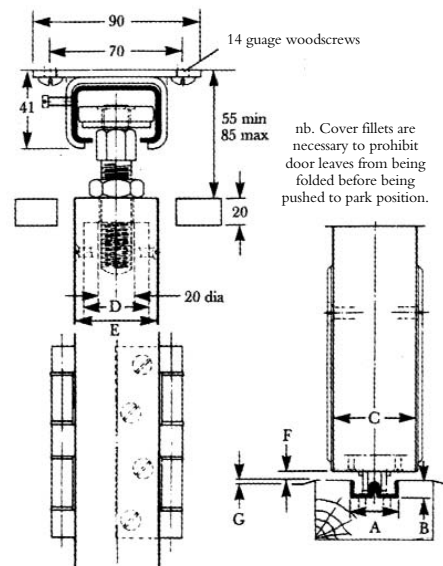
No more than 7 1/2 leaves should be hinged to the jamb, or 7 leaves maximum for a floating unit

An access door can be independently hinged to a jamb, but a swing door should not be attached to a folding unit. \*\* Two on endleaves of units.

### EXAMPLE PLAN DETAILS



### SECTION DETAILS



SYSTEM	A	B	C	D	E	F	G
CENTREFOLD 70	25	10	44	34	44	5	2
CENTREFOLD 140	35	13	54	44	54	6	3

PC Henderson provide a full technical support service.

High quality bottom roller gear and fittings for end and centre folding aluminium section glazed for retail and display applications to a maximum leaf weight of 70kg.

### COMPONENTS

Components supplied include: top guide brackets; top guide channel; top guide rollers; back flap hinges; bottom rollers; bottom rail; full range of accessories. Consult PC Henderson Technical Department or 'Expert' Service for guidance on quantities. (See table for maximum leaf width).

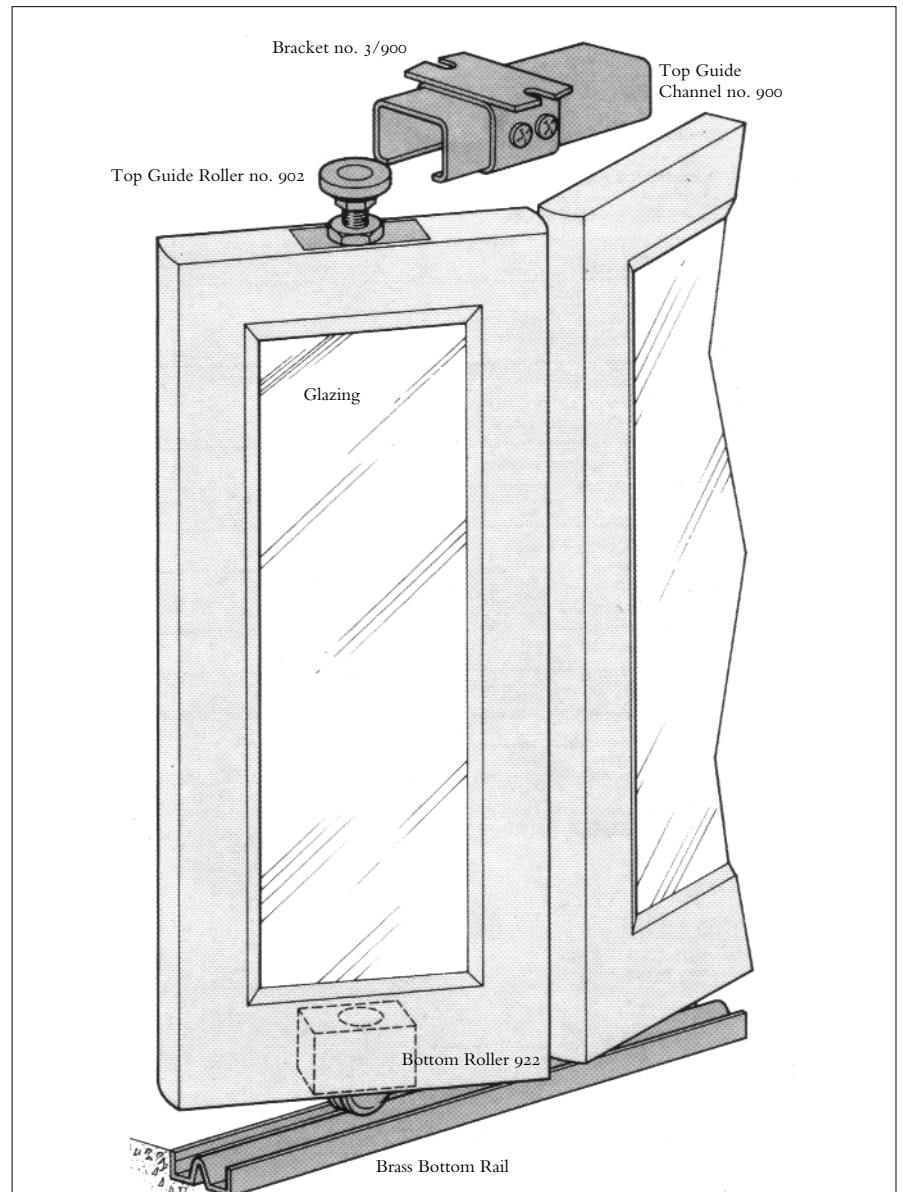
### INSTALLATION NOTES

(also see drawing)

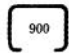


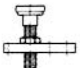

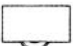


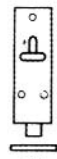
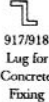
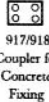
For doors constructed with standard aluminium section rails and stiles, with glazed panels.

For best endfold operation, not more than 8 leaves to be hinged to one jamb (see inset drawing for fixing detail), alternatively leaves may be floating in units of 6 or 8. Any access door should be hung separately to the jamb. For best centrefold operation, not more than 7½ leaves to be hinged to one jamb (see inset drawing for fixing detail), alternatively leaves may be floating in units of 5 or 7. Any access door should be hung separately to the jamb.

Typical installation detail drawings are also available from the Technical Department, PC Henderson.



### CHOICE OF GEARS

<b>TOP GUIDE</b>	<b>BRACKETS - SOFFIT FIXED</b>	<b>BRACKETS - FACE FIXED</b>
 900	 3/900	 1/900
<b>TOP GUIDE ROLLERS</b>	<b>HINGES</b>	
 Adjustable Guide No. 902	 65 or 65P Aluminium	
<b>BOTTOM ROLLERS</b>	<b>ACCESSORIES</b>	<b>BRASS RAIL</b>
 922	 400 Flush Pull	 917 & 918
	 454 Flush Bolt	 917/918 Lug for Concrete Fixing
		 917/918 Coupler for Concrete Fixing

## HOW TO CHOOSE YOUR DOOR GEAR

Read across to required doorleaf height, then read downwards.

Arcade System No.	ENFOLD A70	CENTREFOLD A70
<b>Maximum Folding Leaf Height</b>	3600mm	3600mm
<b>Maximum Folding Leaf Weight</b>	70kg	70kg
<b>Maximum Folding Leaf Width</b>	900mm	1000mm
<b>Door Thickness</b>	45-47mm	45-47mm
<b>Top Guide Channel</b> Equal to opening width Available lengths: 2, 2.5 & 3m	900	900
<b>Brackets - Soffit fixed.</b> Fix every 600mm max and at channel joints Fix extra bracket where doors stack	3/900	3/900
<b>Top Guide Rollers</b> 1 every 2 leaves	902	902
<b>Hinges</b> 3 in height*	65/65P	65/65P
<b>Bottom Rollers</b> 1 every 2 leaves	922	922
<b>Bottom Rail</b> - same length as Guide Channel Available lengths 1.5m & 3m	918	918
<b>Flush Pull</b> 1 every 2 leaves**	400	400
<b>Flush Bolt</b> 1 every 2 leaves**	454	454

\* Increase to 4 when doors exceed 3000mm high.

Endfold: No more than 8 leaves should be hinged to the jamb. Centrefold: No more than 7 1/2 leaves should be hinged to the jamb, or 7 leaves maximum for a floating unit. An access door can be independently hinged to a jamb, but a swing door should not be attached to a folding unit. \*\* Two on endleaves of units.

### EXAMPLE PLAN DETAILS

#### ENDFOLD

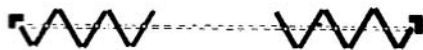


HINGED TO JAMB

#### CENTREFOLD

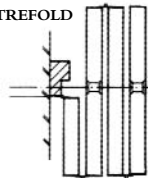


HINGED TO JAMB

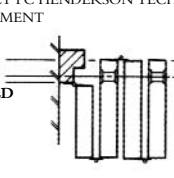


**WIDTH OF LEAVES**  
DEPENDENT ON DOOR CONSTRUCTION  
CONSULT PC HENDERSON TECHNICAL  
DEPARTMENT

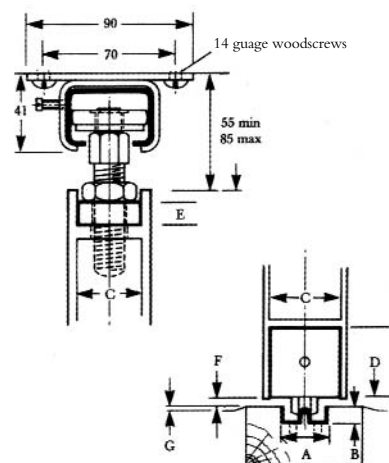
#### CENTREFOLD



#### ENDFOLD



### SECTION DETAILS



SYSTEM	A	B	C	D	E	F	G
END & CENTREFOLD	25	10	38	38	12	5	2

PC Henderson provide a full technical support service.

PC HENDERSON

Quality, heavy duty cantilever gear for sliding metal gates suitable for industrial and commercial use - for security, traffic control and where road surface is uneven, eg railway lines. Cantilever gates leave the roadway free of channels, guide rails or other obstructions, using a track which fits to the bottom rail of the gate and runs on internal rollers for security and weather protection. Can also be used for heavy doors where no overhead support exists. Two systems are available to suit openings up to 10m wide and weights up to 550kg (power operated - power operation not by PC Henderson) or 1000kg (manually operated).

### COMPONENTS

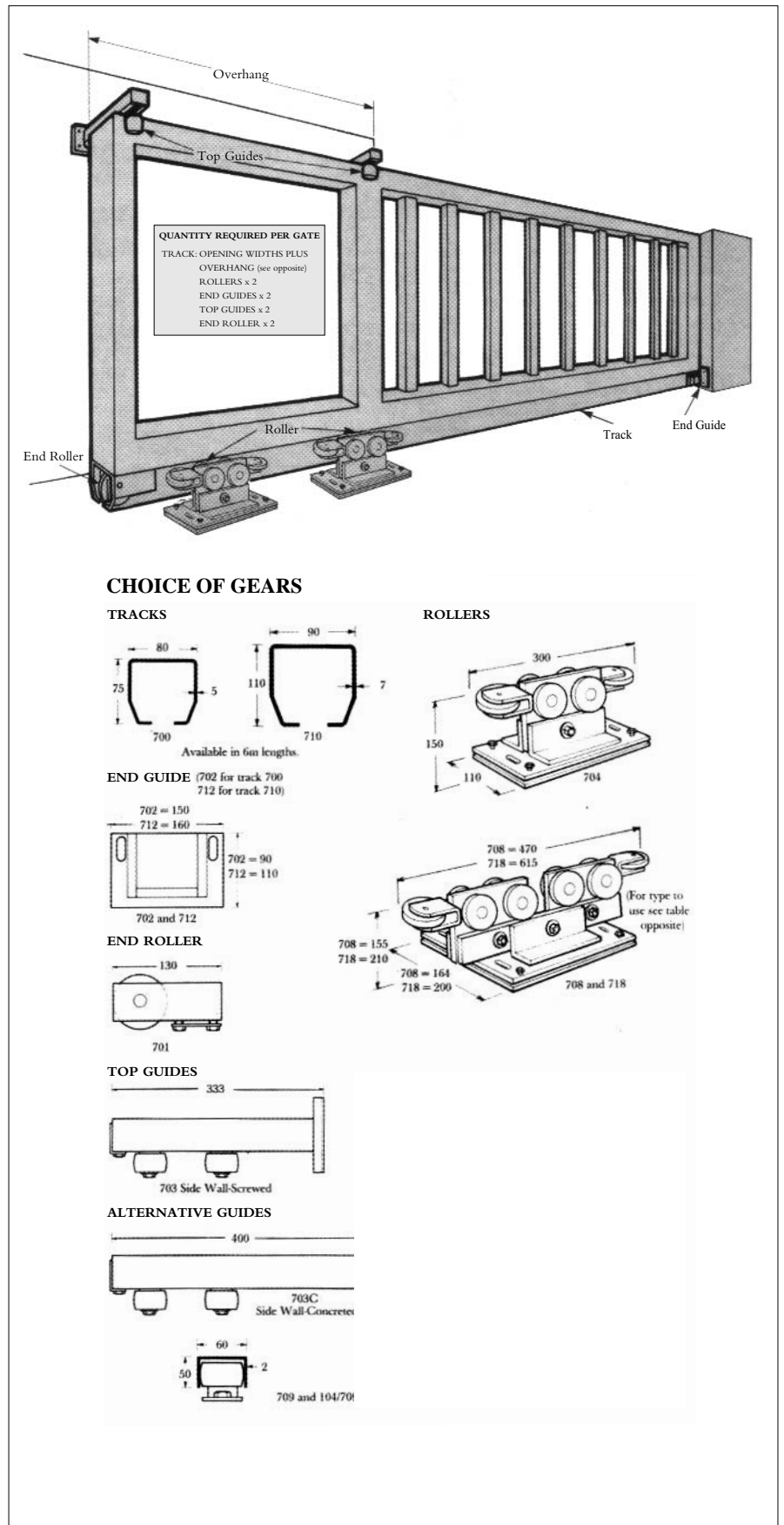
Components supplied per gate include: bottom rollers; top guides; end guides; end rollers; track - length determined by opening width plus overhang. (All steel parts are galvanised.) Table opposite indicates choice of gear dependent on gate weight, overhang and opening width.

### INSTALLATION NOTES

(also see drawing)

Gates should be constructed from welded square steel tubing. Enough space is required to slide gate completely clear of opening. Rollers should be mounted on substantial concrete footings, and spaced as widely as possible.

Typical installation detail drawings are also available from the Technical Department, PC Henderson.



## HOW TO CHOOSE YOUR GATE GEAR

Read across to required doorleaf height, then read downwards.

Choose gate type, manual or automatic. Read across to required gate opening width, then read downward to estimated gateweight. Shaded area indicates roller type and overhang length required.

■ Use a pair of rollers No.704 and track No.700

□ Use a pair of rollers No.708 and track No.700

□ Use a pair of rollers No.718 and track No.710

### MANUAL

		OPENING WIDTH (m)																	
		2	2.5	3	3.5	4	4.5	5	5.5	6	6.5	7	7.5	8	8.5	9	9.5	10	
Gate Weight	200kg	1.7	1.7	1.7	1.8	1.9	2.0	2.1	2.3	2.4	1.7	1.7	1.7	1.8	1.9	1.9	2.0	2.0	
	300kg	2.1	2.3	2.6	2.8	3.1	3.3	3.6	3.8	4.1	2.2	2.3	2.5	2.6	2.7	2.8	2.9	3.0	
	400kg			1.8	2.0	2.2	2.4	2.6	2.8	2.9	3.1	3.3	3.4	3.6	3.8	3.9	4.1	4.3	
	500kg					3.1	3.3	3.6	3.8	4.1	4.3	4.6	2.1	2.2	2.2	2.3	2.4	2.5	
	600kg							2.1	2.1	2.1	2.2	2.4	2.5	2.6	2.7	2.8	2.9	3.0	
	700kg							2.2	2.4	2.5	2.6	2.8	2.9	3.0	3.2	3.3	3.5	3.6	
	800kg							2.6	2.8	2.9	3.1	3.3	3.4	3.6	3.8	3.9	4.1	4.3	
	900kg							3.0	3.2	3.4	3.7	3.9	4.1	4.3	4.5	4.7			
	1000kg							3.6	3.8	4.0	4.3	4.6							

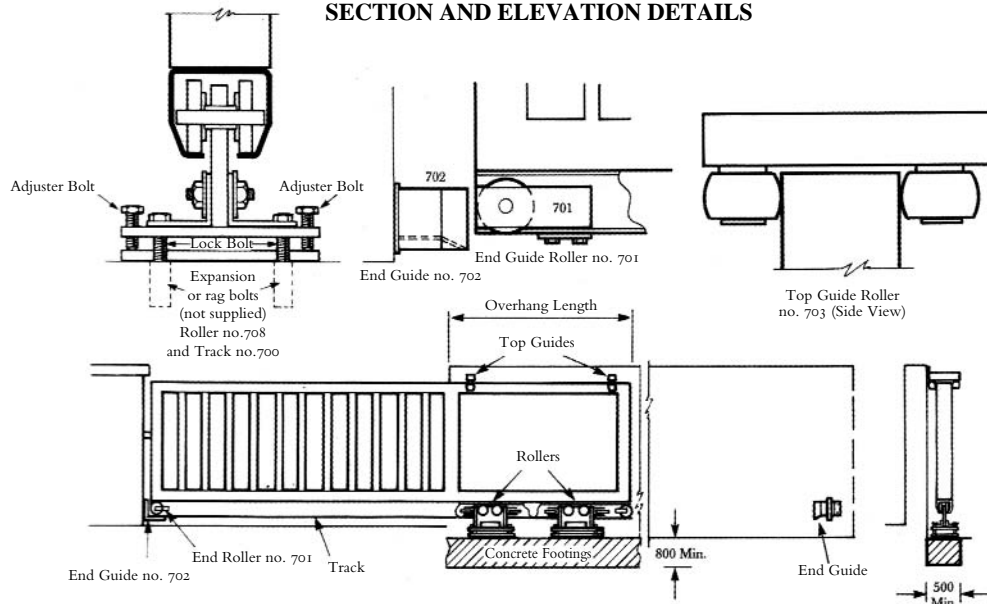
Overhang length in metres is shown in the boxes

### AUTOMATIC

		OPENING WIDTH (m)																		
		2	2.5	3	3.5	4	4.5	5	5.5	6	6.5	7	7.5	8	8.5	9	9.5	10		
Gate Weight	100kg	1.7	1.7	1.7	1.7	1.7	1.7	1.8	1.9	2.0										
	150kg	1.7	1.9	2.1	2.3	2.5	2.7	2.8	2.9	3.0	3.2									
	200kg	2.5	2.8	3.2	3.5	3.8	4.2	4.5	4.8	5.2	2.9	1.7	1.7	1.7	1.8	1.9	1.9	2.0	2.0	
	250kg	2.1	2.4	2.7	3.0	3.2	3.5	3.8	4.1	4.3	4.6	1.7	1.8	1.9	2.0	2.1	2.2	2.3	2.4	2.5
	300kg	2.7	3.1	3.5	3.9	4.2	4.6	5.0	5.4	5.7	2.1	2.3	2.4	2.5	2.6	2.7	2.8	2.9	3.0	3.0
	350kg						2.1	2.2	2.4	2.5	2.6	2.8	2.9	3.0	3.2	3.3	3.5	3.6		
	400kg						2.4	2.6	2.8	2.9	3.1	3.3	3.4	3.6	3.8	3.9	4.1	4.3		
	450kg						2.8	3.0	3.2	3.5	3.7	3.9	4.1	4.3	4.5	4.7				
	500kg						3.3	3.6	3.8	4.1	4.3	4.6								
	550kg						3.9	4.2	4.5	4.8										

Overhang length in metres is shown in the boxes

### SECTION AND ELEVATION DETAILS



Note: Rollers should be set as far apart as possible but allow space for end roller no.701 (130mm) at both track ends.

PC Henderson provide a full technical support service.

All dimensions in mm

Steel frame sections supplied in kit form for on-site construction of economical, sturdy sliding doors clad with suitable metal or wood sheeting to choice (door cladding not supplied by PC Henderson). Designed for use with 301 track, hangers and brackets. Wall mounted guide system (VG1) ideal for farm doors or dirty industrial applications - no floor channel is needed. Conventional guide system (VG2) for use with bottom channel 97 also available. Suitable for doors up to 5m x 5m.

Versaframe kit supplied per door includes frame lengths and fittings. Order frame section length kits plus fittings kit according to door height and width as per table above, plus: 301 track to twice the width of proposed door; 2 x 56 AX/S or 56AX/N hangers; sufficient 1/301/S brackets for fixing at 900mm centres along track - (600mm centres for doors over 400kg.) (See pages 24-27.)

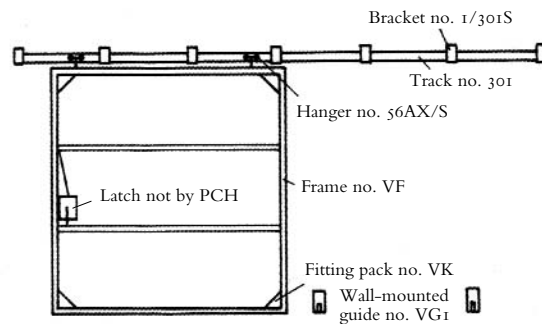
### INSTALLATION NOTES

Door width should not exceed height. For smoothest operation, width of door should be 2/3 height. Typical installation detail drawings are available from the Technical Department, PC Henderson.

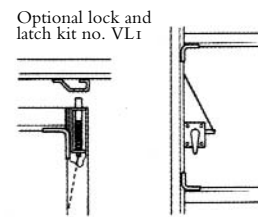
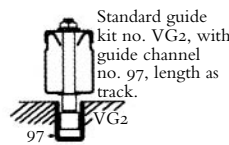
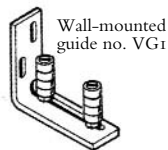
Door width	Door Height				Track length of 301/301H	Min no. of 1/301/S Brackets required
	2m	3m	4m	5m		
2m	5xVF2	4xVF2	5xVF2	6xVF2	4m	6
		2xVF3	2xVF4	2xVF5	6m	8
4m	6xVF3	5xVF3	6xVF3	2xVF5		
		2xVF4	2xVF5	10m	13	
5m			7xVF4			6xVF4
				2xVF5		
				8xVF5		

### Versaframe hangers, guides & fittings

2m	3m	4m	5m	
VK2	Vk3	VK4	VK5	Fitting kit per door height
2	2	2	2	no.56 AX hangers per door
VG1	VG1	VG1	VG1	Guide kit - wall mounted
VG2	VG2	VG2	VG2	Guide kit - standard (order channel 97 to same length as 301 track)



Guides: 1 kit required per leaf.



## 301 FARM PACKS

### SLIDING GEAR PACKS FOR TIMBER OR METAL DOORS

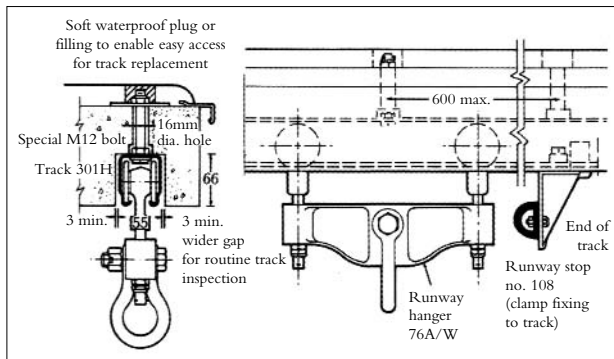
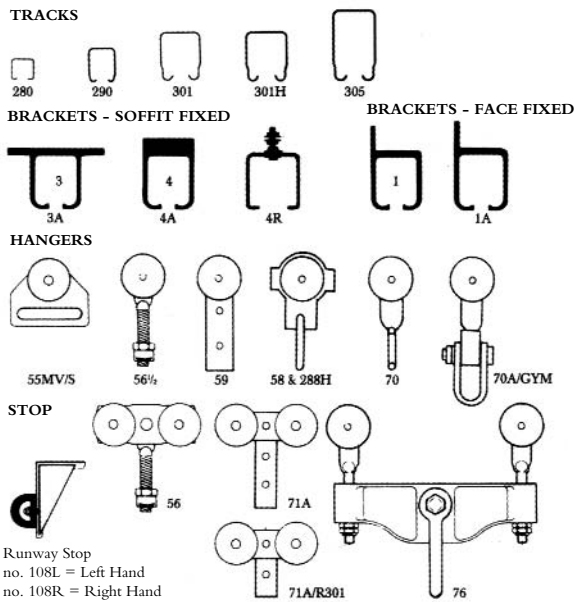
301 farm packs provide all components required for hanging a sliding timber or metal door weighing upto 400kg

Sets contain 2 hangers no. 53A/5 (+ locking nuts for metal doors) track no. 301 (twice door width); face fixing brackets no. 1/301/S (for approx. 900mm centres); 2 bracket

end clips no. 1A/301/EC; 2 stay rollers no.126; 1 bow handle no. 863. For Biparting doors, order two sets plus no. 128 shoe guide/centre stop.

Door widths up to	Kits
1800mm	FP6
2700mm	FP9
3600mm	FP12

**CHOICE OF GEARS**



The use of highly reliable, tracked sliding gear for personnel safety restraint on high-rise buildings and similar applications offers versatility, ease and speed in cleaning and maintenance.

Henderson sliding gear, tested to 136kg in accordance with BS 1397:1979, is an ideal way to achieve safety with a high degree of functionality. The gear is recommended to be incorporated into the design of the building, or other structure, cf. the typical details for window cleaning, below.

All systems should be discussed with PC Henderson Technical Department.

For window cleaning safety restraints, specially prepunched track is let into a purpose-cast recess in the overhead concrete slab, and secured with purpose-designed bolt assemblies (see drawing). Straight track only may be used.

This assembly has been drop tested to 136kg through 1.83m generally in accordance with BS 1397:1979, and with the approved Safety Harness to BS 1397:1979 (not from PCH).

For more information ask for our Window Cleaning Gear data sheet.

For details on loading and other safety-in-use features, please consult PC Henderson Technical Department.

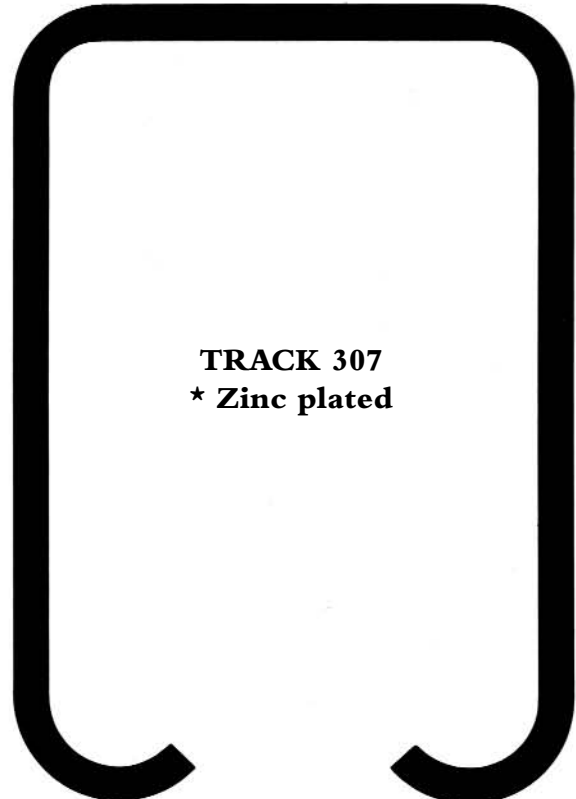
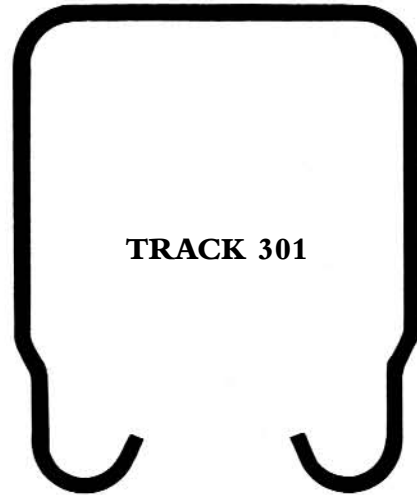
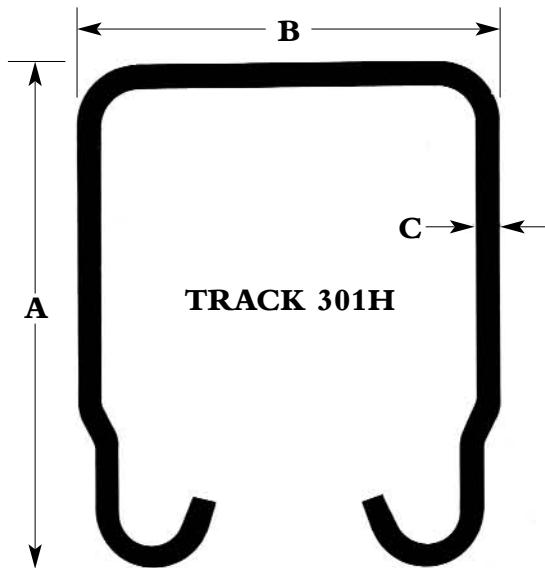
# COMPONENT DRAWINGS

## TRACK

All tracks are in galvanised finish.\* Once installed they should be kept greased, to reduce wear and increase life. Any length of track is obtained by putting sections of track together and fixing a jointing bracket at the joints, and using end clips or closed brackets at each end.

**Available lengths**  
**280-305:** 1.8, 2, 2.5, 3, 4 & 6m  
**307:** 2, 2.5 & 3m

(mm)	280	290	301	301H	305	307
<b>A</b>	29	45	66	66	93	104
<b>B</b>	30	36	55	55	57	73
<b>C</b>	1.2	2	2	3	3	5



**FULL SIZE SECTIONS**

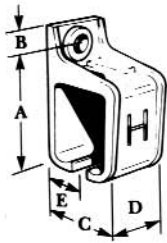
All dimensions in mm



All brackets are aluminium alloy die castings except where indicated with a suffix/S (eg 1/301/S) which are zinc plated steel. Fit closed brackets with end-clip at track ends. Joining brackets are required at each track joint. Maximum bracket spacing is every 900mm.

**BRACKETS - FACE FIXED**

**BRACKETS - SOFFIT FIXED**



**No. 1 or 1A**

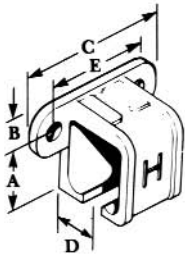
Cat No.	A	B	C	D	E	Bolt
1A/290	67	13	52	32	27	M8
1A/290/S	75	13	55	60	27	M8
1A/301	97	19	73	57	35	M12
1/301/S	95	16	69	60	37	M12
1A/305	140	25	85	76	38	M16
1/307/S	159	24	91	75	45	M16



Bracket End Clips, 1A/290 EC and 1A/301 EC. For converting brackets No.s 1, 1A, 3A, 4A, 5, 5AA & 6/301 to closed brackets in the 290, 301 & 301H formats

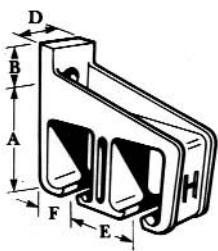


1/301/S steel bracket is fully compatible with previous design and also accepts the 1A/301 EC End Clips.



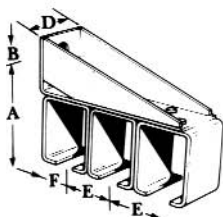
**No. 9 or 9A**

Cat No.	A	B	C	D	E	Bolt
9A/290	43	16	70	24	51	HG Screw
9A/301	65	12	125	38	89	HG Screw
9A/305	84	38	160	59	130	M12
9/307/S	84	50	184	69	140	M16



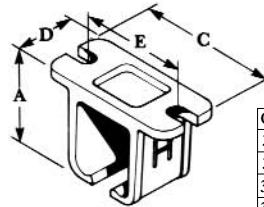
**No. 5**

Cat No.	A	B	D	E	F	Bolt
5/290	80	20	38	54	27	M12
5/301	110	33	57	79	39	M16
5/305	155	38	75	92	48	M20
5/307/S	192	26	102	91	45	M20



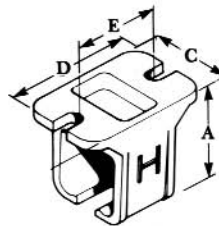
**No. 7**

Cat No.	A	B	D	E	F	Bolt
7/301/S	116	38	60	66	40	M16



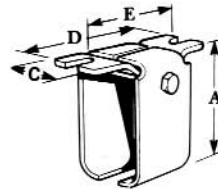
**No. 3 or 3A**

Cat No.	A	B	C	D	E	Bolt
3A/290	56	-	83	32	64	M8
3A/301	86	-	130	57	100	M12
3/301/S	88	-	130	57	97	M12
3A/305	121	-	168	75	125	M16
3/307/S	158	-	184	90	140	M16



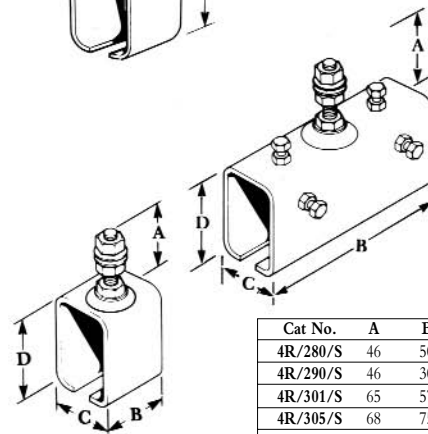
**No. 4 or 4A**

Cat No.	A	B	C	D	E	Bolt
4A/290	67	-	48	75	60	M8
4A/301	95	-	75	117	95	M12
4A/305	137	-	83	190	130	M16
4/307/S	158	-	91	84	140	M16



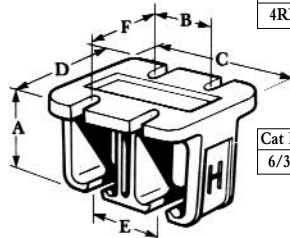
**No. 4/301/S**

Cat No.	A	B	C	D	E	Bolt
4/301/S	94	-	45	117	95	M12



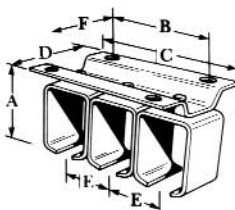
**No. 4R**

Cat No.	A	B	C	D	Bolt
4R/280/S	46	50	35	35	M10
4R/290/S	46	30	44	53	M10
4R/301/S	65	57	65	78	M12
4R/305/S	68	75	71	107	5/8 Whit
4R/307/S	72	75	91	134	M20
4RX/301TS	70	145	64	70	M12



**No. 6**

Cat No.	A	B & E	C	D	F	Bolt
6/301	95	79	152	127	92	M10



**No. 8**

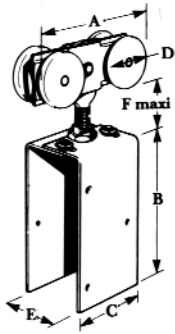
Cat No.	A	B	C	D	E	F	Bolt
8/301/S	98	127	178	118	66	92	M12

All dimensions in mm

/N = Nylon Wheels /S = Steel Wheels

Nylon wheels are quieter and avoid the need to grease track to reduce wear. Hence their carrying capacity is greater. For automatic doors halve the carrying capacity and use nylon wheels if possible.

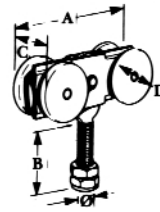
N.B. Door weight capacities are for a pair of hangers.



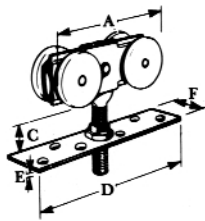
### No.53 WOOD DOORS

Track No.	Hanger No.	Dimensions						Door weight Capacity
		A	B	C	D	E	F	
290	53K/N	87	95	57	37	35-48	30	150Kg
	53K/S							150Kg
	53K/S 200							200Kg
301	53A/S	142	178	76	56	43-57	70	300Kg
	53A/N							400Kg
301H	53A/S	142	178	76	56	43-57	71	360Kg
	53A/N							450Kg
305	53C/S	161	178	76	75	43-57	71	700Kg
307	53FJ/S	215	390	65	88	60	94	2000Kg

### No.56 METAL DOORS



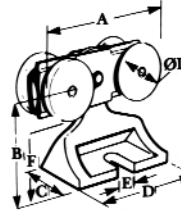
Track No.	Hanger No.	Dimensions					Door weight Capacity
		A	B	C	D	ø	
290	56K/N	87	32	27	37	10	150Kg
	56K/S						150Kg
	56K/S 200						200Kg
301	56A/S	142	70	42	56	16	300Kg
	56A/N						400Kg
301H	56A/S	142	70	42	56	16	360Kg
	56A/N						450Kg
305	56C/S	161	70	42	75	16	700Kg
307	56FJ/S	215	86	55	88	20	2000Kg



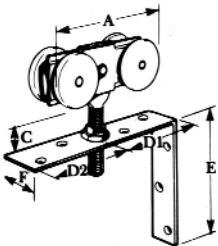
### No.57 WOOD DOORS

Track No.	Hanger No.	Dimensions						Door weight Capacity
		A	C	D	E	F		
290	57K/N	87	31	140	5	25	150Kg	
	57K/S 200						200Kg	
								300Kg
301	57A/S	142	57	184	6	38	300Kg	
301H	57A/N	142	57	184	6	38	450Kg	
305	57C/S	161	61	184	6	38	700Kg	

### No.56F FIRE DOORS



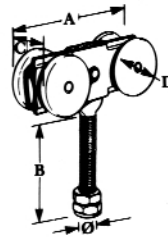
Track No.	Hanger No.	Dimensions							Door weight Capacity
		A	B	C	D	øD	E	F	
301	56AF/S	142	81	45	83	56	17	53	300Kg
301H	56AF/S	142	81	45	83	56	17	53	360Kg
305	56CF/S	161	89	45	83	75	17	51	700Kg



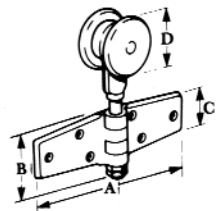
### No.52 WOOD DOORS

Track No.	Hanger No.	Dimensions						Door weight Capacity
		A	C	D1	D2	E	F	
290	52K/N	87	31	77	51	134	25	150Kg
	52K/S							150Kg
	52K/S 200							200Kg
301	52A/S	142	57	102	127	165	38	300Kg
301H	52A/N	142	57	102	127	165	38	450Kg
305	52C/S	161	61	102	127	165	38	700Kg

### No.56X METAL DOORS



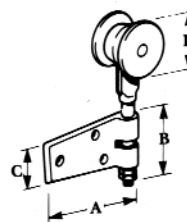
Track No.	Hanger No.	Dimensions					Door weight Capacity
		A	B	C	D	ø	
290	56KX/N	87	110	27	37	10	150Kg
	56KX/S						200Kg
301	56AX/S	142	146	42	56	16	300Kg
	56AX/N						400Kg
301H	56AX/S	142	146	42	56	16	360Kg
	56AX/N						450Kg
305	56CX/S	161	146	42	75	16	700Kg
307	56FJX/S	215	140	55	88	20	2000Kg



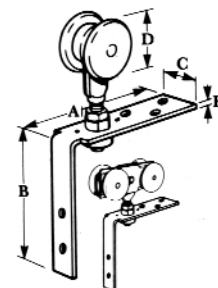
### No.62 FOLDING DOORS

Track No.	Hanger No.	Dimensions			
		A	B	C	D
290	62K	180	77	45	37
301	62A	180	77	45	56
301H					
305	62C	540	104	51	75

### No.63 FOLDING DOORS



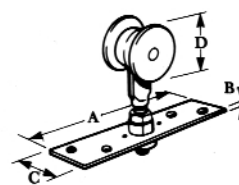
Track No.	Hanger No.	Dimensions			
		A	B	C	D
290	63K	90	77	45	37
301	63A	90	77	45	56
301H					
305	63C	203	104	51	75



### No.21 FOLDING DOORS

Track No.	Hanger No.	Dimensions					
		A	B	C	D	E	
290	21K/S	153	153	25	37	5	
	21K/N						
	21K/4N						
301	21A/S	178	153	38	56	6	
301H	21A/4S						
305	21C/S	178	153	38	56	6	

### No.61 FOLDING DOORS

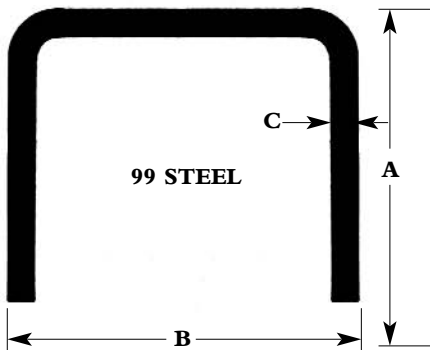
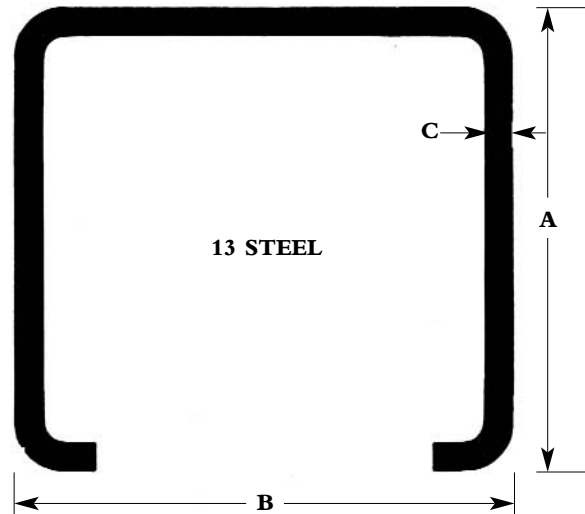
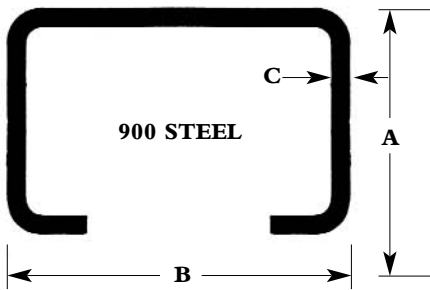
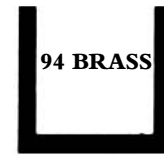
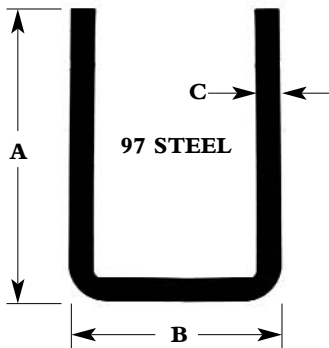


Track No.	Hanger No.	Dimensions			
		A	B	C	D
290	61K/S	140	5	25	37
301	61A/S	184	6	38	56
301H					
305	61C/S	184	6	38	75

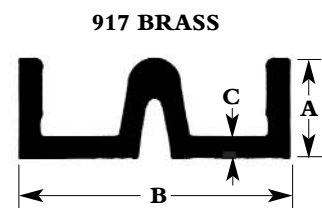
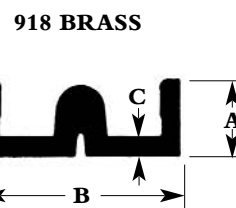
All dimensions in mm

GUIDE  
CHANNELS

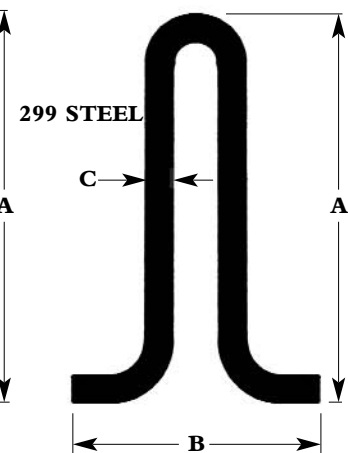
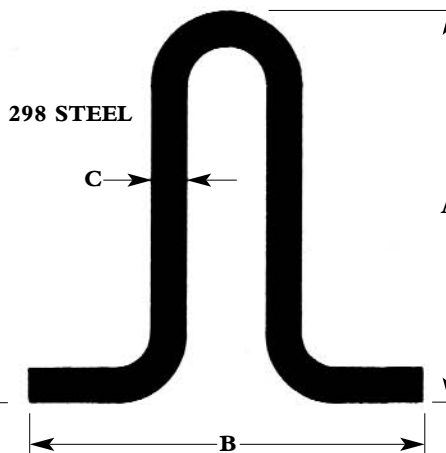
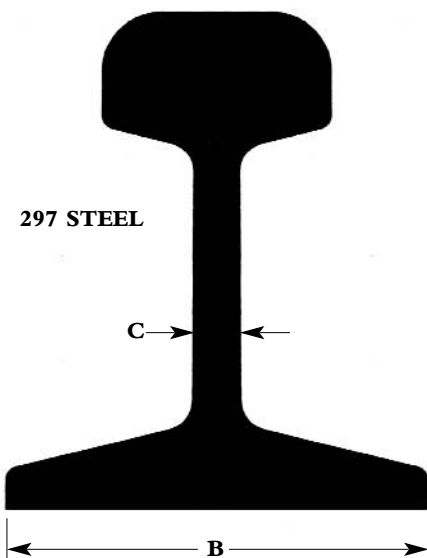
(mm)	89	94	97	100	900	99	13	917	918	297	298	299
A	25	20	38	27	29	38	60	13	10	65	51	51
B	24	21	27	27	45	46	65	35	25	55	51	32
C	3	1.5	3	3	2	3	3	2	2	7	4	3



For bracket specifications see Technical Data Sheets  
FULL SIZE SECTIONS

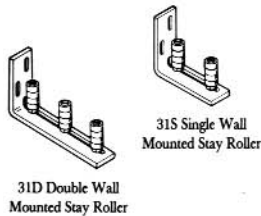


FLOOR RAILS



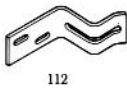
All dimensions in mm

### GUIDES



31D Double Wall Mounted Stay Roller

31S Single Wall Mounted Stay Roller



112

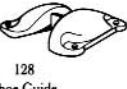


126HD/A Ground Stay Roller

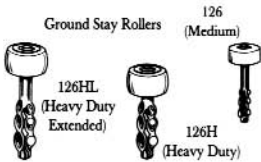


89

299



128 Shoe Guide



126HL (Heavy Duty Extended)

126H (Heavy Duty)

126 (Medium)



102



105R



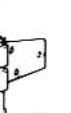
113R



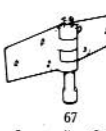
106R



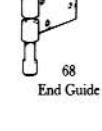
104P



104PX



67



68



End Fold Guide 21R



Centre Fold Guide 106R/94

**No. 31S Single Wall Mounted Stay Roller (Biparting doors)** - Provides clear threshold - fit No. 128 shoe guide with centre stop. Nylon Rollers, galv. steel angle.

**No. 31D Double Wall Mounted Stay Roller (Double line)** - Provides clear threshold - Nylon Rollers, galv. steel angle.

**No. 126HD/A Ground Stay Roller** - Provides clear threshold - Rollers covered by shields to prevent traffic damage. galv. steel angle.

**No. 112 Stop Guide** - Binds door to frame in closed position. Slotted for padlock and hasp.

**No. 128 Shoe Guide with Centre Stop** - Zinc plated iron, adjustable, centre stop plate provided, for biparting doors.

**No. 299 Curtailed Rail with Inverted No.89 Channel to underside of doors** - Provides clear threshold - fit No.128 shoe guide with centre stop on biparting doors.

**No. 126 Ground Stay Roller** - Provides clear threshold - fit No.128 shoe guide with centre stop on biparting doors. Galv. Steel

Most roller guides are fitted with brass rollers. The assemblies are rustproofed by electrozinc galvanising. Fit two guides per door. Always specify channel type when ordering guides (eg104P/97)

**No. 102 Side Guide Roller** - Heavy duty plough guide, ideal for most applications. Malleable body with self adjusting roller spindle. Use with channels No.s 97 or 100.

**No. 105R Roller Guide** - General purpose guide suitable for most applications. Is economical yet very strong. Use with channels No.s 89, 97 or 100.

**No. 106R Roller Guide** - Galvanised steel plate with a brass roller. Ideal for small, light doors especially internal applications. Not recommended for dirty conditions. Use with channels No.s 89, 97 or 100.

**No. 113R Slide Guide Roller** - Galvanised steel plate with a brass roller. Not recommended for heavy doors or dirty conditions. Use with channels No.s 89 or 94.

**No. 104P Under Guide Roller** - Brass roller used for metal doors. Easily removable without dismantling doors. Use with channels No.s 89, 97 or 100.

**No. 104PX Long Under Guide Roller** - Same a 104P but with extra long bolt.

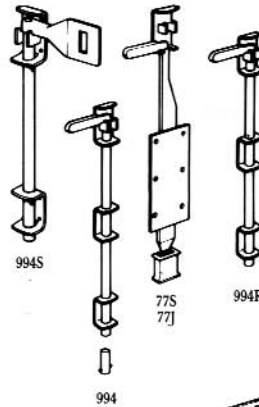
**No. 67 Intermediate Guide - Round-the-Corner and Folding Doors.**  
No. 67/89 for track 290 and channel 89.  
No. 67/97 for track 301 or 301H and channel 97.  
No. 67C/97 for track 305 and channel 97.

**No. 68 End Guide - Round-the-Corner and Folding Doors.**  
No. 68/89 for track 290 and channel 89.  
No. 68/97 for track 301 or 301H and channel 97.  
No. 68C/97 for track 305 and channel 97.

**No. 21R End Fold Guide - Folding Doors.**  
No. 21KR/94 for track 290 and channel 94.  
No. 21R/94 for track 301, 301H and 305

**No. 106R Centre Fold Guide - Folding Doors.**  
No. 106R/94 for all tracks.

### DOOR FURNITURE



994S

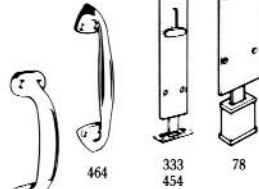
994X

994R

994

77S

77J



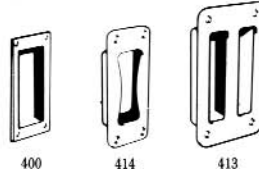
863

463

333

454

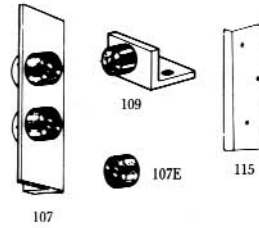
78



400

414

413

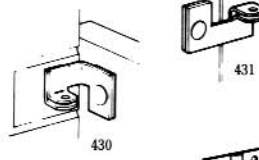


107

109

107E

115



430

431



Back Flap Hinge 65

Butt Hinge

**No. 994 Bolt** - Electro galvanised steel shoot and guides with socket for concrete, when required.

**No. 994X Offset Bolt** - Zinc galvanised steel shoot and guides with socket for concrete.

**No. 994R Roller Guide Bolt** - Electro galvanised steel shoot and guides with brass roller. Use with channel No.s 89 or 97.

**No. 994S locking Bolt** - Electro galvanised steel shoot and guides with socket for concrete. Use with Padlock (Not by PCH).

**No. 77 Flush Bolt** - No.77J suitable for framed doors with bottom rails up to 152x48. Zinc plated steel. No.77S suitable for framed doors with bottom rails up to 236x70. Zinc plated steel.

**No. 78 Flush Bolt** - Designed for fitting to stile of flush doors minimum 127x45. Zinc plated steel.

**No. 333 Semi Flush Bolt** - 152x35 Aluminium alloy in satin anodised finish.

**No. 454 Semi Flush Bolt** - 190x41 Aluminium alloy in satin anodised finish.

**No. 863 Bow Handle** - Zinc plated cast iron. 133x43

**No. 463 Bow Handle** - Zinc plated cast iron. 159x46

**No. 464 Bow Handle** - Zinc plated cast iron. 261x62

**No. 400 Flush Pull** - Aluminium alloy in satin anodised finish 108x48 with 17 mortise.

**No. 414 Flush Pull** - Aluminium self finish 133x60 with 20 mortise.

**Flush Pull No.401P** - White polypropylene 90x38mm with 13mm mortise.

**No. 413 Flush Pull** - Heavy duty Zinc plated cast iron 152x95 with 26 mortise.

**Flush Pull No.26P** - White polypropylene n.b. Drill 31mm hole.

**No.115 Corner Protection Plates** - Rustproofed by electrozinc plating - Fit a pair on the leading door edge where door meets door stop.

**No.109 Single Wall or Ground Stop** - Zinc plated steel with rubber buffer. For light doors. Fit on wall, 2/3 up door height.

**No.103 Single Floor Stop** - Satin anodised aluminium with rubber buffer. For heavier domestic internal doors.

**No.110N Door Stop** - White nylon complete with rubber buffer. For light interior doors. (Wall or floor fixed.)

**No.28P/1 Door Stop** - White nylon for light cupboard and wardrobe doors.

**No.107E Buffer Stop Rubber** - For fitting to slamming post when other stops cannot be used.

**No.107 Double Wall Stop** - Zinc plated steel with rubber buffers. For medium weight doors, fit one on wall, 2/3 up door height. For heavier door fit 2.

**No.431 Swivel Locking Bar** - Rustproofed by Zinc plating. For meeting doors sliding on outside face of wall or for securing to end post. Use with padlock (not by PCH).

**No.430 Detachable Locking Bar** - Rustproofed by Zinc plating. For straight run doors sliding inside and locked outside. Use with padlock (not by PCH).

**No.65 Back Flap Hinges** - No.65 for track 290, 301 or 301H. Aluminium No.65C track 305. Zinc plated.

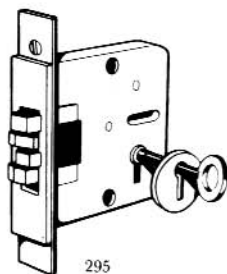
**No.403 Butt Hinge** - No.403/1 89x50 aluminium alloy.  
No.403/2 100x55 aluminium alloy.  
No.403/3 100x75 aluminium alloy.

Also available in steel to similar sizes and referred to as No.37, No.41, No.42 respectively.



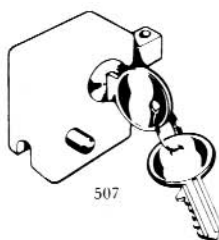
**Rim Cylinder Lock No. 444**

Five pin tumbler action with long body (keyhole 60mm from jamb) enables door to overlap jamb by 25/38mm. Keyhole plate in B.M.A. finish. Supplied with two keys. To differ only.



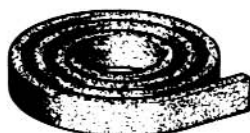
**Sliding Door Mortise Dead Lock No.295**

For light interior sliding doors. Claw action with brass striker plate and claws in unrebated from only - supplied with two keys. suits minimum stile 102x35mm



**'Zenith' Cylinder Lock No.507 - C.P.**

Fitted to 'zenith' glass rail panels. Shoot enters second bottom rail of double passing doors. 2 keys. handed: state hand. Left-hand illustrated



**Sponge Neoprene Sealing Strip No.537**

22x6mm available in any length - supplied in rolls.