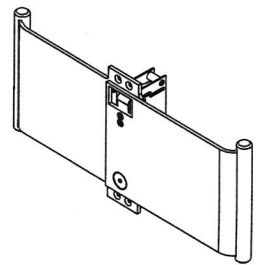
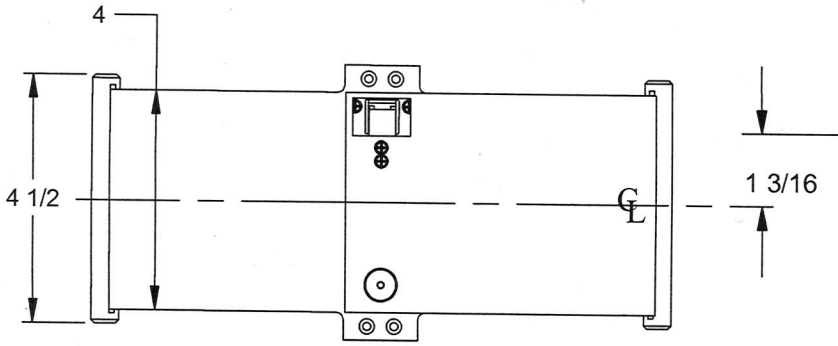


INSTALLATION INSTRUCTIONS:

1. PREPARE DOOR AND FRAME AS INDICATED ON SHEET 2 OR 3 DEPENDING UPON DOOR THICKNESS.
(STRIKE PREPARATION IS THE SAME REGARDLESS)
2. INSERT DOOR PULL AND INSTALL USING QUANTITY FOUR (4) #8X1-5/8" FH PH DRYWALL SCREWS (SUPPLIED)
3. INSTALL STRIKE USING TWO (2) #8X3/4" FH WS (SUPPLIED) THEN TEST UNIT.

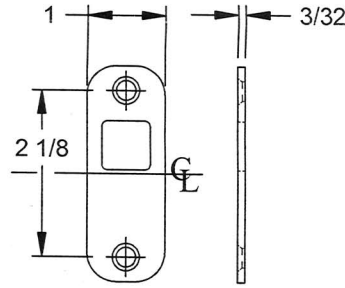


LH SHOWN



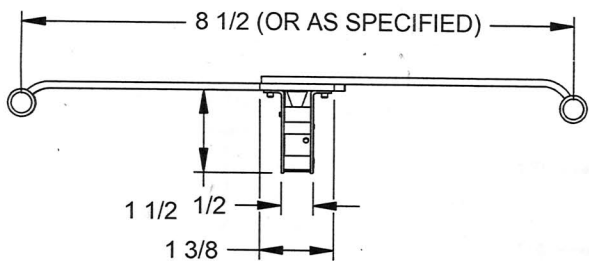
EXTERIOR (RIGID)

INTERIOR (LATCHING)



STRIKE

1069FP POCKET DOOR PULL



SHEET 2 OF 3 DOOR PREP FOR 1-3/8" WOOD DOOR
 SHEET 3 OF 3 DOOR PREP FOR 1-3/4" WOOD DOOR AND WIDER