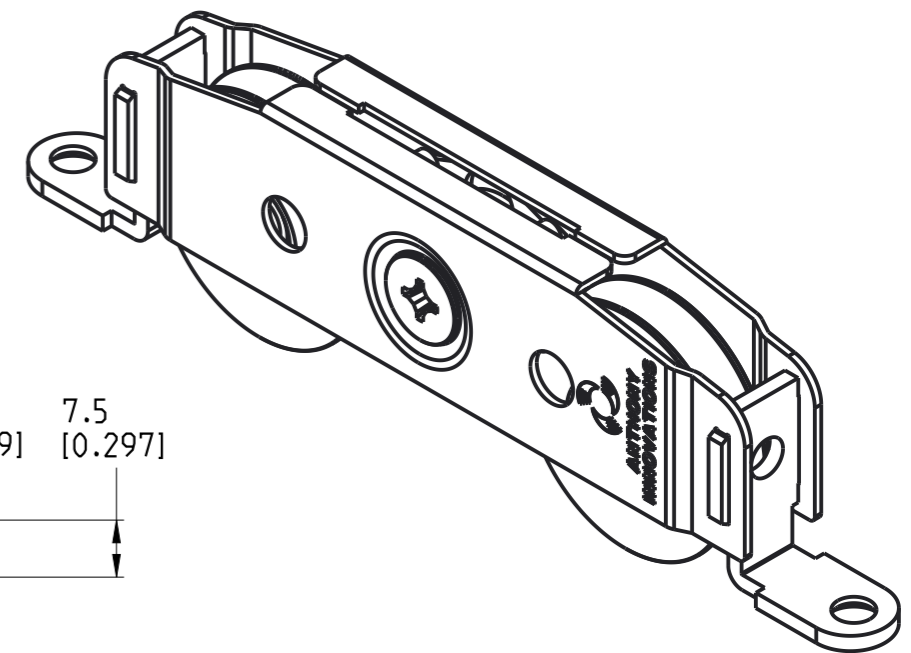
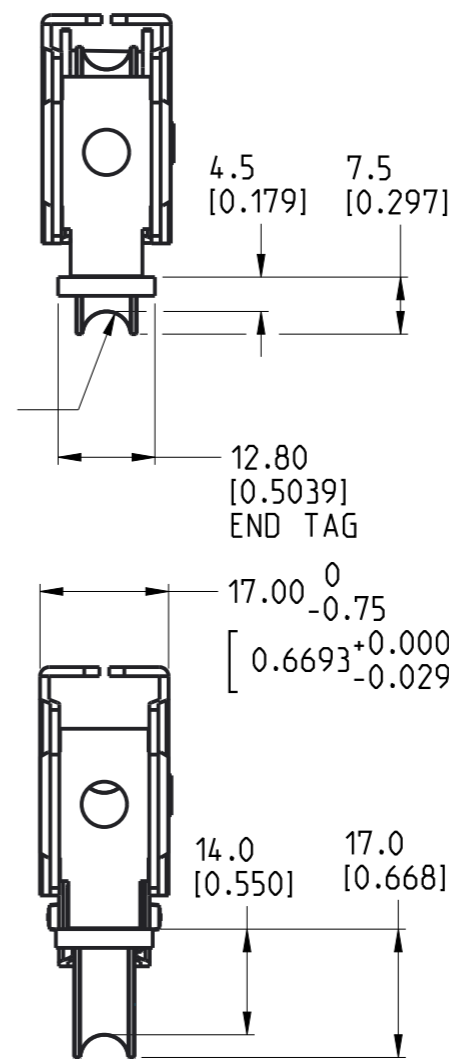


R3.20^{+0.10}₀
[0.1260^{+0.0039}_{-0.0000}]



INNER AND OUTER CARRIAGE 1.2mm
END TAGS 2.2mm

ADJUSTMENT SCREW, BUSH
AND AXLES MADE FROM
303 STAINLESS STEEL.

PRECISION BEARINGS

ISO 492:2002
NORMAL TOLERANCE CLASS

ALL PLASTIC PARTS
ACETAL

CUSTOMER SIGNATURE REQUIRED FOR PRODUCTION APPROVAL & ACCEPTANCE
OF THE ANTHONY GROUP'S TERMS & CONDITIONS OF SALE
(DESIGN CHANGES SUBSEQUENT TO THIS SIGNATURE MAY BE AT COST TO THE CUSTOMER)

SIGNED:.....DATE:.....

THIS DOCUMENT IS THE PROPERTY OF ANTHONY INNOVATIONS PTY. LTD.
IT IS STRICTLY CONFIDENTIAL AND SUBJECT TO RETURN UPON REQUEST.
IT MUST NOT BE TRACED, COPIED OR EXHIBITED WITHOUT WRITTEN PERMISSION.

PART NUMBER	CARRIAGE MATERIAL	BEARING MATERIAL	TYRE MATERIAL	LOAD RATING
SS7203DSPA	STAINLESS STEEL	STAINLESS STEEL	ACETAL	100kg (220lb)
SS7203DSGA	STAINLESS STEEL	STAINLESS STEEL	STAINLESS STEEL	100kg (220lb)
DRAWN TO AS1100		DO NOT SCALE	UNSPECIFIED TOLERANCES ± 0.25	
25JUL16	-	AB	DJJ	DJJ
RELEASED FOR CUSTOMER APPROVAL				
DATE	ECR No.	DRN	CKD	AUTH
REVISION				
DESC. DUAL WHEEL ROLLER				REVISION

DESC.	DUAL WHEEL ROLLER	DRAWING No.	1078768	REVISION	-
ANTHONY INNOVATIONS PTY LTD		ASSEM No.	SS7203DSXA	CA1	
A MEMBER OF THE ANTHONY GROUP		DRAWING NAME	1078768 REV. 1.4	A3	
68 KEON PARADE THOMASTOWN, 3074 MELBOURNE, AUSTRALIA		3D MODEL NAME	1078768 REV. 1.5		
www.anthonyinnovations.com.au TEL: +61 (03) 9460 1166 ABN 76004325026		DOC No.	19H	COPYRIGHT 2016 - ANTHONY INNOVATIONS ©	

3RD ANGLE PROJECTION



DIMENSIONS IN MILLIMETRES

FINISH	-	COLOR	-
MATL	SEE NOTES		
WEIGHT	-	MODIFIED BY	Ava Bashirzadeh
SCALE	1:1	CREATED BY	Ava Bashirzadeh
SHEET	1 OF 1	RELEASED BY	Derek Jefferson
		25-Aug-16 11:22:52 AM	
		25-Jul-16 01:01:29 PM	
		25-Jul-16 04:30:00 PM	