

LOW HEADROOM INSTALLATION KIT

FOR TIMBER SLIDING DOORS UP TO 100kg

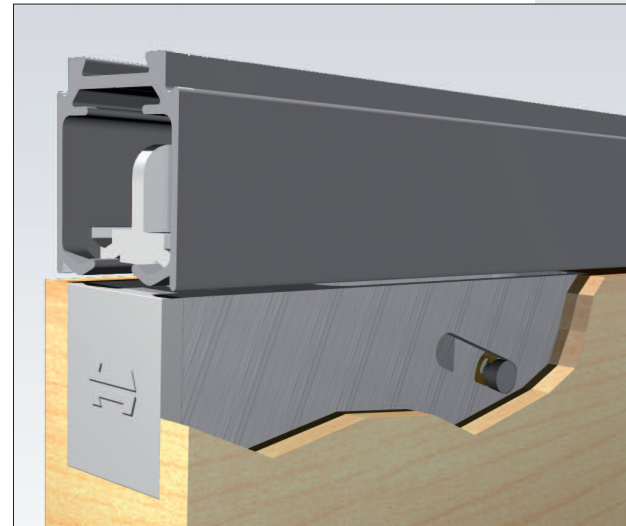
APPLICATIONS

- ▶ Designed to create a modern minimalist finish with all parts concealed.
- ▶ Can reduce the clearance between the track and the top of the door to 2mm.
- ▶ Vertically adjustable sliding door kit for low or restricted headroom applications.
- ▶ Used to maximise door height.
- ▶ Engineered for easy installation and adjustment.

DOOR SPECIFICATION

For individual door leaves:

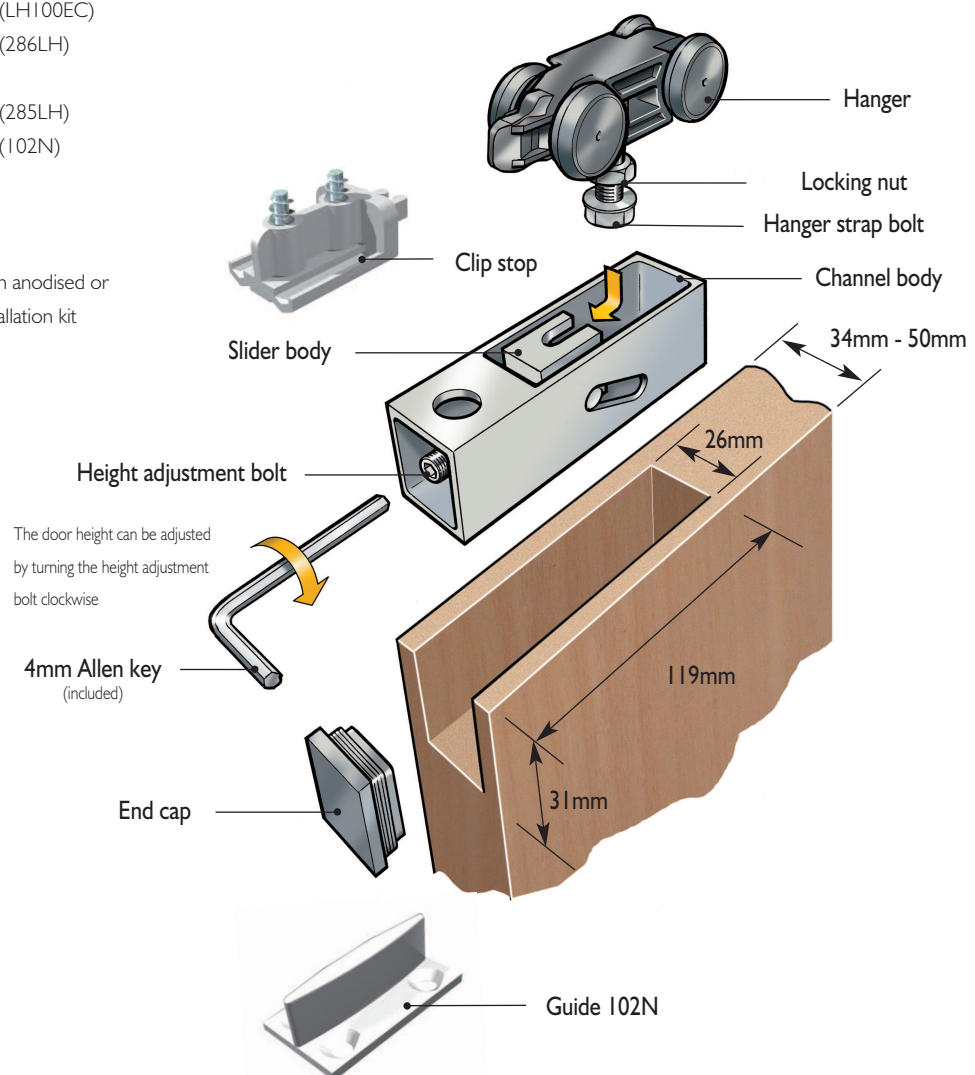
Maximum leaf weight	100kg
Maximum door width	1250mm
Maximum door height	2700mm
Door thickness	34-50mm
Door material	Timber



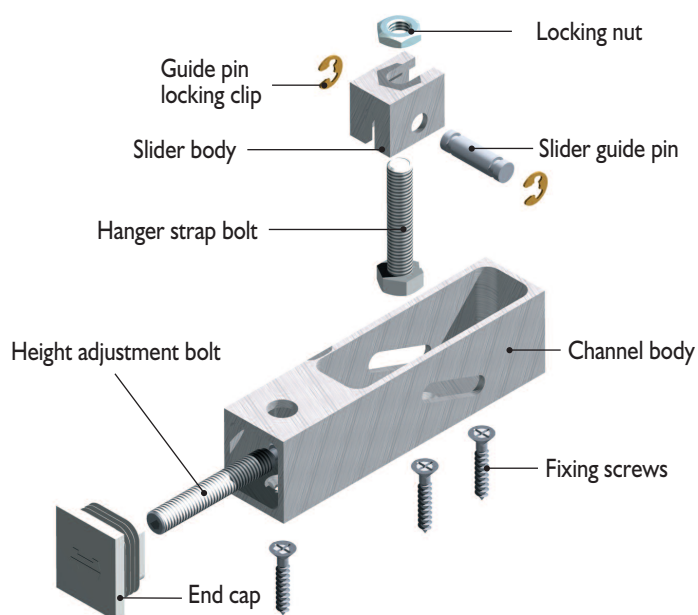
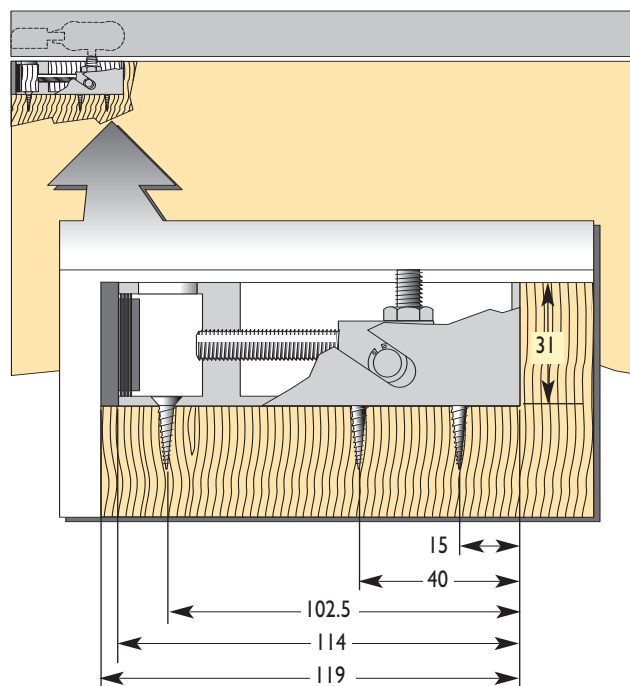
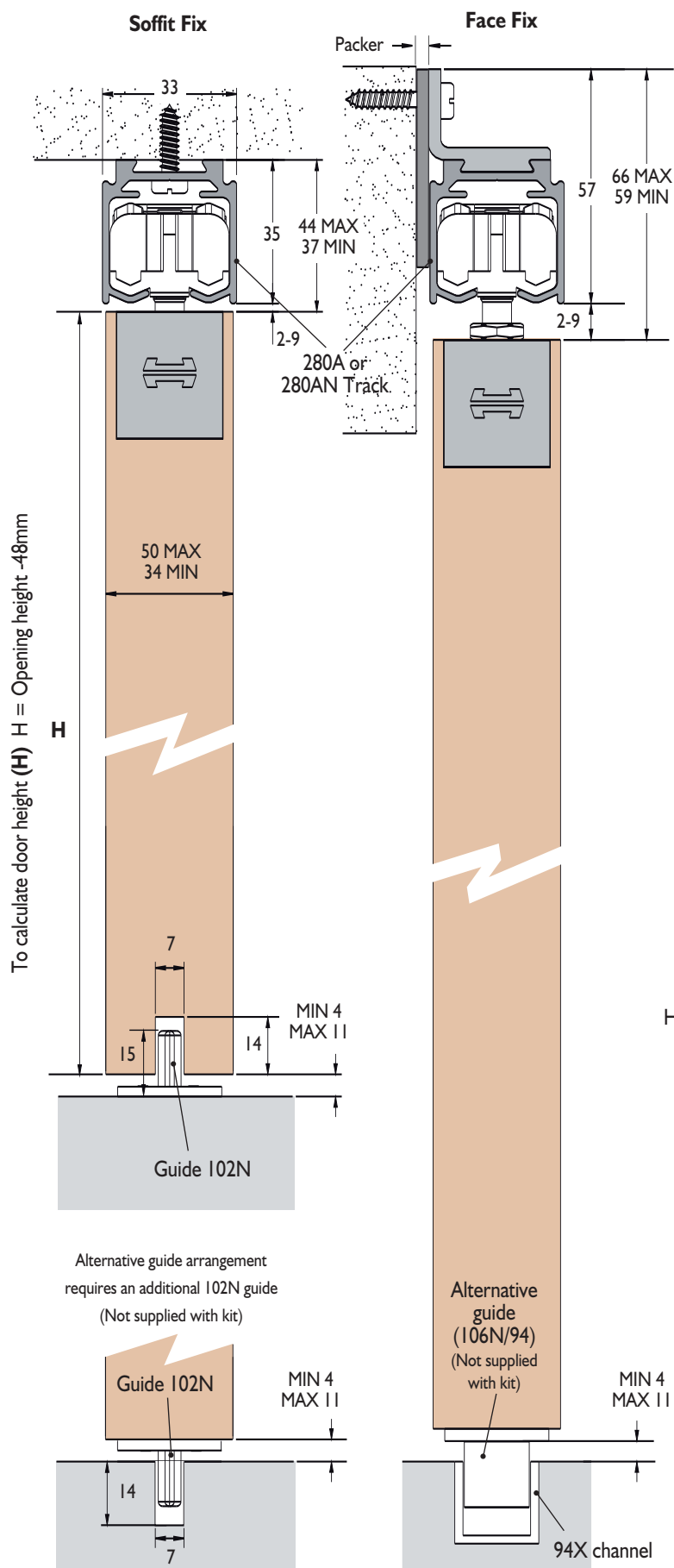
LH100 INSTALLATION KIT INCLUDES: (1 kit per door)

2 Low Headroom units	(LH100C)
2 End caps	(LH100EC)
2 Low Headroom clip stops	(286LH)
1 Screw pack	
2 Low Headroom hangers	(285LH)
1 Guide	(102N)
1 Spanner	
1 Allen Key	

*Aluminium Husky track (available in anodised or mill finish) is not included in the installation kit and must be ordered separately



LOW HEADROOM INSTALLATION KIT



- Notes:
1. Low Headroom unit comes preassembled
 2. For double or multiple doors, tracks can be fitted side by side
 3. All dimensions in mm's

HENDERSON

P C Henderson Limited, Durham Road, Bowburn, County Durham DH6 5NG, UK. Web: www.pchenderson.com
 UK Customer Services Department: Tel: +44 (0)191 377 7345 Fax: +44 (0)191 377 3116 Email: sales@pchenderson.com
 Export Department: Tel: +44 (0)191 377 7346 Fax: +44 (0)191 377 0755. Email: international@pchenderson.com.
 For all technical queries email our Technical Department: technical@pchenderson.com