

Architectural Door Accessories

ASSA ABLOY

Pemko CS-0003 Cushion Stop Stainless Steel Sliding Track Hardware System

The global leader in
door opening solutions

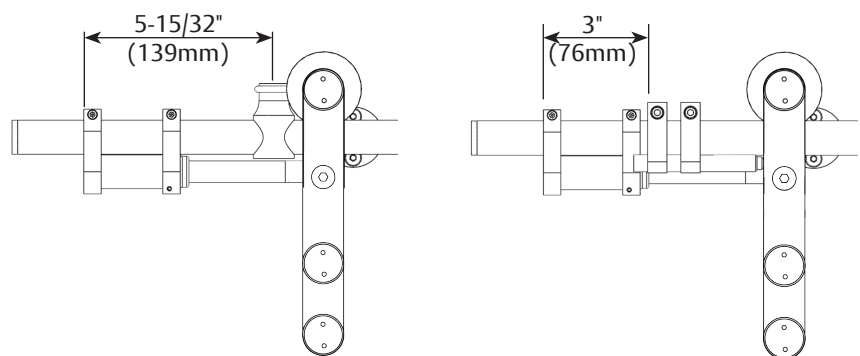
Patent Pending

WARNING: DO NOT LEAVE DOOR UNATTENDED AT ANY POINT DURING INSTALLATION!

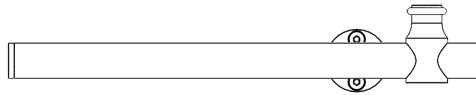
Required Tools:

- 9/64 Hex Key / Allen Wrench
- Torque Wrench
- Manufacturer supplied tools
- 4mm Hex Key / Allen Wrench
- Spanner Wrench

Stop Placement Calculation

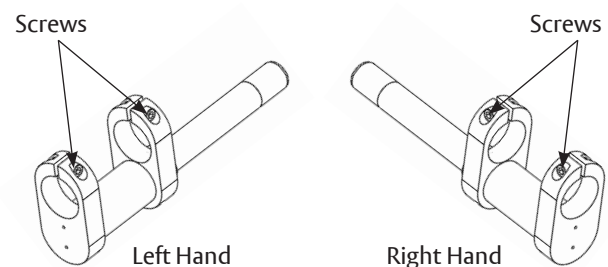


**If stop is inside a wall bracket,
the bar must be removed.**



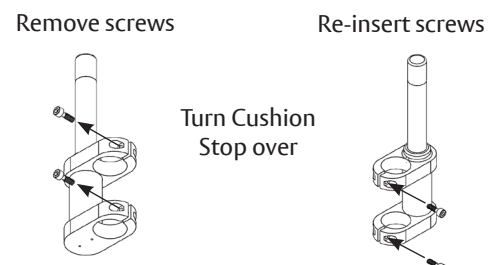
1. Verify handing.

Ensure screws on Cushion Stop are facing outward as shown.



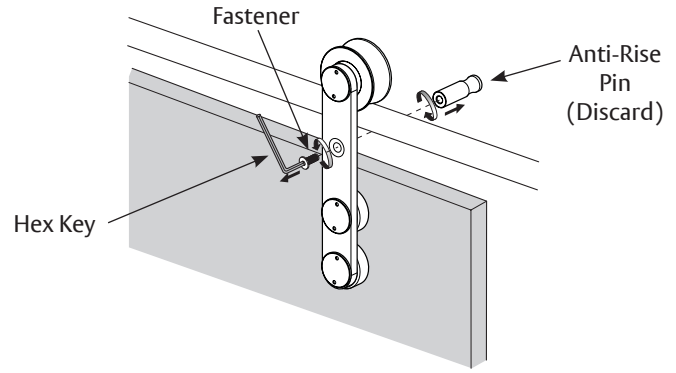
1a. Correct handing (as needed).

If handing varies from Step 1, remove screws from Cushion Stop, turn Cushion Stop over and re-insert screws.



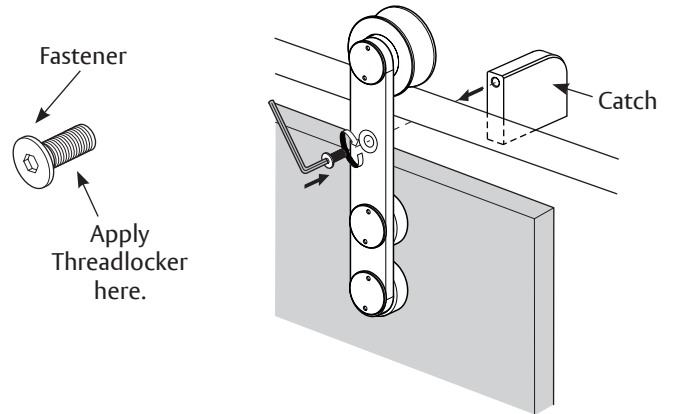
2. Remove Anti-Rise Pin.

Remove currently installed Anti-Rise Pin from the hanger. Use either a spanner wrench, a 4mm hex key/ allen wrench or any other manufacturer supplied tool (depending on the hanger or manufacturer). Hold the Anti-Rise Pin and use appropriate tool to remove the fastener and Anti-Rise Pin from the hanger.



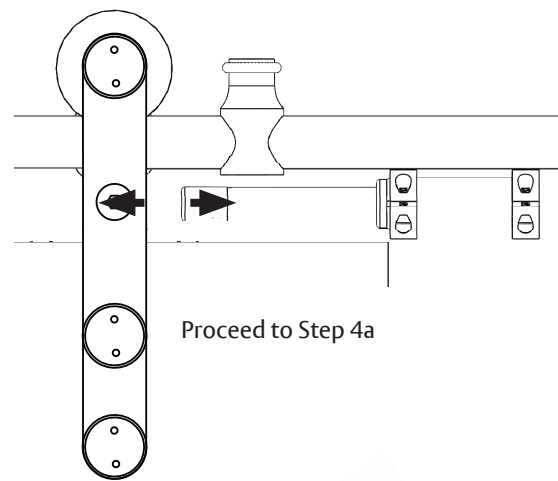
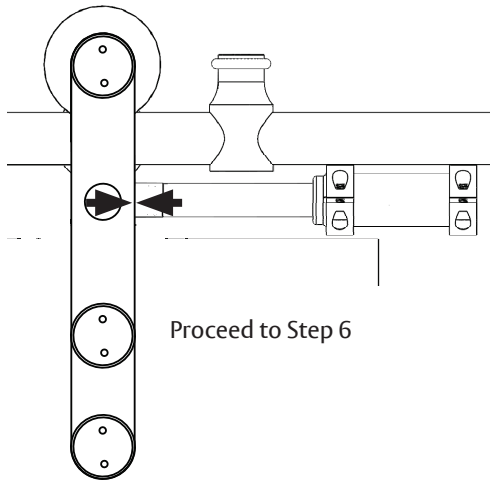
3. Install Catch.

Apply threadlocker (supplied) to threads of fastener. Place catch behind hanger and tighten fastener to catch with appropriate tools.



4. Check polarity of Cushion Stop.

Turn top of Cushion Stop toward you. Place end of stop against catch. If magnet in Cushion Stop connects (“snaps”) to catch, proceed to Step 6. If magnet in Cushion Stop repels from catch, proceed to Step 4a.



4a. Correct polarity of Cushion Stop (as needed).

1. Unscrew cap from Cushion Stop. Be careful not to drop the magnet contained in the cap.
2. Flip magnet and re-insert into cap.
3. Screw cap back onto Cushion Stop.



ASSA ABLOY

The global leader in
door opening solutions

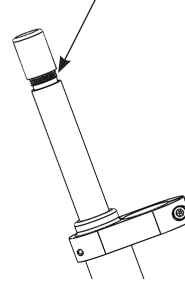
5. Verify polarity of Cushion Stop.

Check that Cushion Stop and catch now “snap” together. If necessary, repeat Step 4a.

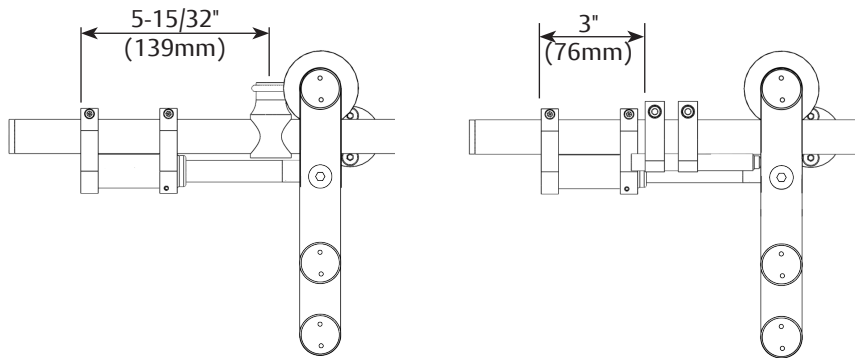
6. Apply Threadlocker.

1. Expose half of the threads beneath the cap and apply threadlocker (supplied) to the exposed threads.
2. Finger tighten cap onto Cushion Stop.
3. Wipe clean any excess threadlocker and allow to setup for 5-10 minutes.

Apply Threadlocker here.



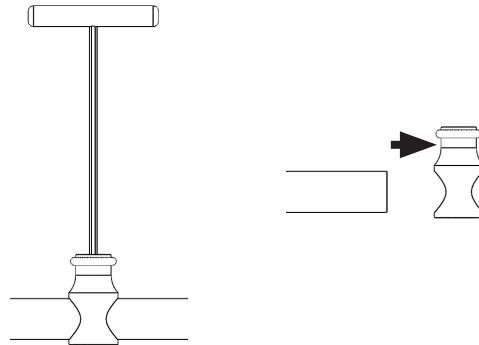
Stop Placement Calculation



7. Remove existing Stop.

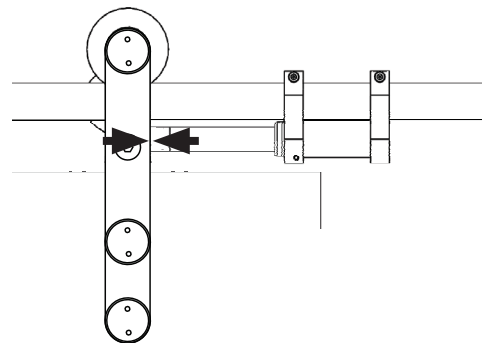
Using either 4mm hex key/allen wrench or manufacturer supplied tools, remove existing stop.

IMMEDIATELY PROCEED TO STEP 8!
Once existing stop is removed, the door can roll off the track possibly causing injury.



8. Install Cushion Stop.

After allowing threadlocker time to setup (5-10 minutes), install Cushion Stop onto rod and slide until it “snaps” to the catch. If Cushion Stop and catch do not connect, refer to Step 4a.

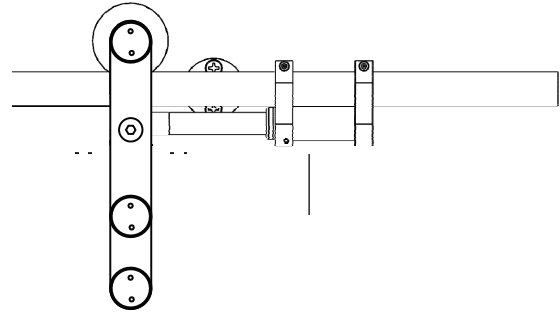


ASSA ABLOY

The global leader in
door opening solutions

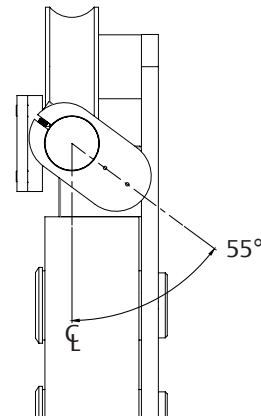
8a. Position Cushion Stop.

With Cushion Stop still attached to catch, slide door to desired location. When positioning stop, ensure that any hardware that protrudes from door will not collide with opening during normal operation of the stop.



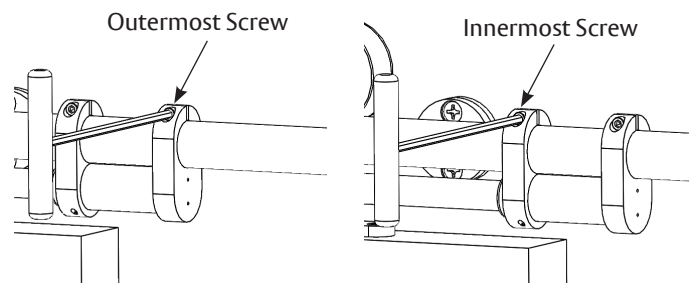
8b. Align Cushion Stop.

Once door is in correct location, ensure that stop is in contact with the catch at about a 55° angle.



8c. Tighten Fasteners.

With Cushion Stop in correct position (See Step 8b), tighten outermost screw and then tighten innermost screw using a 9/64 hex key/allen wrench. Tighten to a torque rating of 55 in-lbs.



9. Install Additional Cushion Stops.

Repeat steps as needed to install additional Cushion Stops.