

STRAIGHT SLIDING STERLING 225

E A C H D O O R W E I G H T M A X 2 2 5 k g

APPLICATION

- ▶ Sterling gear is designed for a wide range of domestic, commercial and industrial applications.
- ▶ The bottom roller design is suited to applications where the supporting structure or lintel is insufficient for the weight of the door, or where headroom is limited.
- ▶ The top guide channel may be soffit fixed or face fixed.
- ▶ To cover any width of opening, any number of doors can be used on single or multiple lines of track.
- ▶ To accommodate different building designs, doors can slide to one or both sides.
- ▶ Wicket doors for easy access may be incorporated into a sliding door.
- ▶ Where doors are fitted externally, a canopy is recommended to protect the top guide channel and rollers.

DOOR SPECIFICATION

For individual doors:

Max Door Height	3300mm
Max Door Weight	225 kg
Door Thickness	44-50mm

For ease of operation it is recommended that the door width should be at least 50% of the door height.

Timber doors may be partly or fully glazed, or framed, ledged and braced for industrial applications, also in timber doors, rollers should be positioned in the bottom door leaf section, clear of the joint between the bottom rail and stiles.

Doors must be constructed with a deep bottom section of minimum depth 230mm.

Metal doors should be framed and braced using steel angle and clad with steel sheet. On metal doors, the rollers should be positioned securely in the bottom door frame section by welding or bolting.

The bottom rail must be set level and may be recessed for protection from traffic.

GEAR SPECIFICATION

Top Guide Channel:	900 galvanised steel with safety lip
Standard lengths:	2000mm, 2500mm and 3000mm

Top Guide Brackets:

For single track (face fixing)	1/900	pressed steel zinc plated
For single track (soffit fixing)	3/900	pressed steel zinc plated
For double track (face fixing)	5/900	pressed steel zinc plated

Fix at 900mm centres (maximum).

Top Guide Rollers (2 per door):

54/900	timber industrial applications
104/900	metal industrial applications
203/900	commercial applications

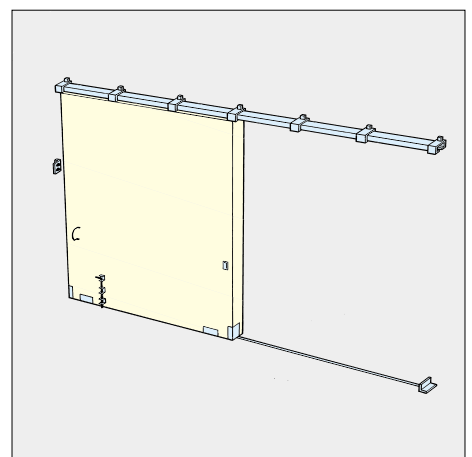
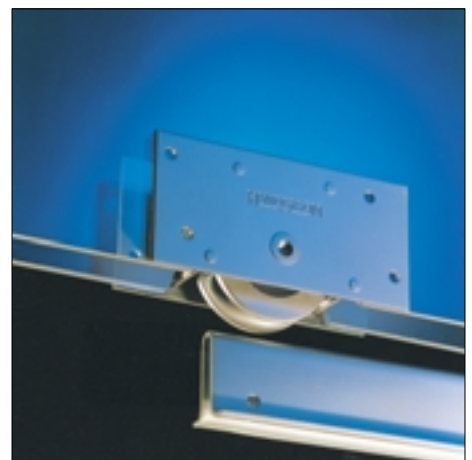
203/900 Top Guide Rollers have concealed edge fixing and double adjustable anti-rattle rollers.

Bottom Rollers (2 per door):	No. 5	for timber doors
	No. 5S	for metal doors
	No. 5SU	for metal doors (bolt on)

Sterling Bottom Roller is zinc plated and has maintenance free sealed for life roller bearing.

Bottom Rail:	299	galvanised steel
Standard Lengths:	2000mm, 2500mm and 3000mm	

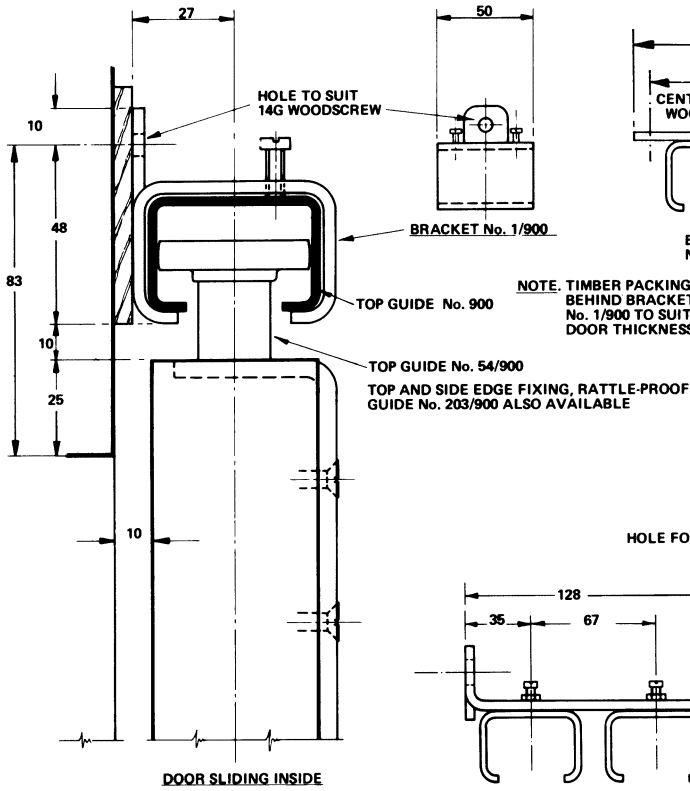
Accessories: Bow Handles, Flush Pulls, Bolts, Locks and Stops.



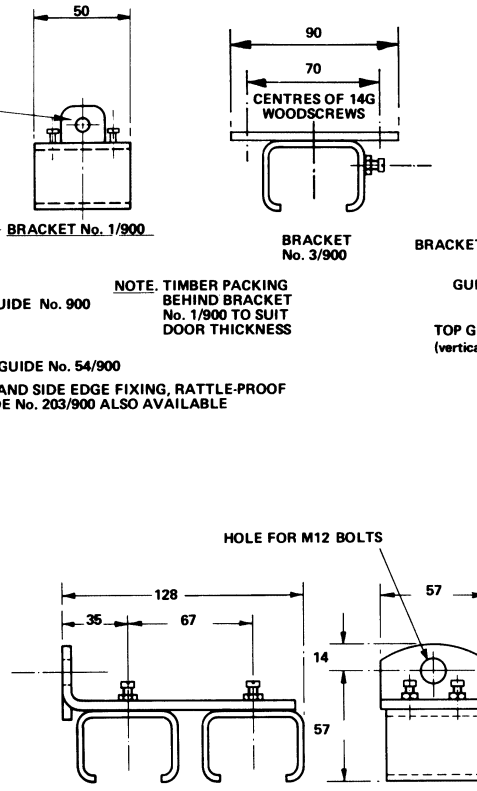
Standard Application

H
N
D
E
R
S
O
N

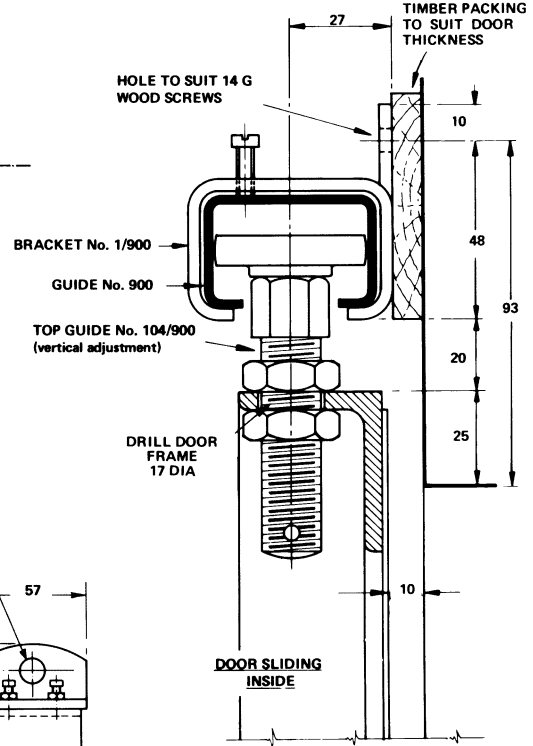
STRAIGHT SLIDING STERLING 225



SECTION SCALE 1 : 2



DOUBLE BRACKET No. 5/900



SECTION SCALE 1 : 2

