

ARCADE A70

ENDFOLD & CENTREFOLD

E A C H D O O R W E I G H T M A X 7 0 k g

APPLICATION

- ▶ Arcade high quality bottom roller gear and fittings are designed specifically for aluminium framed glazed internal retail and display applications where the weight has to be taken at floor level.
- ▶ Options of centre and end folding partitions are available. Both centre folding and end folding leaves can fold to one or both sides of the opening and end folding leaves can be stacked behind a reveal if required.
- ▶ To cover any width of opening, any number of folding units can be used.

DOOR SPECIFICATION

For individual doors:

Max Leaf Height	3600mm	
Max Leaf Weight	70 kg	
Max Leaf Width	Endfold A70	900mm
	Centrefold A70	1000mm
Door Thickness	45-47mm	

End folding units up to eight leaves can be hinged to post and floating units should consist of four, six or eight leaves.

With centre folding units up to seven full leaves and one half leaf can be hinged to post, floating units should consist of five or seven leaves.

See overleaf for leaf width calculation.

Where access is required a separate swing door should be hinged to post.

Clearance between leaves to be 2mm minimum.

Door leaves should be constructed from proprietary aluminium section rails and stiles with a glazed infill.

Refer to drawing 2769 for operating instructions.

GEAR SPECIFICATION

Top Guide Channel 900 galvanised steel with safety lip
Standard lengths: 2000mm, 2500mm and 3000mm

Top Guide Brackets:-

Soffit fixing 3/900 pressed steel zinc plated
Face fixing 1/900 pressed steel zinc plated

Fix at 600mm centres (maximum).

Fix additional bracket where folding units stack.

Top Guide Rollers : 902 concealed

Top guide rollers are fitted with adjustable nylon rollers.

Vertical adjustment is simple and positive.

Bottom Rollers : 922 concealed

Bottom rollers supported on thrust bearings

Both top guide rollers and bottom rollers are designed to suit the rebate in standard aluminium door rails.

Hinges:

It is recommended that proprietary hinges are used to suit the aluminium rails and stile used to construct the leaves.

On leaves up to 3000mm fit 3 hinges high, above 3000mm fit 4 hinges.

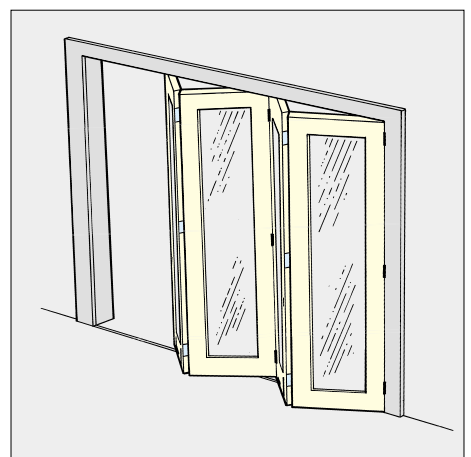
Rail: 918

Standard lengths 1500mm and 3000mm.

Pre-drilled and countersunk for wood or lugging into concrete.

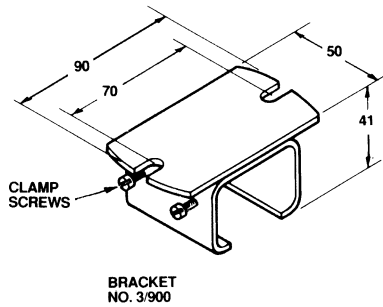
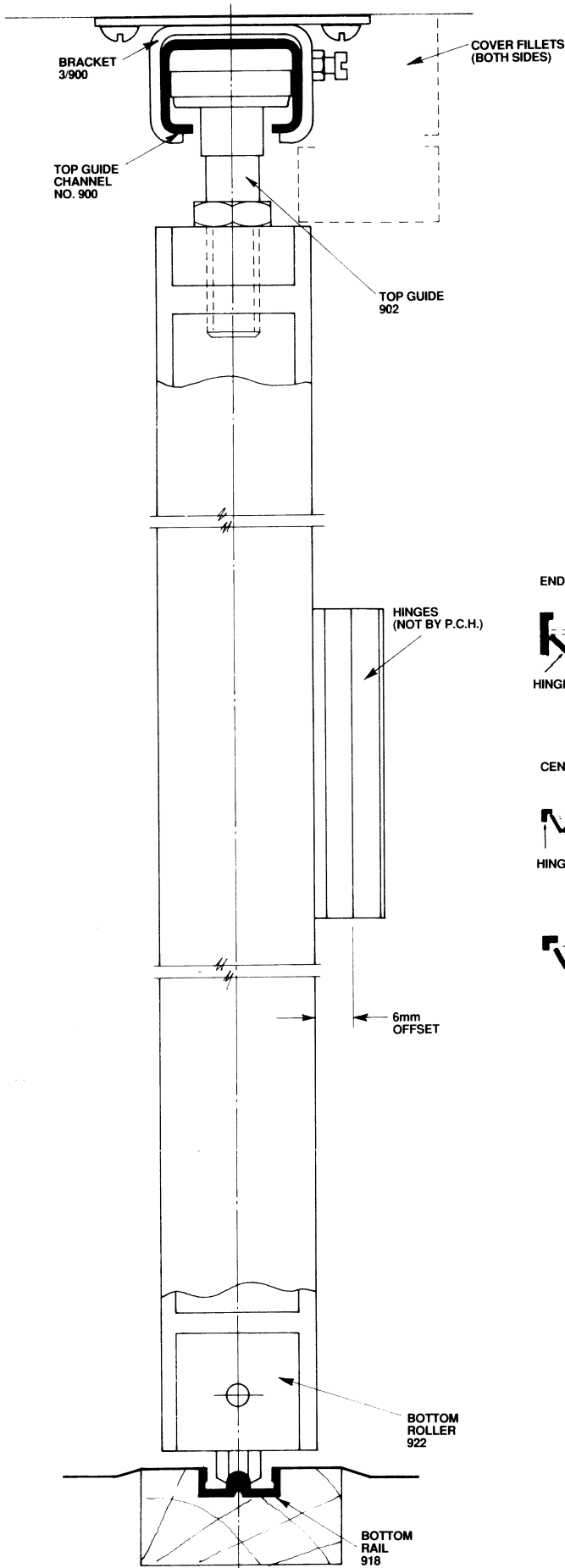
Accessories: Flush Pulls, Flush Bolts and Locks.

FOLDING DOORS ALUMINIUM SECTIONS BOTTOM ROLLER TIMBER DOORS



Standard Application

ARCADE ENDFOLD & CENTREFOLD A70



EXAMPLE PLAN DETAILS

ENDFOLD



CENTREFOLD

