

CENTREFOLD PARTITION (Council) 301

EACH DOOR WEIGHT MAX 55 or 70 kg

APPLICATION

- ▶ Suitable for residential and commercial folding partitions.
- ▶ Leaves are hung centrally under the lintel and can fold to one or both sides of the opening.
- ▶ To cover any width of opening, any number of folding units can be used.

DOOR SPECIFICATION

	301	301H
For individual leaves:		
Max Leaf Height	3300mm	3600mm
Max Leaf Weight	55 kg	70 kg
Max Leaf Width	1000mm	1000mm
Leaf Thickness	44-57mm	44-57mm

Folding units of up to seven full leaves and one half leaf can be hinged to post.

Floating units consist of three, five or seven full leaves.

Access doors should be either be a separate swing door or a wicket door in one of the folding leaves.

All full leaves should be of an equal width. Instruction on leaf width calculation for full and half leaf are provided with the Expert Service and Joinery Instruction 2528.

Clearance between leaves to be 2mm minimum.

Door leaves should be constructed to provide secure fixing for hanger, hinges and guides and can be flush, panelled or glazed.

GEAR SPECIFICATION

Track:	301 (2mm thickness) or 301H (3mm thickness)
Material:	galvanised steel
Standard Lengths:	1800mm, 2000mm, 2500mm, 3000mm, 4000mm and 6000mm

Brackets:-
soffit fixing 3A/301 aluminium alloy pressure die casting
Brackets for special applications are available (see overleaf).
Fix at 900mm centres (maximum).
Fix additional bracket where folding units stack.

Hangers:- 61A/S
Hangers are fitted with steel wheels on maintenance free sealed for life precision ball bearings.
Vertical adjustment is simple and positive.

Guides:- 106R/94

Hinges:- 403/2 butt hinge
On leaves up to 3000mm fit 3 hinges high, above 3000mm fit 4 hinges.

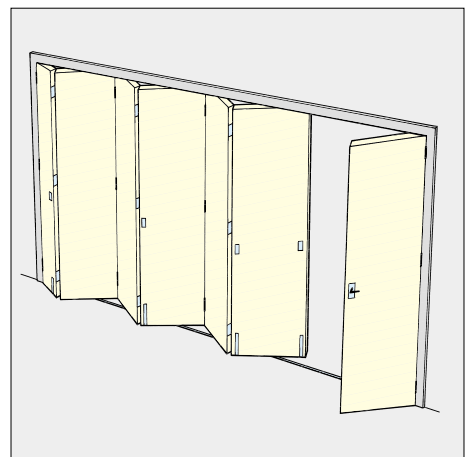
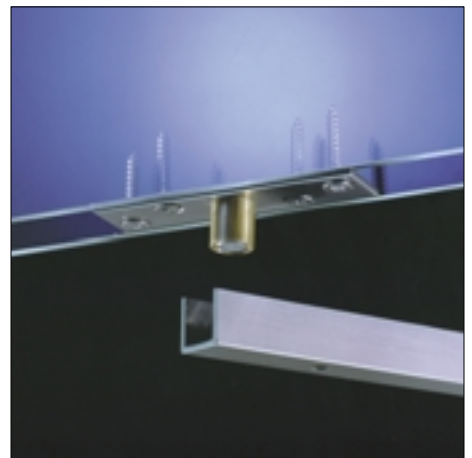
All steel parts to hangers and guides are electro-zinc plated.

Channel: 94X aluminium
94 brass

Standard lengths of aluminium channel correspond with standard track lengths, standard lengths of brass channel are 1500mm and 3000mm. Pre-drilled and countersunk for wood or lugging into concrete.

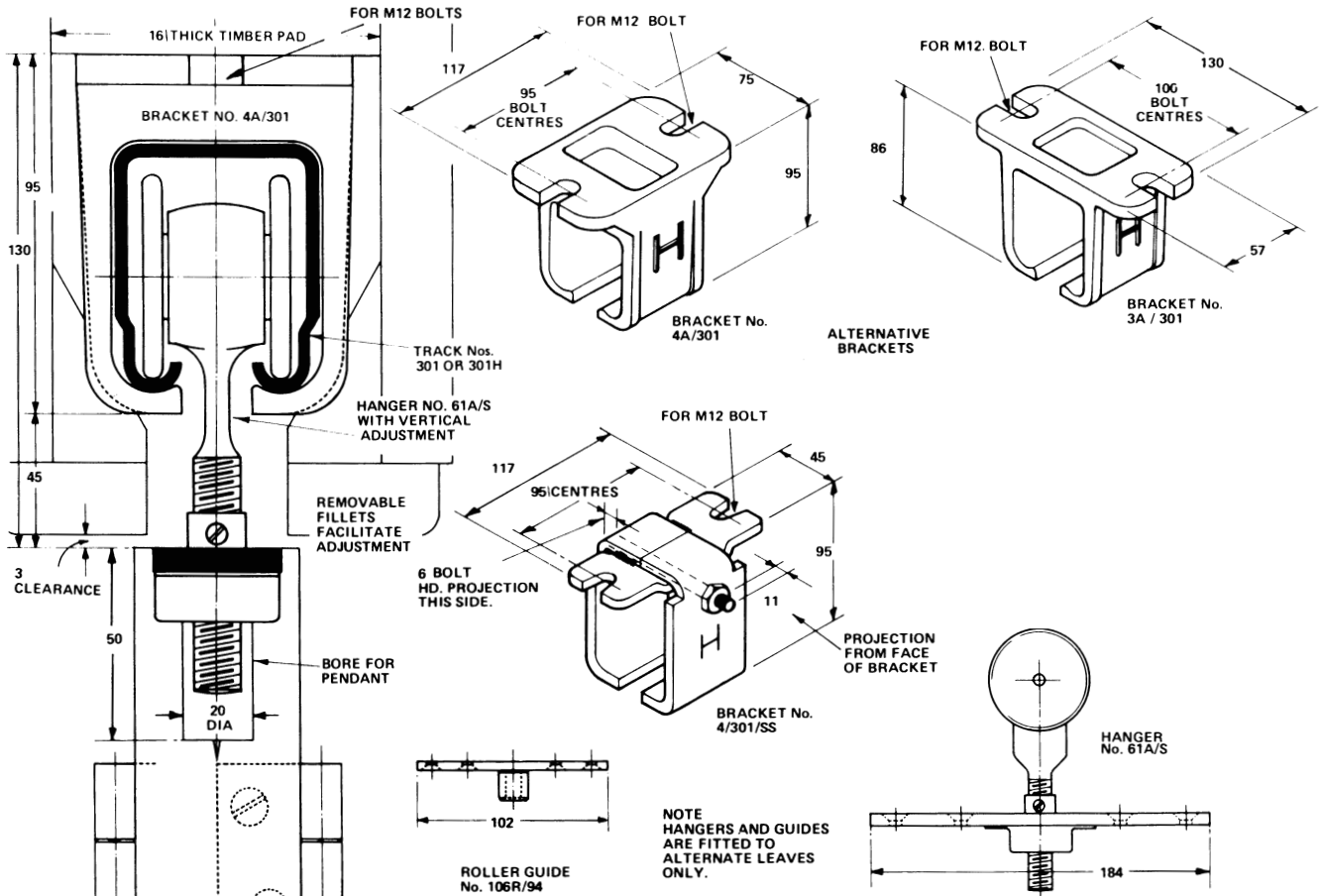
Accessories: Flush Pulls, Flush Bolts and Locks.

INTERNAL FOLDING DOORS HINGED TO POST OR FLOATING TOP HUNG TIMBER DOORS



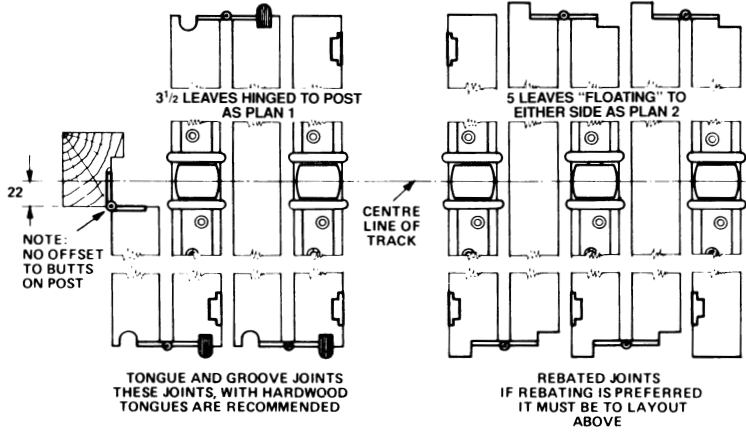
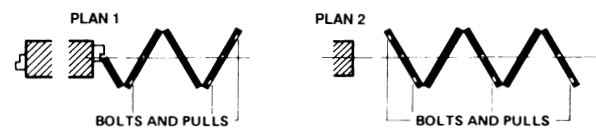
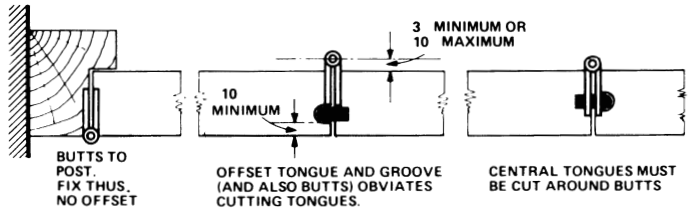
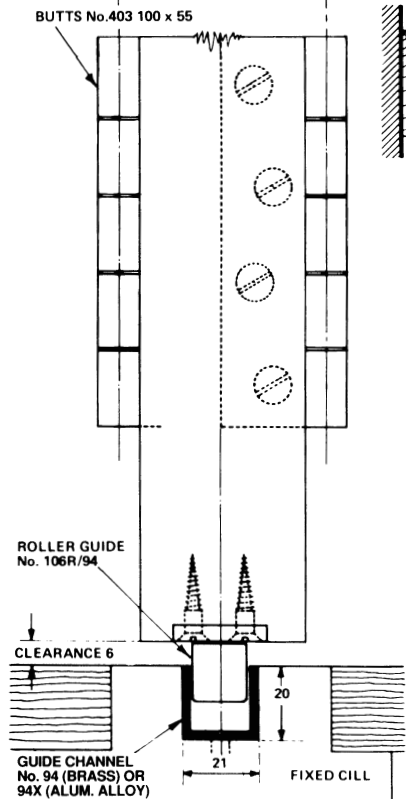
Standard Application

CENTREFOLD PARTITION COUNCIL 301



SECTION SCALE 1 : 2

COUNCIL CENTRE FOLD 301 AND 301H
 PLEASE REFER TO JOINERY AND INSTALLATION DETAIL PRIOR TO CUTTING DOOR LEAVES.
 MAXIMUM RECOMMENDED LEAF WIDTH IS 1000mm.
 CLEARANCE BETWEEN LEAVES SHOULD NOT BE LESS THAN 2mm.



**CENTREFOLD
PARTITION
(Council)**

305

E A C H D O O R W E I G H T M A X 8 0 k g

APPLICATION

- ▶ Suitable for larger and heavier residential and commercial folding partitions.
- ▶ Leaves are hung centrally under the lintel and can fold to one or both sides of the opening.
- ▶ To cover any width of opening, any number of folding units can be used

DOOR SPECIFICATION

305

For individual leaves:

Max Leaf Height	4500mm
Max Leaf Weight	80 kg
Max Leaf Width	1000mm
Leaf Thickness	44-57mm

Folding units of up to seven full leaves and one half leaf can be hinged to post.

Floating units consist of three, five or seven full leaves.

Access doors should be either be a separate swing door or a wicket door in one of the folding leaves.

All full leaves should be of an equal width. Instruction on leaf width calculation for full and half leaf are provided with the Expert Service and Joinery Instruction 2528.

Clearance between leaves to be 2mm minimum.

Door leaves should be constructed to provide secure fixing for hanger, hinges and guides and can be flush, panelled or glazed.

GEAR SPECIFICATION

Track:	305 (3mm thickness)
Material:	galvanised steel
Standard Lengths:	1800mm, 2000mm, 2500mm, 3000mm, 4000mm and 6000mm

Brackets:-
soffit fixing 3A/305 aluminium alloy pressure die casting
Brackets for special applications are available (see overleaf).
Fix at 900mm centres (maximum).
Fix additional bracket where folding units stack.

Hangers:- 61C/S
Hangers are fitted with steel wheels on maintenance free sealed for life precision ball bearings.
Vertical adjustment is simple and positive.

Guides:- 106R/94

Hinges:- 403/3 butt hinge
On leaves up to 3000mm fit 3 hinges high, above 3000mm fit 4 hinges.

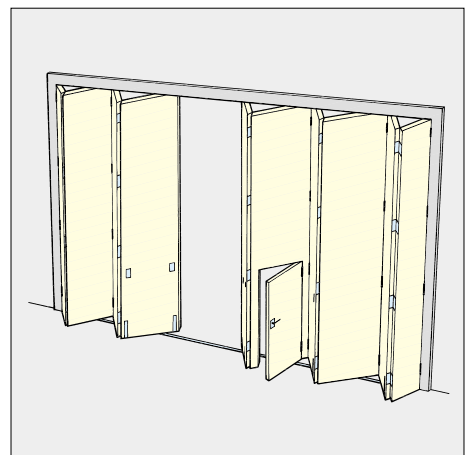
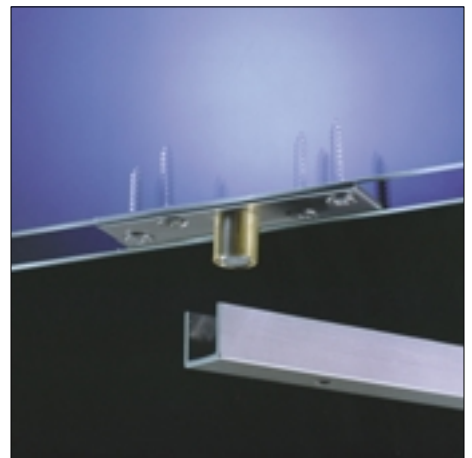
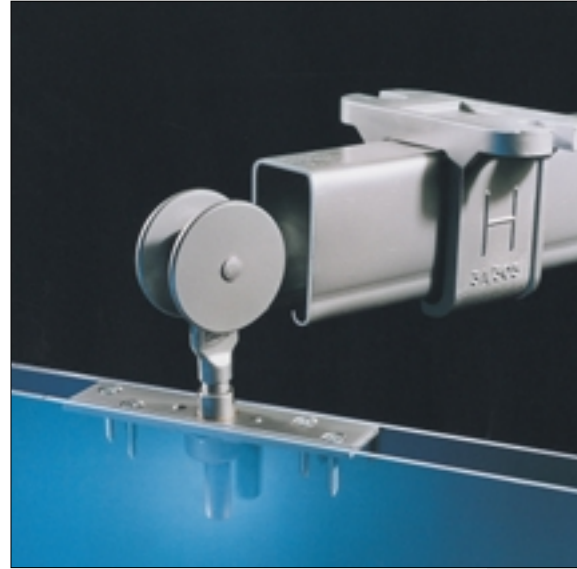
All steel parts to hangers and guides are electro-zinc plated.

Channel: 94X aluminium
94 brass

Standard lengths of aluminium channel correspond with standard track lengths, standard lengths of brass channel are 1500mm and 3000mm. Pre-drilled and countersunk for wood or lugging into concrete.

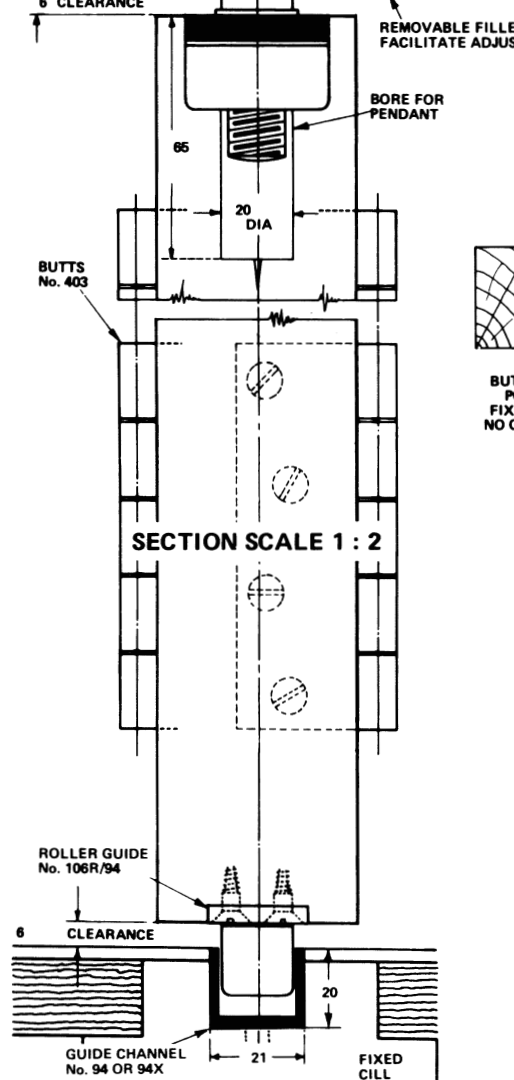
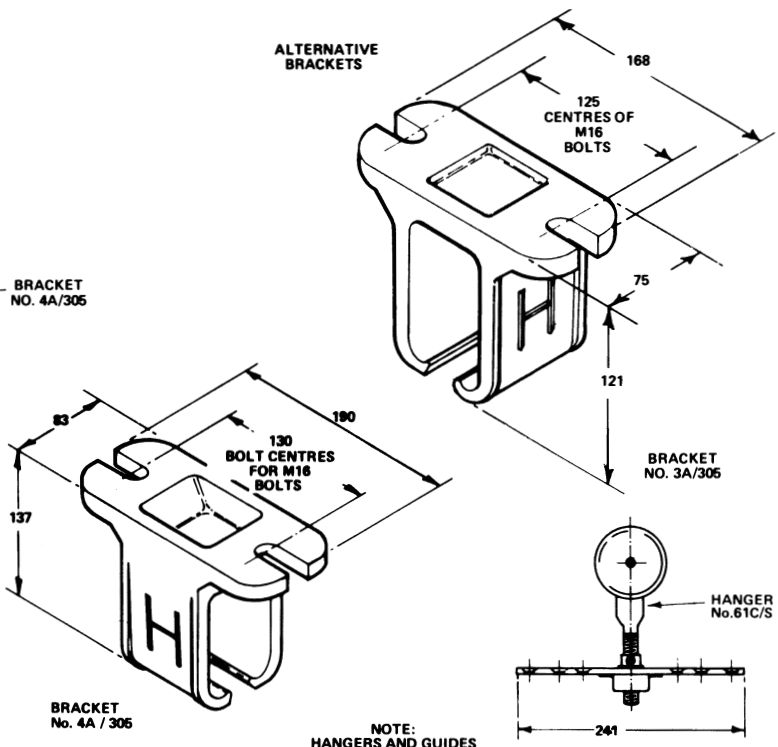
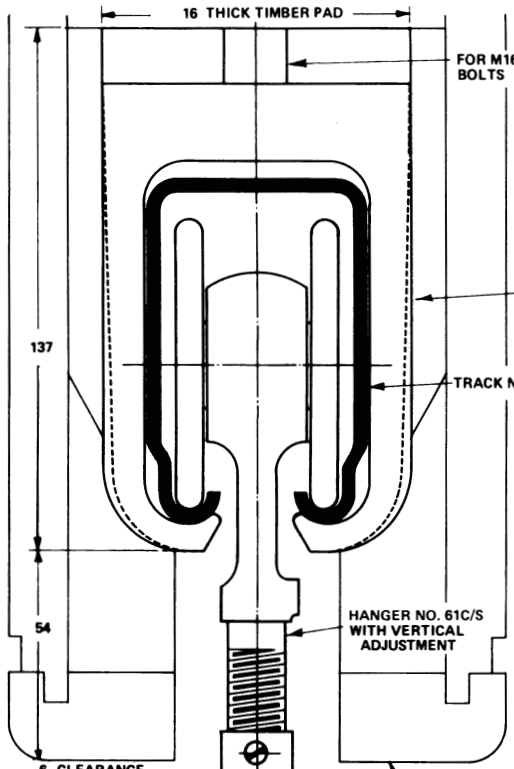
Accessories: Flush Pulls, Flush Bolts and Locks.

INTERNAL FOLDING DOORS HINGED TO POST OR FLOATING TOP HUNG TIMBER DOORS



Standard Application

CENTREFOLD PARTITION COUNCIL 305

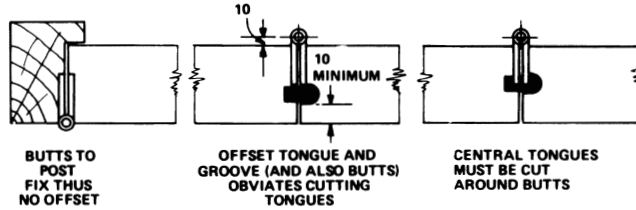


CENTRE FOLD PARTITION 305

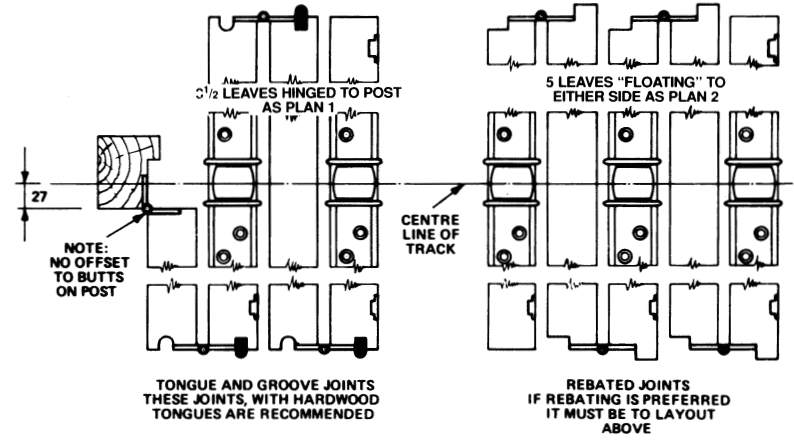
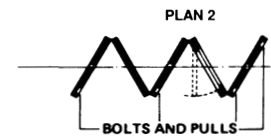
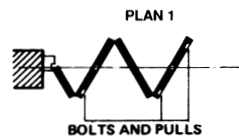
PLEASE REFER TO JOINERY AND INSTALLATION DETAIL PRIOR TO CUTTING DOOR LEAVES.

MAXIMUM RECOMMENDED LEAF WIDTH IS 1000mm.

CLEARANCE BETWEEN LEAVES SHOULD NOT BE LESS THAN 2mm.



SECTION SCALE 1 : 2



COLLEGE ENDFOLD 70

E A C H D O O R W E I G H T M A X 7 0 k g

APPLICATION

- ▶ Suitable for end folding partitions in commercial or public buildings where weight has to be taken at floor level.
- ▶ Leaves can fold to one or both sides of the opening and can be stacked behind a reveal if required.
- ▶ College high quality bottom roller gear and fittings are ideally suited to high class joinery installations and all visible parts are finished in satin anodised aluminium.
- ▶ To cover any width of opening, any number of folding units can be used.

DOOR SPECIFICATION

For individual doors:

Max Leaf Height	3600mm
Max Leaf Weight	70 kg
Max Leaf Width	900mm
Leaf Thickness	44mm

Folding units of up to eight leaves can be hinged to post.

Floating units consist of four, six or eight leaves.

Access doors should be either be a separate swing door or a wicket door in one of the folding leaves.

Instruction on leaf width calculation for full and half leaf are provided with the Expert Service and Joinery Instruction 1982.

Clearance between leaves to be 2mm minimum.

Door leaves should be constructed to provide secure fixing for bottom rollers hinges and top guide rollers and can either be flushed, panelled or glazed. Minimum 200mm bottom rails and 125mm stiles are recommended.

Refer to drawing 2769 for operating instructions.

GEAR SPECIFICATION

Top Guide channel:	900 galvanised steel with safety lip	
Standard Lengths:	2000mm, 2500mm and 3000mm	

Top Guide brackets:-

soffit fixing	3/900	pressed steel zinc plated
face fixing	1/900	pressed steel zinc plated

Fix at 600mm centres (maximum).

Fix additional bracket where folding units stack.

Top guide rollers:-

901/919H

Top guide rollers are fitted with adjustable nylon rollers.

For lighter door leaves select 901/919L with concealed plate fixing.

Vertical adjustment is simple and positive.

Bottom rollers:-	920	satin anodised aluminium side plates
	923	concealed

Bottom rollers supported on thrust bearings.

Hinges:-

403/2 butt hinge

On leaves up to 3000mm fit 3 hinges high, above 3000mm fit 4 hinges.

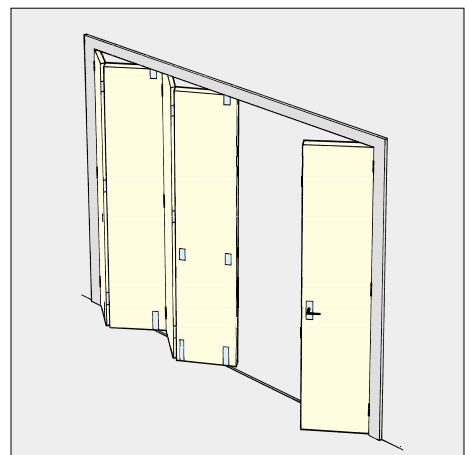
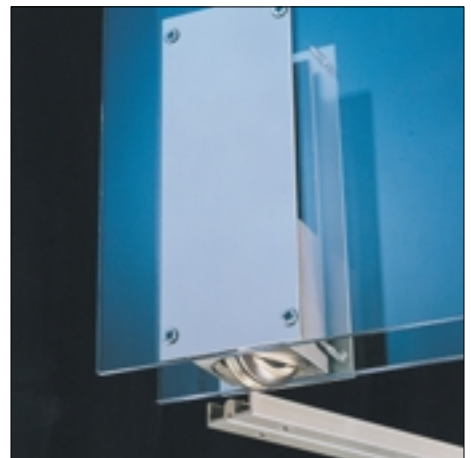
Rail:

918

Standard lengths 1500mm and 3000mm. Pre-drilled and countersunk for wood or lugging into concrete.

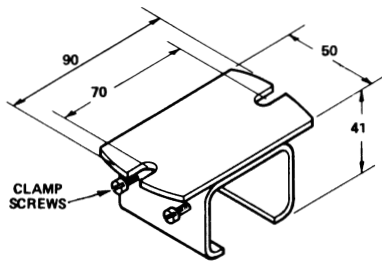
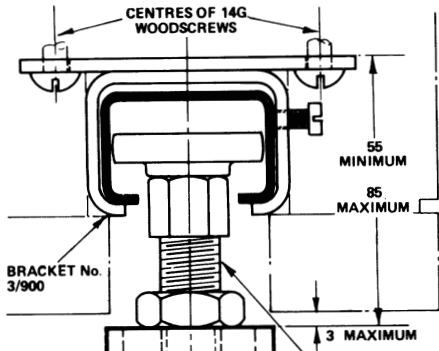
Accessories: Flush Pulls, Flush Bolts and Locks.

INTERNAL FOLDING DOORS HINGED TO POST OR FLOATING BOTTOM ROLLER TIMBER DOORS

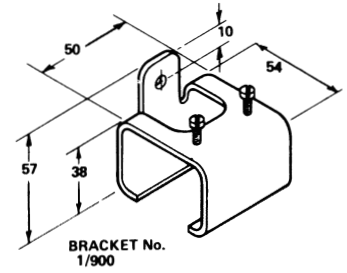


Standard Application

COLLEGE ENDFOLD 70



BRACKET No. 3/900

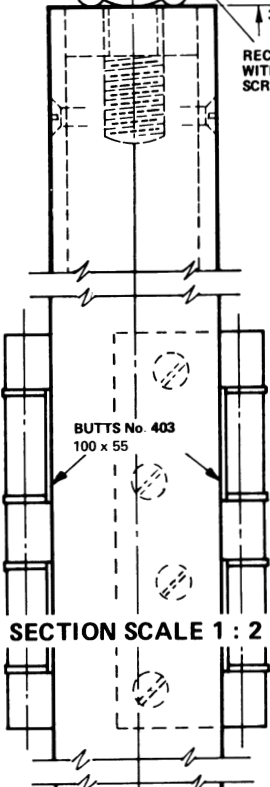


BRACKET No. 1/900

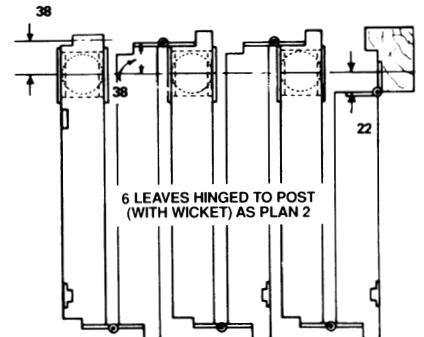
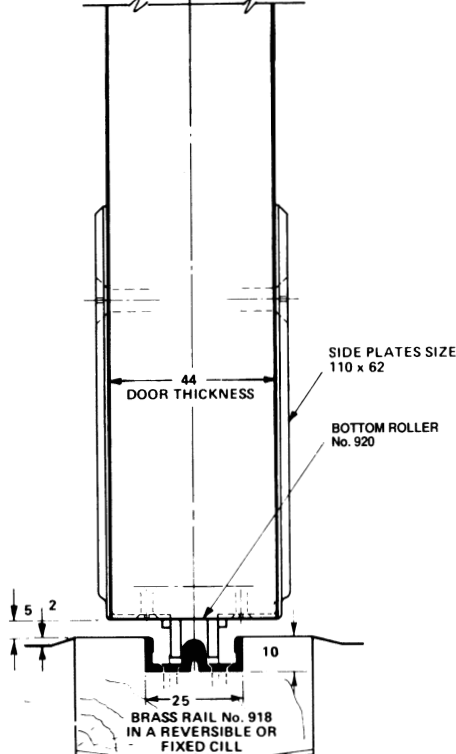
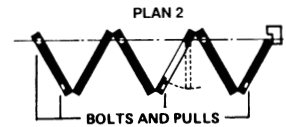
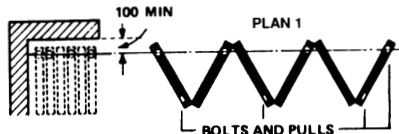
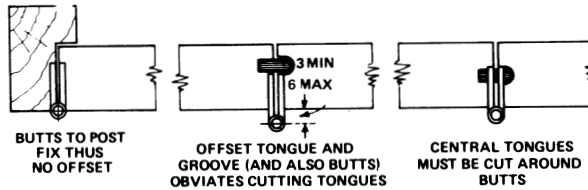
RECOMMENDED TOP GUIDE ROLLER No. 901/919H WITH VERTICAL ADJUSTMENT FOR HIGH OR WIDE SCREENS (APRON SIZE 127 x 57)

COLLEGE ENDFOLD 70 WIDTH OF LEAVES

ALL ALIKE EXCEPT PIVOT LEAF HINGED TO POST, WHICH MUST BE LESS BY HALF DOOR THICKNESS (22MM) PLUS 38mm.
PLEASE REFER TO JOINERY AND INSTALLATION DETAIL PRIOR TO CUTTING DOOR LEAVES.
LEAVES OF FLOATING UNITS ARE ALL OF EQUAL WIDTHS.
A FLOATING UNIT MUST BE 4, 6 OR 8 LEAVES.
MAXIMUM RECOMMENDED LEAF WIDTH IS 900mm.
CLEARANCE BETWEEN LEAVES SHOULD NOT BE LESS THAN 2mm.



SECTION SCALE 1 : 2



REBATED JOINTS IF REBATING IS PREFERRED IT MUST BE TO LAYOUT ABOVE

COLLEGE ENDFOLD I40

E A C H D O O R W E I G H T M A X I 4 0 k g

APPLICATION

- ▶ Suitable for end folding partitions in commercial or public buildings where weight has to be taken at floor level.
- ▶ Leaves can fold to one or both sides of the opening and can be stacked behind a reveal if required.
- ▶ College high quality bottom roller gear and fittings are ideally suited to high class joinery installations and all visible parts are finished in polished chrome and satin anodised aluminium.
- ▶ To cover any width of opening, any number of folding units can be used.

DOOR SPECIFICATION

For individual doors:

Max Leaf Height	5500mm
Max Leaf Weight	140 kg
Max Leaf Width	900mm
Leaf Thickness	54mm

Folding units of up to eight leaves can be hinged to post.

Floating units consist of four, six or eight leaves.

Access doors should be either be a separate swing door or a wicket door in one of the folding leaves.

Instruction on leaf width calculation for full and half leaf are provided with the Expert Service and Joinery Instruction 2913.

Clearance between leaves to be 2mm minimum.

Door leaves should be constructed to provide secure fixing for for bottom rollers hinges and top guide rollers and can either be flush, panelled or glazed. Minimum 200mm bottom rails and 150mm stiles are recommended.

Refer to drawing 2769 for operating instructions.

GEAR SPECIFICATION

Top Guide channel: 900 galvanised steel with safety lip
Standard Lengths: 2000mm, 2500mm and 3000mm

Top Guide brackets:-
soffit fixing 3/900 pressed steel zinc plated
face fixing 1/900 pressed steel zinc plated
Fix at 600mm centres (maximum).
Fix additional bracket where folding units stack.

Top guide rollers:- 901/919HD
Top guide rollers are fitted with adjustable nylon rollers.
Vertical adjustment is simple and positive.

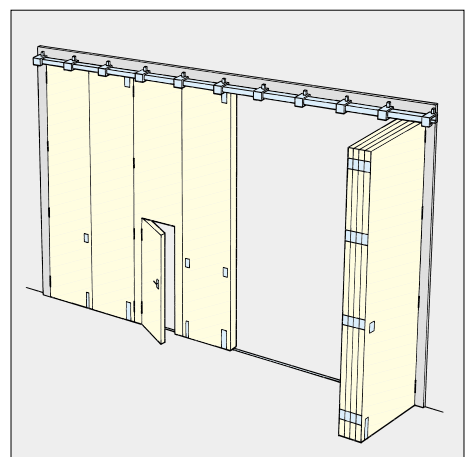
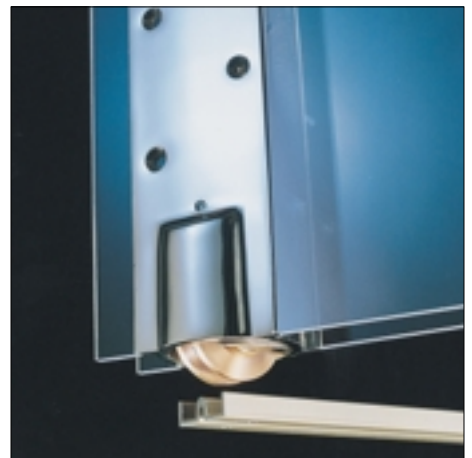
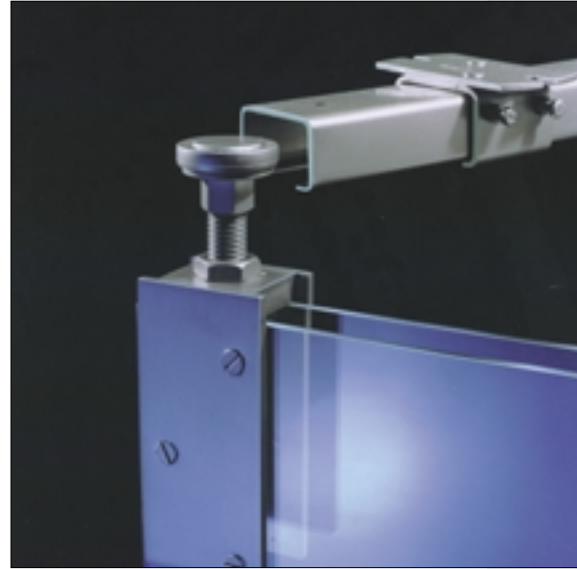
Bottom rollers:- 919H chrome finish
Bottom rollers supported on thrust bearings.

Hinges:- 403/3 butt hinge
On leaves up to 3000mm fit 3 hinges high, above 3000mm fit 4 hinges.

Rail: 917
Standard lengths 1500mm and 3000mm. Pre-drilled and countersunk for wood or lugging into concrete.

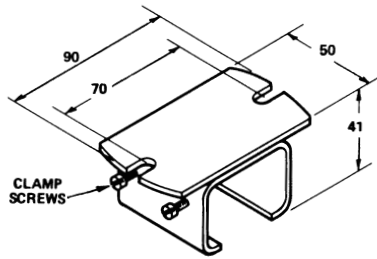
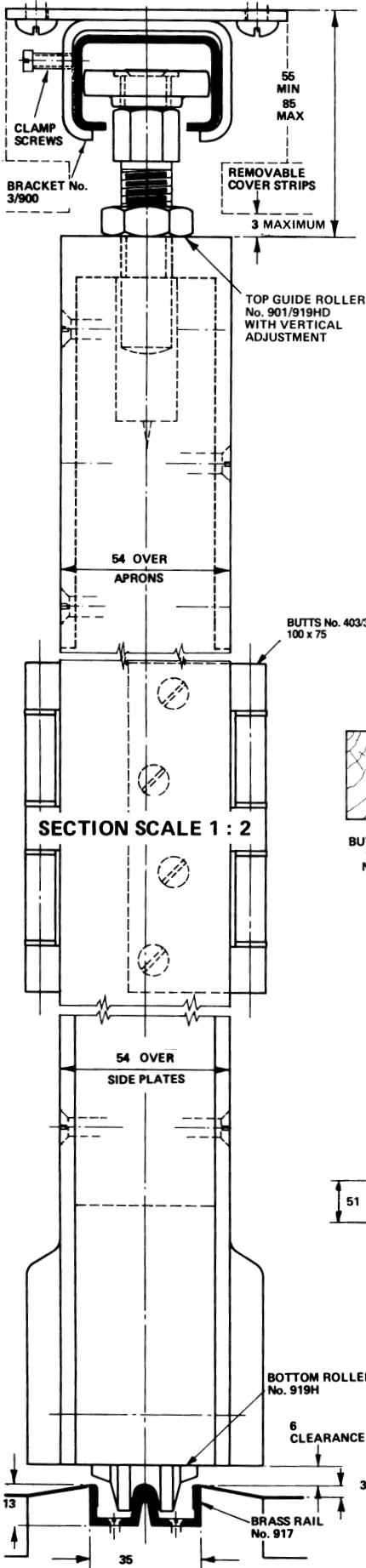
Accessories: Flush Pulls, Flush Bolts and Locks.

INTERNAL FOLDING DOORS HINGED TO POST OR FLOATING BOTTOM ROLLER TIMBER DOORS

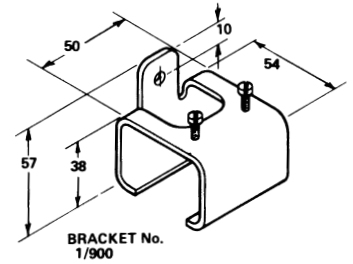


Standard Application

COLLEGE ENDFOLD 140



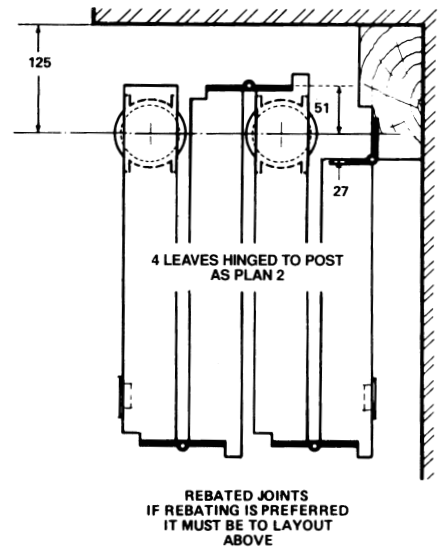
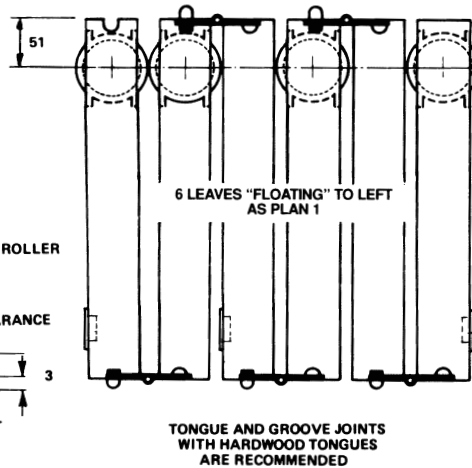
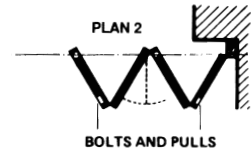
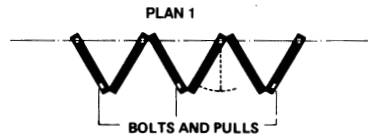
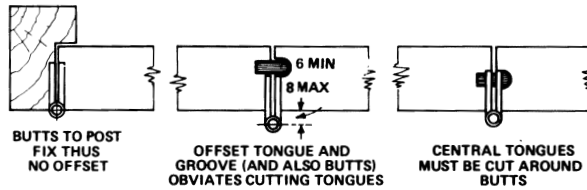
BRACKET No. 3/900



BRACKET No. 1/900

PARTITION ENDFOLD 140

WIDTH OF LEAVES
 ALL ALIKE EXCEPT PIVOT LEAF HINGED TO POST, WHICH MUST BE LESS BY HALF DOOR THICKNESS PLUS 51mm.
 PLEASE REFER TO JOINERY AND INSTALLATION DETAIL PRIOR TO CUTTING DOOR LEAVES.
 LEAVES OF FLOATING UNITS ARE ALL OF EQUAL WIDTHS.
 A FLOATING UNIT MUST BE 4, 6 OR 8 LEAVES.
 MAXIMUM RECOMMENDED LEAF WIDTH IS 900mm.
 CLEARANCE BETWEEN LEAVES SHOULD NOT BE LESS THAN 2mm.



COLLEGE CENTREFOLD 70

E A C H D O O R W E I G H T M A X 7 0 k g

APPLICATION

- ▶ Suitable for centre folding partitions in commercial or public buildings where weight has to be taken at floor level.
- ▶ Leaves are supported centrally under the lintel and can fold to one or both sides of the opening.
- ▶ College high quality bottom roller gear and fittings are ideally suited to high class joinery installations and all visible parts are finished in satin anodised aluminium.
- ▶ To cover any width of opening, any number of folding units can be used.

DOOR SPECIFICATION

For individual doors:

Max Leaf Height	3600mm
Max Leaf Weight	70 kg
Max Leaf Width	1000mm
Leaf Thickness	44mm

Folding units of up to seven full leaves and one half leaf can be hinged to post.

Floating units consist of three, five or seven full leaves.

Access doors should be either be a separate swing door or a wicket door in one of the folding leaves.

All full leaves should be of an equal width. Instruction on leaf width calculation for full and half leaf are provided with the Expert Service and Joinery Instruction 2528.

Clearance between leaves to be 2mm minimum.

Door leaves should be constructed to provide secure fixing for bottom rollers, hinges and top guide rollers and can either be flush, panelled or glazed. Minimum 200mm bottom rails are recommended.

Refer to drawing 2769 for operating instructions.

GEAR SPECIFICATION

Top Guide channel:	900 galvanised steel with safety lip
Standard Lengths:	2000mm, 2500mm and 3000mm

Top guide brackets:-

soffit fixing	3/900	pressed steel zinc plated
Fix at 600mm centres (maximum).		
Fix additional bracket where folding units stack.		

Top guide rollers:-

	901/919H
Top guide rollers are fitted with adjustable nylon rollers.	
For lighter door leaves select 901/909L with concealed plate fixing.	
Vertical adjustment is simple and positive.	

Bottom rollers:-	920	satin anodised aluminium side plates
	923	concealed

Bottom rollers supported on thrust bearings.

Hinges:-

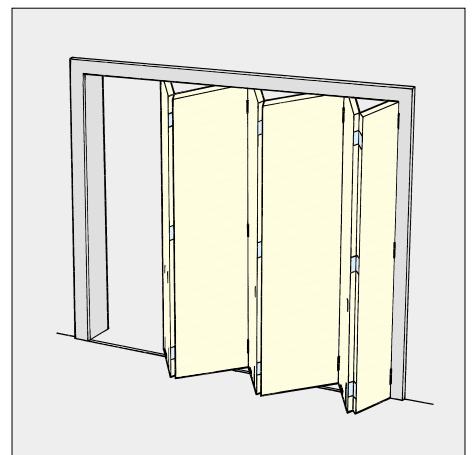
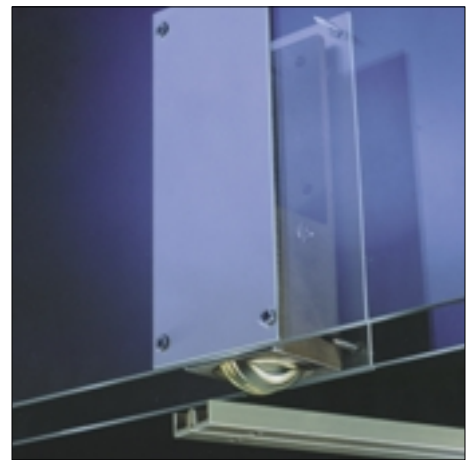
On leaves up to 3000mm fit 3 hinges high, above 3000mm fit 4 hinges.

Rail:

Standard lengths 1500mm and 3000mm. Pre-drilled and countersunk for wood or lugging into concrete.

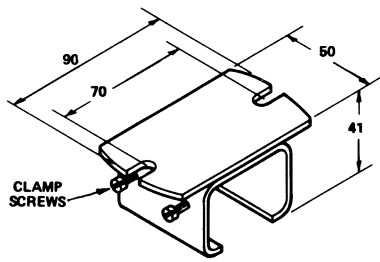
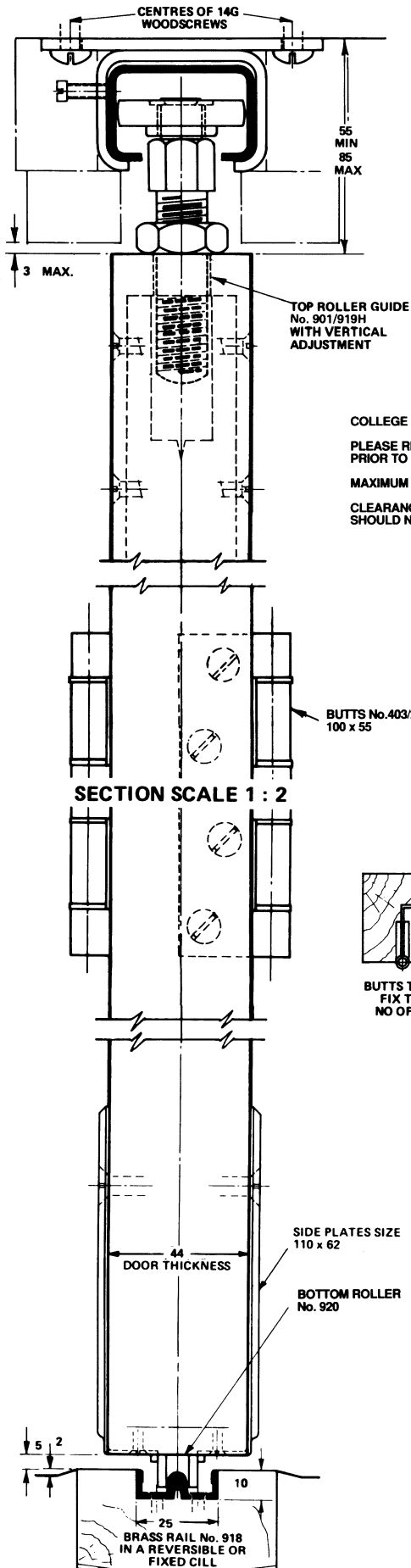
Accessories: Flush Pulls, Flush Bolts and Locks.

INTERNAL FOLDING DOORS HINGED TO POST OR FLOATING BOTTOM ROLLER TIMBER DOORS

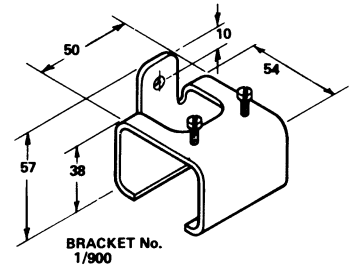


Standard Application

COLLEGE CENTREFOLD 70



BRACKET No. 3/900



BRACKET No. 1/900

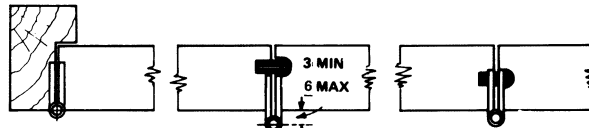
COLLEGE CENTRE FOLD 70

PLEASE REFER TO JOINERY AND INSTALLATION DETAIL PRIOR TO CUTTING DOOR LEAVES.

MAXIMUM RECOMMENDED LEAF WIDTH IS 1000mm.

CLEARANCE BETWEEN LEAVES SHOULD NOT BE LESS THAN 2mm.

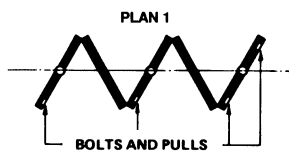
SECTION SCALE 1 : 2



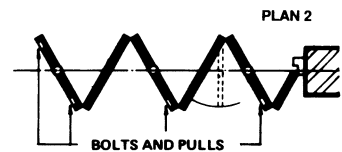
BUTTS TO POST
FIX THUS
NO OFFSET

OFFSET TONGUE AND
GROOVES (AND ALSO BUTTS)
OBIVIATES CUTTING TONGUES

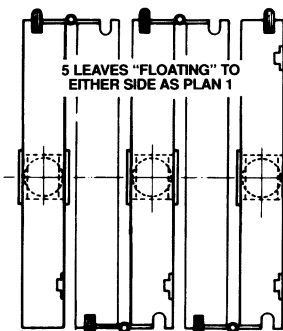
CENTRAL TONGUES
MUST BE CUT AROUND
BUTTS



BOLTS AND PULLS

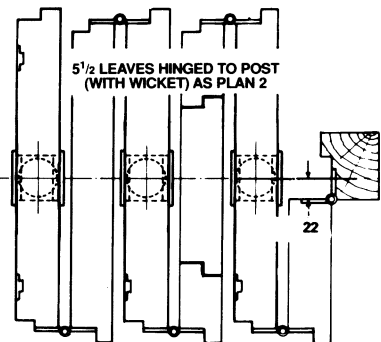


BOLTS AND PULLS



TONGUE AND GROOVE JOINTS
WITH HARDWOOD TONGUES
ARE RECOMMENDED

CENTRE-LINE
OF TRACK



REBATED JOINTS
IF REBATING IS PREFERRED
IT MUST BE TO LAYOUT
ABOVE

COLLEGE CENTERFOLD

140

E A C H D O O R W E I G H T M A X 1 4 0 k g

INTERNAL FOLDING DOORS HINGED TO POST OR FLOATING BOTTOM ROLLER TIMBER DOORS

APPLICATION

- ▶ Suitable for centre folding partitions in commercial or public buildings where weight has to be taken at floor level.
- ▶ Leaves are supported centrally under the lintel and can fold to one or both sides of the opening.
- ▶ College high quality bottom roller gear and fittings are ideally suited to high class joinery installations and all visible parts are finished in polished chrome and satin anodised aluminium.
- ▶ To cover any width of opening, any number of folding units can be used.

DOOR SPECIFICATION

For individual doors:

Max Leaf Height	5500mm
Max Leaf Weight	140kg
Max Leaf Width	1000mm
Leaf Thickness	54mm

Folding units of up to seven full leaves and one half leaf can be hinged to post.

Floating units consist of five or seven full leaves.

Access doors should be either a separate swing door or a wicket door in one of the folding leaves.

All full leaves should be of an equal width. Instruction on leaf width calculation for full and half leaf are provided with the Expert Service and Joinery Instruction 2528.

Clearance between leaves to be 2mm minimum.

Door leaves should be constructed to provide secure fixing for bottom rollers, hinges and top guide rollers and can be either flush, panelled or glazed. Minimum 200mm bottom rails are recommended.

Refer to drawing 2769 for operating instructions.

GEAR SPECIFICATION

Top Guide Channel	900 galvanised Steel with safety lips
Standard lengths:	2000mm, 2500 mm and 3000mm

Top Guide Brackets:		
soffit fixing	3/900	pressed steel zinc plated
Fix at every 600mm centres (maximum).		
Fit additional brackets where folding units stack.		

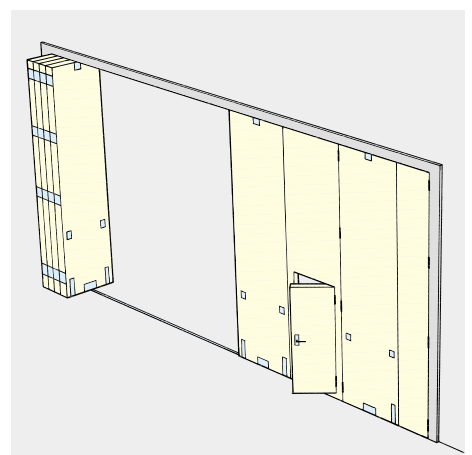
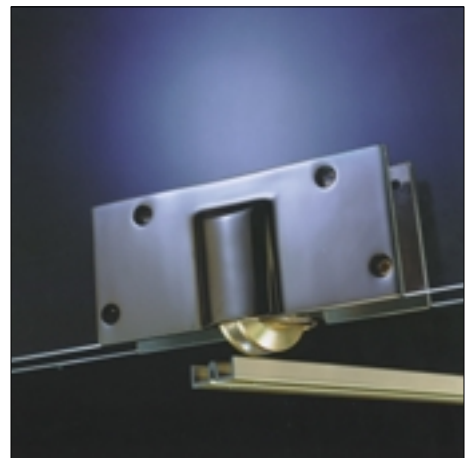
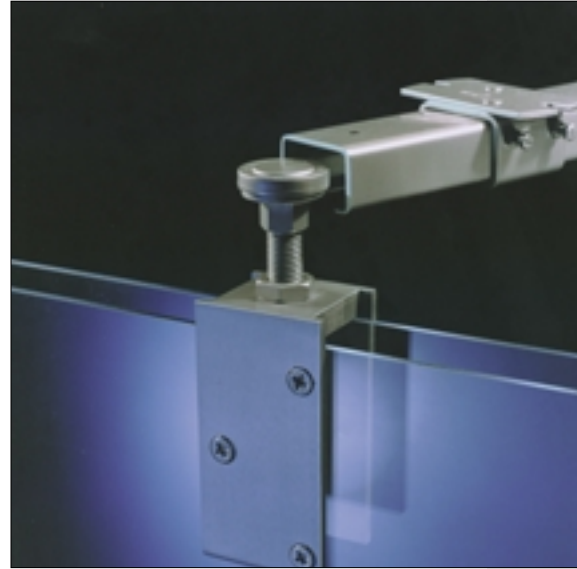
Top Guide Rollers:	901/919HD
Top guide rollers are fitted with adjustable nylon rollers.	
Vertical adjustment is simple and positive.	

Bottom Rollers:	909H	chrome finish
Bottom rollers supported on thrust bearings.		

Hinges:	403/3	butt hinge
On leaves up to 3000mm high fit 3 hinges, above 3000mm fit 4 hinges.		

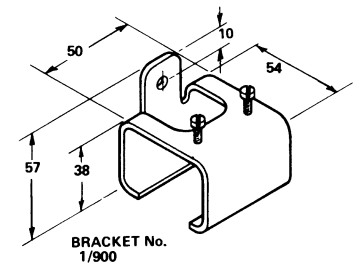
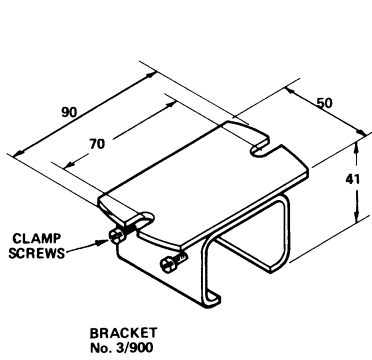
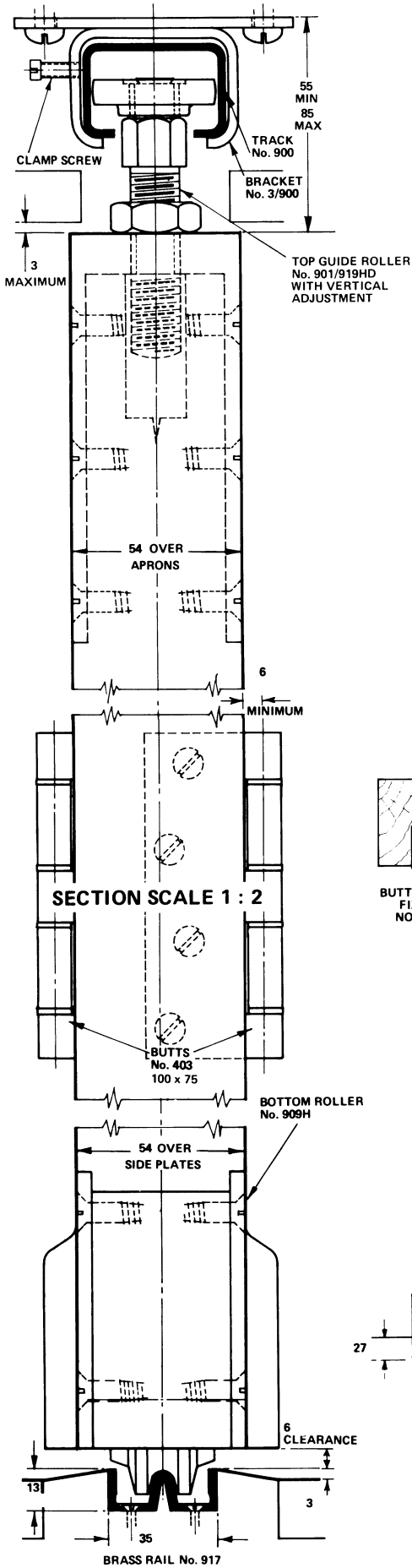
Rail:	917
Standard lengths 1500mm and 3000mm	
Pre-drilled and countersunk for wood or lugging into concrete.	

Accessories	Flush Pulls, Flush Bolts and Locks.
--------------------	-------------------------------------



Standard Application

COLLEGE CENTREFOLD 140

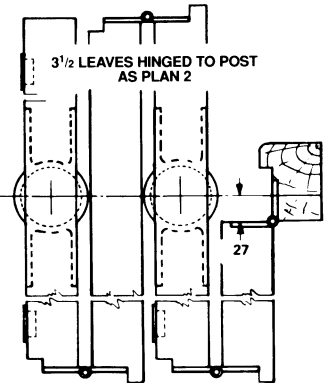
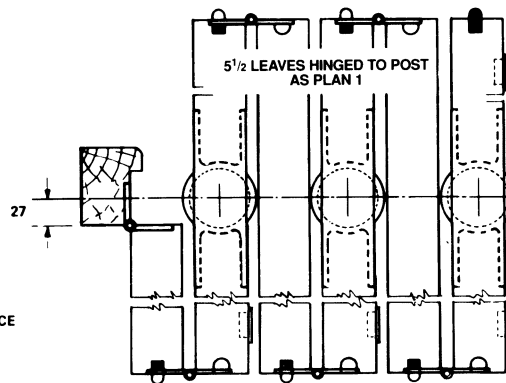
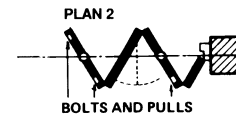
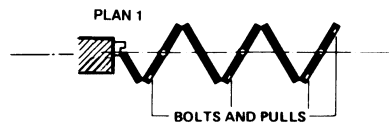
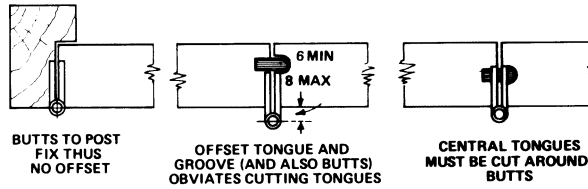


COLLEGE CENTRE FOLD 140

PLEASE REFER TO JOINERY AND INSTALLATION DETAIL PRIOR TO CUTTING DOOR LEAVES.

MAXIMUM RECOMMENDED LEAF WIDTH IS 1000mm.

CLEARANCE BETWEEN LEAVES SHOULD NOT BE LESS THAN 2mm.



TONGUE AND GROOVE JOINTS WITH HARDWOOD TONGUES ARE RECOMMENDED

REBATED JOINTS IF REBATING IS PREFERRED IT MUST BE TO LAYOUT ABOVE

ARCADE A70

ENDFOLD & CENTREFOLD

E A C H D O O R W E I G H T M A X 7 0 k g

APPLICATION

- ▶ Arcade high quality bottom roller gear and fittings are designed specifically for aluminium framed glazed internal retail and display applications where the weight has to be taken at floor level.
- ▶ Options of centre and end folding partitions are available. Both centre folding and end folding leaves can fold to one or both sides of the opening and end folding leaves can be stacked behind a reveal if required.
- ▶ To cover any width of opening, any number of folding units can be used.

DOOR SPECIFICATION

For individual doors:

Max Leaf Height	3600mm	
Max Leaf Weight	70 kg	
Max Leaf Width	Endfold A70	900mm
	Centrefold A70	1000mm
Door Thickness	45-47mm	

End folding units up to eight leaves can be hinged to post and floating units should consist of four, six or eight leaves.

With centre folding units up to seven full leaves and one half leaf can be hinged to post, floating units should consist of five or seven leaves.

See overleaf for leaf width calculation.

Where access is required a separate swing door should be hinged to post.

Clearance between leaves to be 2mm minimum.

Door leaves should be constructed from proprietary aluminium section rails and stiles with a glazed infill.

Refer to drawing 2769 for operating instructions.

GEAR SPECIFICATION

Top Guide Channel 900 galvanised steel with safety lip
Standard lengths: 2000mm, 2500mm and 3000mm

Top Guide Brackets:-

Soffit fixing 3/900 pressed steel zinc plated
Face fixing 1/900 pressed steel zinc plated

Fix at 600mm centres (maximum).

Fix additional bracket where folding units stack.

Top Guide Rollers : 902 concealed

Top guide rollers are fitted with adjustable nylon rollers.

Vertical adjustment is simple and positive.

Bottom Rollers : 922 concealed

Bottom rollers supported on thrust bearings

Both top guide rollers and bottom rollers are designed to suit the rebate in standard aluminium door rails.

Hinges:

It is recommended that proprietary hinges are used to suit the aluminium rails and stile used to construct the leaves.

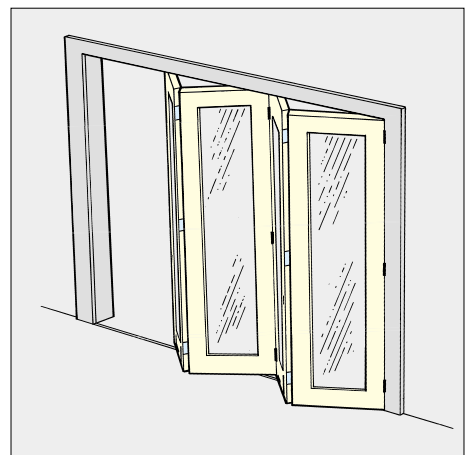
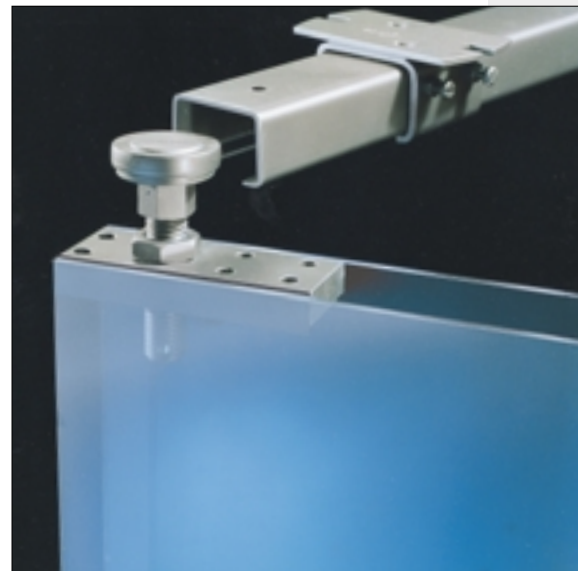
On leaves up to 3000mm fit 3 hinges high, above 3000mm fit 4 hinges.

Rail: 918

Standard lengths 1500mm and 3000mm.

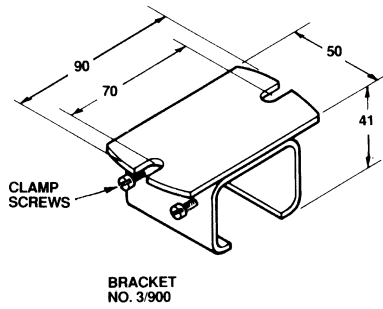
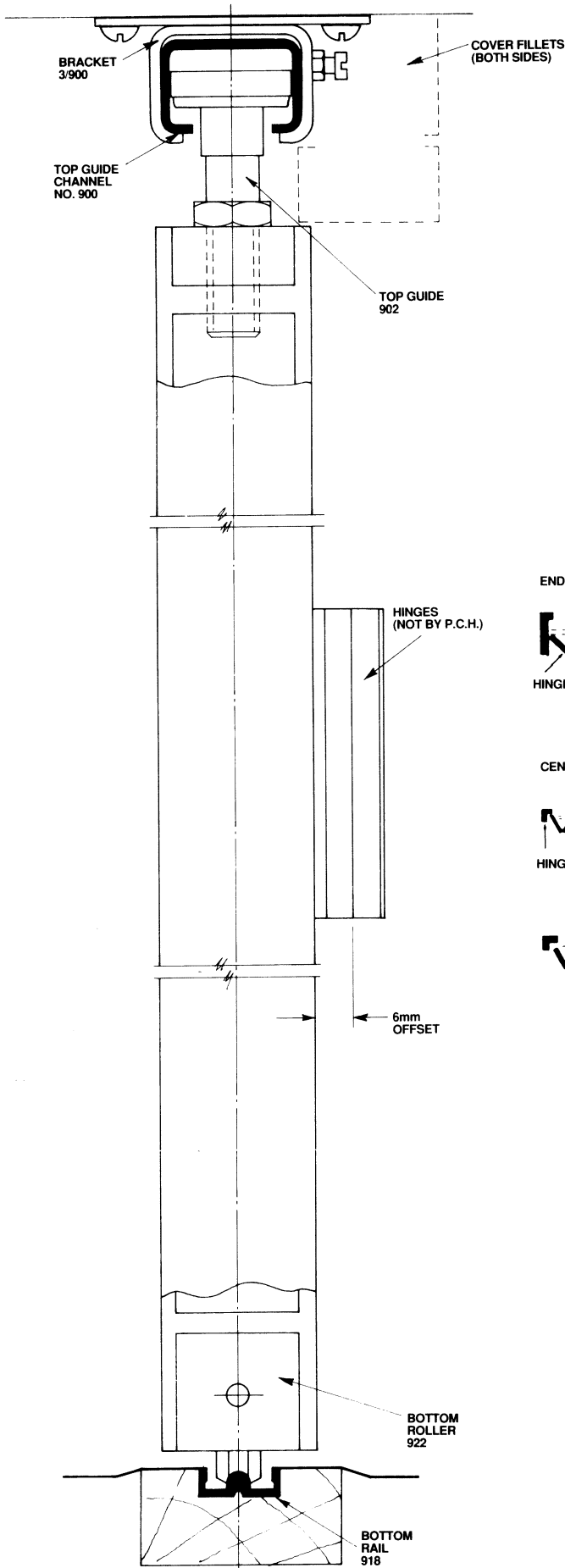
Pre-drilled and countersunk for wood or lugging into concrete.

Accessories: Flush Pulls, Flush Bolts and Locks.



Standard Application

ARCADE ENDFOLD & CENTREFOLD A70



EXAMPLE PLAN DETAILS

ENDFOLD



CENTREFOLD

