

# ARCADE A70

## ENDFOLD & CENTREFOLD

E A C H D O O R W E I G H T M A X 7 0 k g

### APPLICATION

- ▶ Arcade high quality bottom roller gear and fittings are designed specifically for aluminium framed glazed internal retail and display applications where the weight has to be taken at floor level.
- ▶ Options of centre and end folding partitions are available. Both centre folding and end folding leaves can fold to one or both sides of the opening and end folding leaves can be stacked behind a reveal if required.
- ▶ To cover any width of opening, any number of folding units can be used.

### DOOR SPECIFICATION

For individual doors:

Max Leaf Height	3600mm	
Max Leaf Weight	70 kg	
Max Leaf Width	Endfold A70	900mm
	Centrefold A70	1000mm
Door Thickness	45-47mm	

End folding units up to eight leaves can be hinged to post and floating units should consist of four, six or eight leaves.

With centre folding units up to seven full leaves and one half leaf can be hinged to post, floating units should consist of five or seven leaves.

See overleaf for leaf width calculation.

Where access is required a separate swing door should be hinged to post.

Clearance between leaves to be 2mm minimum.

Door leaves should be constructed from proprietary aluminium section rails and stiles with a glazed infill.

Refer to drawing 2769 for operating instructions.

### GEAR SPECIFICATION

**Top Guide Channel** 900 galvanised steel with safety lip  
Standard lengths: 2000mm, 2500mm and 3000mm

#### Top Guide Brackets:-

Soffit fixing 3/900 pressed steel zinc plated  
Face fixing 1/900 pressed steel zinc plated

Fix at 600mm centres (maximum).

Fix additional bracket where folding units stack.

**Top Guide Rollers :** 902 concealed

Top guide rollers are fitted with adjustable nylon rollers.

Vertical adjustment is simple and positive.

**Bottom Rollers :** 922 concealed

Bottom rollers supported on thrust bearings

Both top guide rollers and bottom rollers are designed to suit the rebate in standard aluminium door rails.

#### Hinges:

It is recommended that proprietary hinges are used to suit the aluminium rails and stile used to construct the leaves.

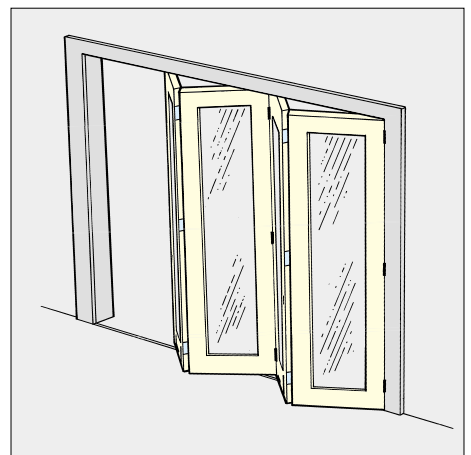
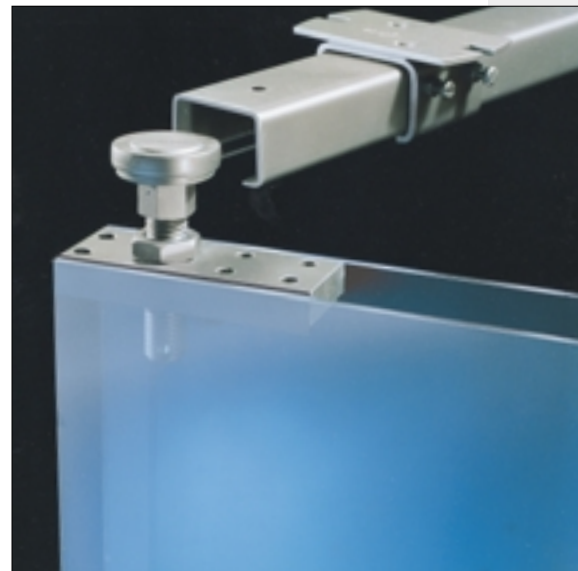
On leaves up to 3000mm fit 3 hinges high, above 3000mm fit 4 hinges.

**Rail:** 918

Standard lengths 1500mm and 3000mm.

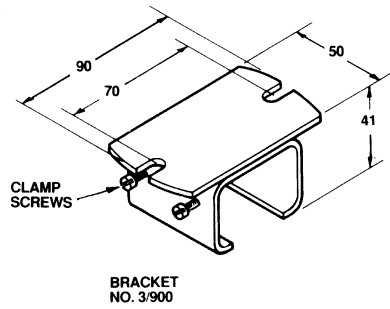
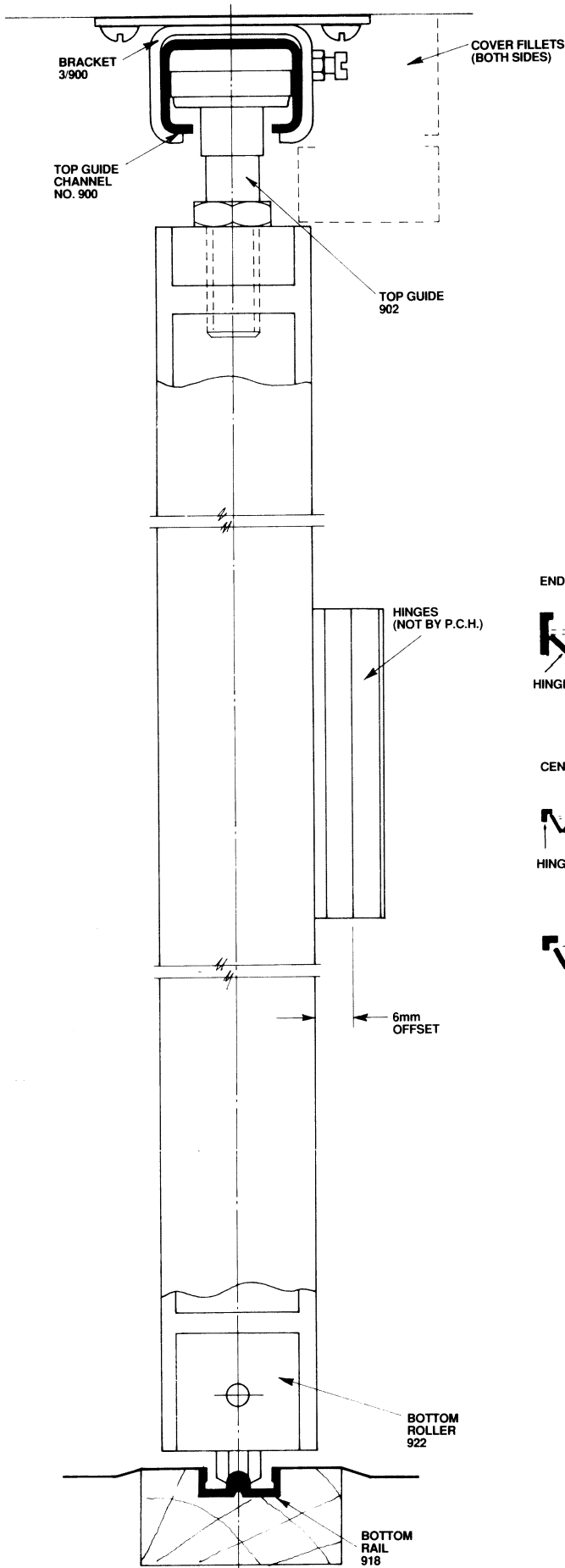
Pre-drilled and countersunk for wood or lugging into concrete.

**Accessories:** Flush Pulls, Flush Bolts and Locks.

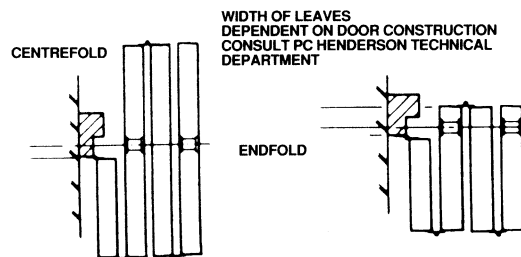
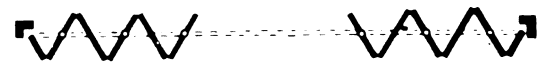
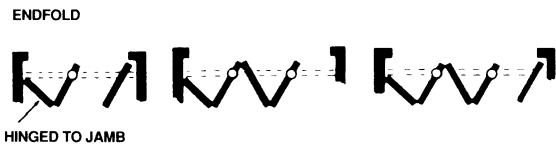


Standard Application

# ARCADE ENDFOLD & CENTREFOLD A70



## EXAMPLE PLAN DETAILS



# TITAN CANTILEVER METAL GATES

EACH GATE WEIGHT MAX 550 or 1000kg

## APPLICATION

- ▶ Titan is a high quality, robust and heavy duty cantilever gear for sliding metal gates.
- ▶ Titan is suitable for industrial and commercial use.
- ▶ It is ideal for security and traffic control and is designed for use where the road surface may be uneven or where the roadway has to be free of rails and channels.
- ▶ Due to its construction Titan offers security and maximum weather protection as the rollers are located internally within the track.

## GATE SPECIFICATION

	Automated	Manual
Max Gate Width	10m	10m
Max Gate Weight	550kg	1000kg
Gate Thickness	80-200mm	80-200mm

Gates should be fabricated from welded steel section.  
Track should be welded to the bottom rail of the gate.  
Side clearance should be great enough to allow for the clear opening width plus the required overhang length of the gate (refer to chart).  
Rollers should be mounted on substantial concrete footings minimum width of 500mm and depth of 800mm and spaced as far apart as possible allowing for end rollers 701 (301mm).



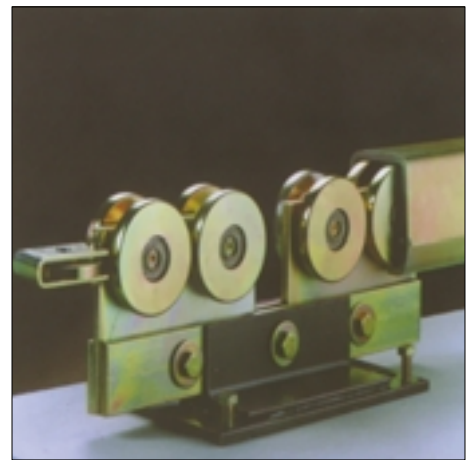
## GEAR SPECIFICATION

Track:	700 (5mm thickness) or 710 (7mm thickness)
Material	steel zinc plated, standard length 6m
Bottom Rollers (2 per gate)	704, 708 or 718 (refer to chart)
End Guide (2 per gate)	702 or 712 (refer to chart)
End Rollers (2 per gate)	701
Top Guide (2 per gate)	703 Side wall (screwed) or 703C Side wall (concrete)

## HOW TO CHOOSE YOUR GATE GEAR

Choose gate type, manual or automatic. Read across to required gate opening width, then read downward to estimated gateweight. Shaded area indicates roller type and overhang length required.

- Use a pair of rollers No.704 and track No.700    □ Use a pair of rollers No.708 and track No.700
- Use a pair of rollers No.718 and track No.710



### MANUAL

		OPENING WIDTH (m)																				
		2	2.5	3	3.5	4	4.5	5	5.5	6	6.5	7	7.5	8	8.5	9	9.5	10				
GATE HEIGHT	200kg	1.7	1.7	1.7	1.8	1.9	2.0	2.1	2.3	2.4	1.7	1.7	1.7	1.8	1.9	1.9	2.0	2.0				
	300kg	2.1	2.3	2.6	2.8	3.1	3.3	1.8	3.6	1.9	3.8	2.0	4.1	2.1	2.2	2.3	2.5	2.6	2.7	2.8	2.9	3.0
	400kg			1.8	2.0	2.2	2.4	2.6	2.8	2.9	3.1	3.3	3.4	3.6	3.8	3.9	4.1	4.3				
	500kg					3.1	3.3	3.6	3.8	4.1	4.3	4.6	2.1	2.2	2.2	2.3	2.4	2.5				
	600kg							2.1	2.1	2.1	2.2	2.4	2.5	2.6	2.7	2.8	2.9	3.0				
	700kg							2.2	2.4	2.5	2.6	2.8	2.9	3.0	3.2	3.3	3.5	3.6				
	800kg							2.6	2.8	2.9	3.1	3.3	3.4	3.6	3.8	3.9	4.1	4.3				
	900kg							3.0	3.2	3.4	3.7	3.9	4.1	4.3	4.5	4.7						
	1000kg							3.6	3.8	4.0	4.3	4.6										

### AUTOMATIC

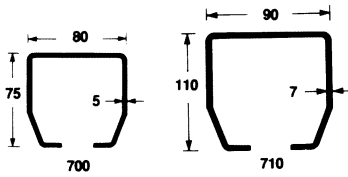
		OPENING WIDTH (m)																								
		2	2.5	3	3.5	4	4.5	5	5.5	6	6.5	7	7.5	8	8.5	9	9.5	10								
GATE HEIGHT	100kg	1.7	1.7	1.7	1.7	1.7	1.7	1.7	1.8	1.9	2.0															
	150kg	1.7	1.9	2.1	2.3	2.5	1.7	2.7	2.8	1.9	3.0	2.0	3.2	2.1												
	200kg	2.5	2.8	1.8	3.2	1.9	3.5	2.1	3.8	2.3	4.2	2.4	4.5	2.6	4.8	2.8	5.2	2.9	1.7	1.7	1.7	1.8	1.9	1.9	2.0	2.0
	250kg	2.1	2.4	2.7	3.0	3.2	3.5	3.8	4.1	1.7	4.3	1.8	1.9	2.0	2.1	2.2	2.3	2.3	2.4	2.5						
	300kg	2.7	3.1	3.5	3.9	4.2	4.6	1.8	5.0	1.9	5.4	2.0	5.7	2.1	2.3	2.4	2.5	2.6	2.7	2.8	2.9	3.0	3.0	3.0	3.0	3.0
	350kg								2.1	2.2	2.4	2.5	2.6	2.8	2.9	3.0	3.2	3.3	3.5	3.6						
	400kg								2.4	2.6	2.8	2.9	3.1	3.3	3.4	3.6	3.8	3.9	4.1	4.3						
	450kg								2.8	3.0	3.2	3.5	3.7	3.9	4.1	4.3	4.5	4.7								
	500kg								3.3	3.6	3.8	4.1	4.3	4.6												
	550kg								3.9	4.2	4.5	4.8														

OVERHANG LENGTH IN METRES IS SHOWN IN THE BOXES

# TITAN CANTILEVER

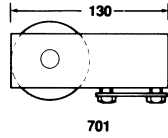
## CHOICE OF GEARS

### TRACKS

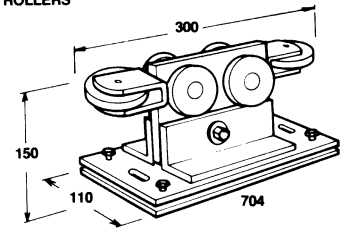


Available in 6mm lengths.

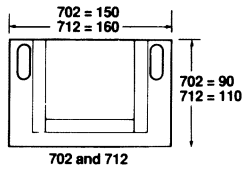
### END ROLLER



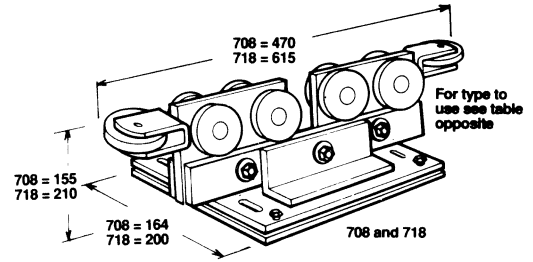
### ROLLERS



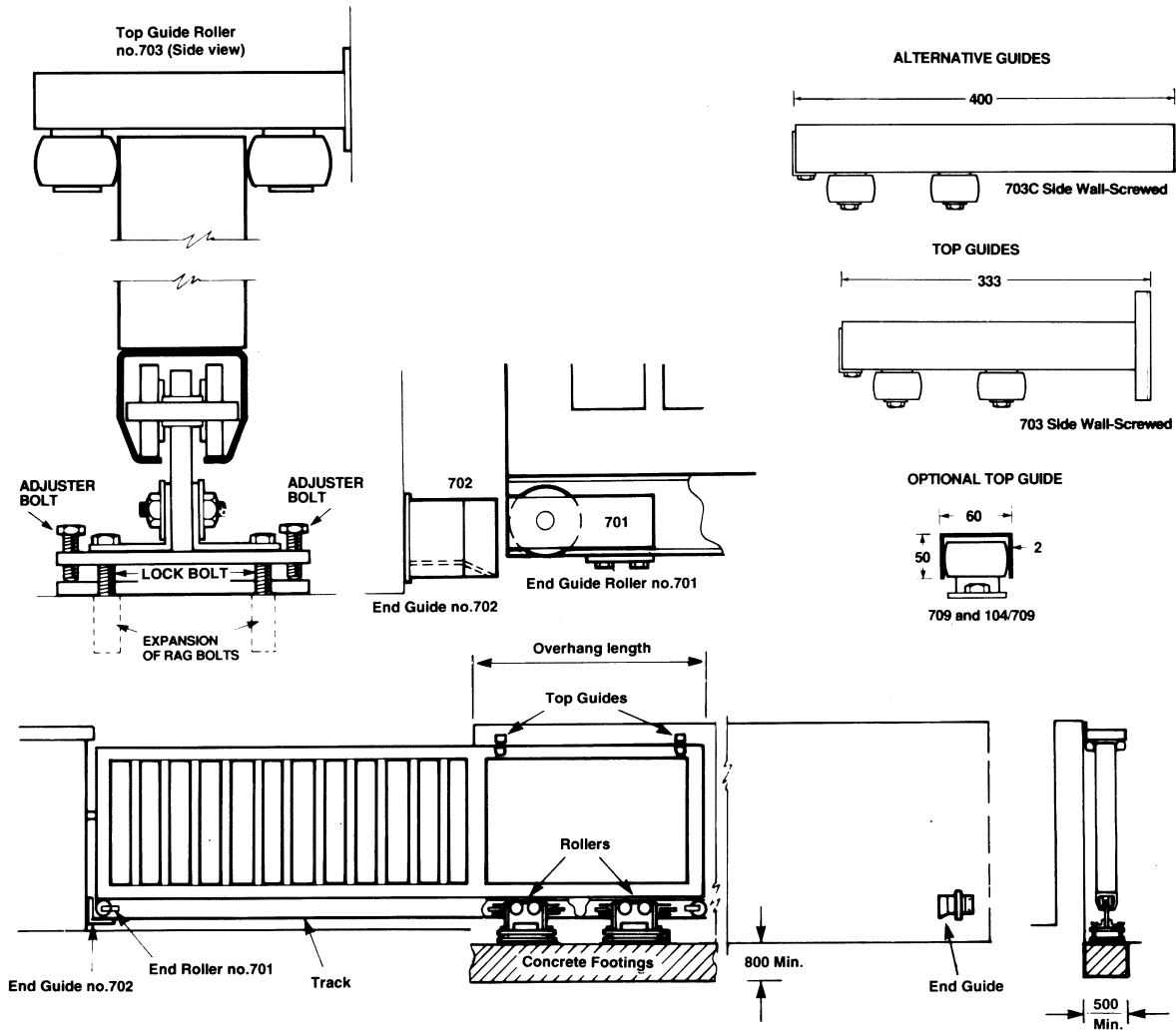
END GUIDE 702 for track 700  
712 for track 710



702 and 712



## SECTION AND END ELEVATION DETAILS



Note: Rollers should be set as far apart as possible but allow space for end roller no.701 (130mm) at both track ends.

# OVERHEAD TRACK 301

INDIVIDUAL LOAD MAX 140kg or 190kg

## APPLICATION

- ▶ Overhead track systems allow the easy movement of equipment throughout the work place.
- ▶ Suitable for commercial, industrial, and agricultural uses.

## LOAD SPECIFICATION

For Track	301	301H
Max load weight straight run	135kg	190kg
Max load weight curved run	110kg	140kg

## GEAR SPECIFICATION

Track - straight	301 (2mm thickness)
	301H (3mm thickness)
Material:	galvanised steel
Standard Lengths:	1800mm, 2000mm, 2500mm, 3000mm, 4000mm and 6000mm
Track - curved	600B (2mm thickness)
	600BH (3mm thickness)

Curves have 581 radius with 152mm straight ends for joining up with straight track sections.

### Brackets:

Soffit fix - single track 3A/301 aluminium alloy die castings

Fix at every 900mm max (600mm or less for heavier loads), and track joints.

The fixing may be direct to the existing overhead structure but it is important that bracket centres are maintained and provision made for curves where required. A check should be made to ensure that the structure is capable of supporting the track with its moving loads.

### Hangers

Indirect fixing to load:

Straight or curved track 70/301 2 wheel hanger with ring

Straight or curved track 76/301 4 wheel hanger

Straight track 71P/301 4 wheel hanger

These hangers are ball bearing lubricated for life. All steel parts are rustproofed by electro-zinc plating or painting.

Direct fixing to load or special fabricated carrier:

56A/S 4 wheel

56 1/2 A/S 2 wheel

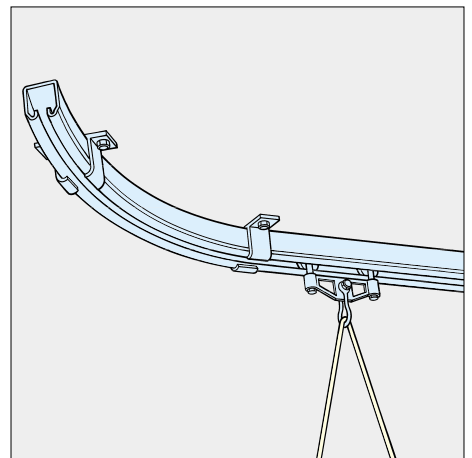
## HANGER/TRACK CAPACITIES

Systems are individually designed for the application and load, and can be straight and /or curved.

The details given below are a general guide to the load capacities available on each hanger; but consideration needs to be given to the type of load to be carried and the effect of hanger bunching. Please discuss your application with Henderson's Technical Department.

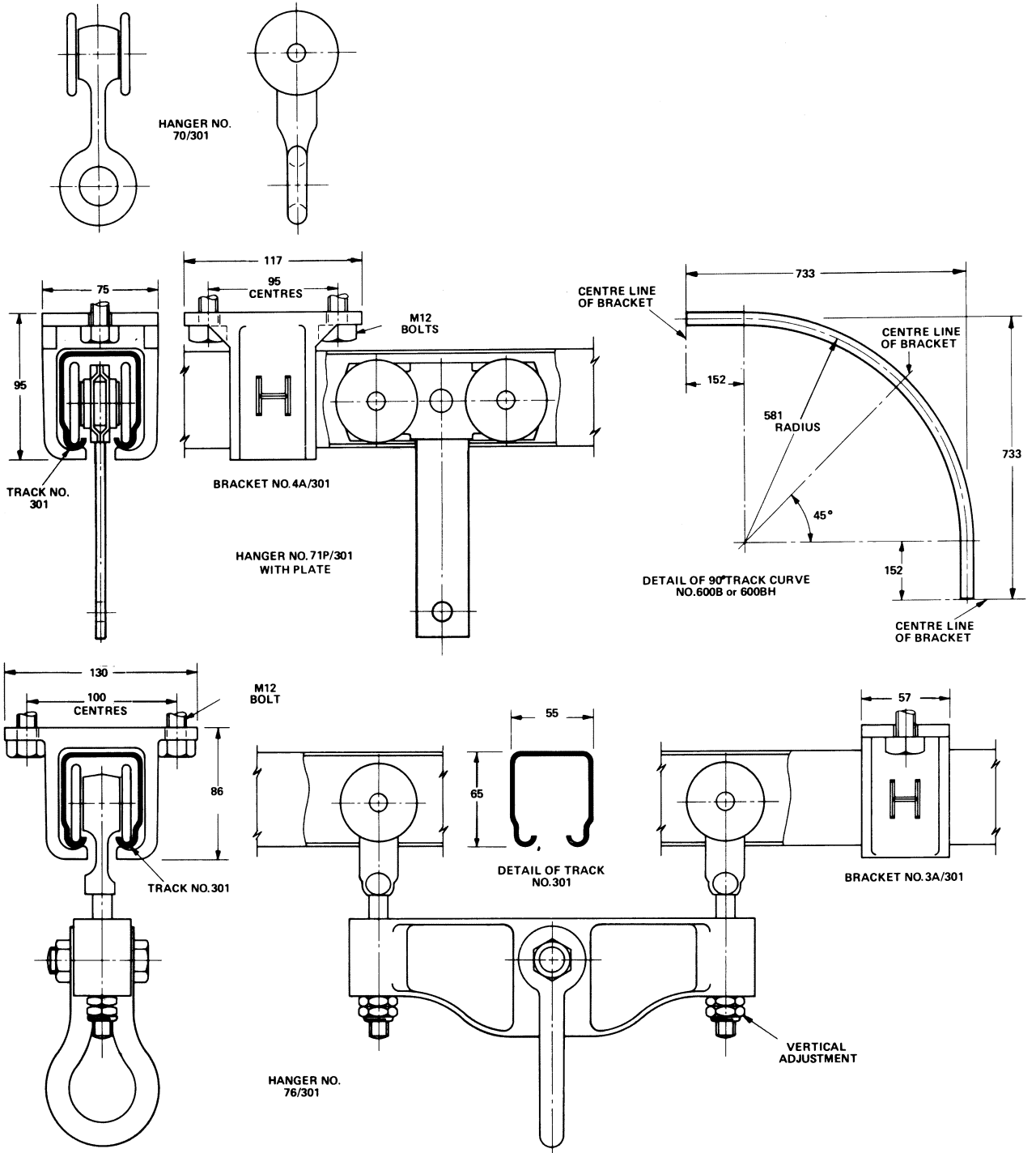
HANGER	TRACK 301		TRACK 301H	
	STRAIGHT	CURVED	STRAIGHT	CURVED
70/301 or 56 1/2 A/S	42kg	30kg	70kg	50kg
71P/301 or 56A/S	85kg	—	140kg	—
76/301	135kg	110kg	190kg	140kg

## STRAIGHT AND CURVED TRACK SYSTEMS TOP HUNG



Standard Application

# OVERHEAD TRACK 301



# OVERHEAD TRACK 305

INDIVIDUAL LOAD MAX 200kg or 225kg

## STRAIGHT AND CURVED TRACK SYSTEMS TOP HUNG

### APPLICATION

- ▶ Overhead track systems allow the easy movement of equipment throughout the work place.
- ▶ Suitable for heavier commercial, industrial and agricultural applications.

### LOAD SPECIFICATION

<b>For Track</b>	<b>305</b>
Max load straight run	225 kg
Max load curved run	200 kg

### GEAR SPECIFICATION

Track - straight	305 (3mm thickness)
Material:	galvanised steel
Standard Lengths:	1800mm, 2000mm, 2500mm, 3000mm, 4000mm and 6000mm

**Track - curved** 600D (3mm thickness)  
Track curves have a 581mm radius with 152mm straight ends for joining to straight track sections.

#### Brackets:

soffit fixing	3A/301	aluminium alloy pressure die casting
soffit fixing	4A/301	aluminium alloy pressure die casting

Fix at 900mm centres maximum (600mm for heavier loads).

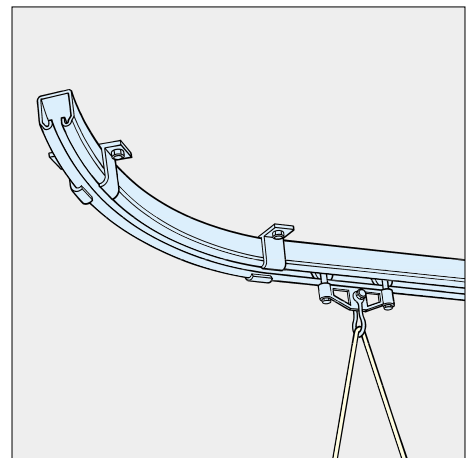
Joining brackets 3AX/305 or 4AX/305 are recommended on all track joints.

The overhead structure should be examined by an engineer as to its suitability for supporting the desired loadings.

#### Hangers

Indirect fixing to load:  
Straight and curved track section 76/305 4 wheeled hanger

Direct fixing to load:  
Straight track section only 56C/S 4 wheeled hanger  
Hangers are fitted with steel wheels on maintenance free sealed for life precision ball bearings.  
All steel parts are electro-zinc plated.



Standard Application

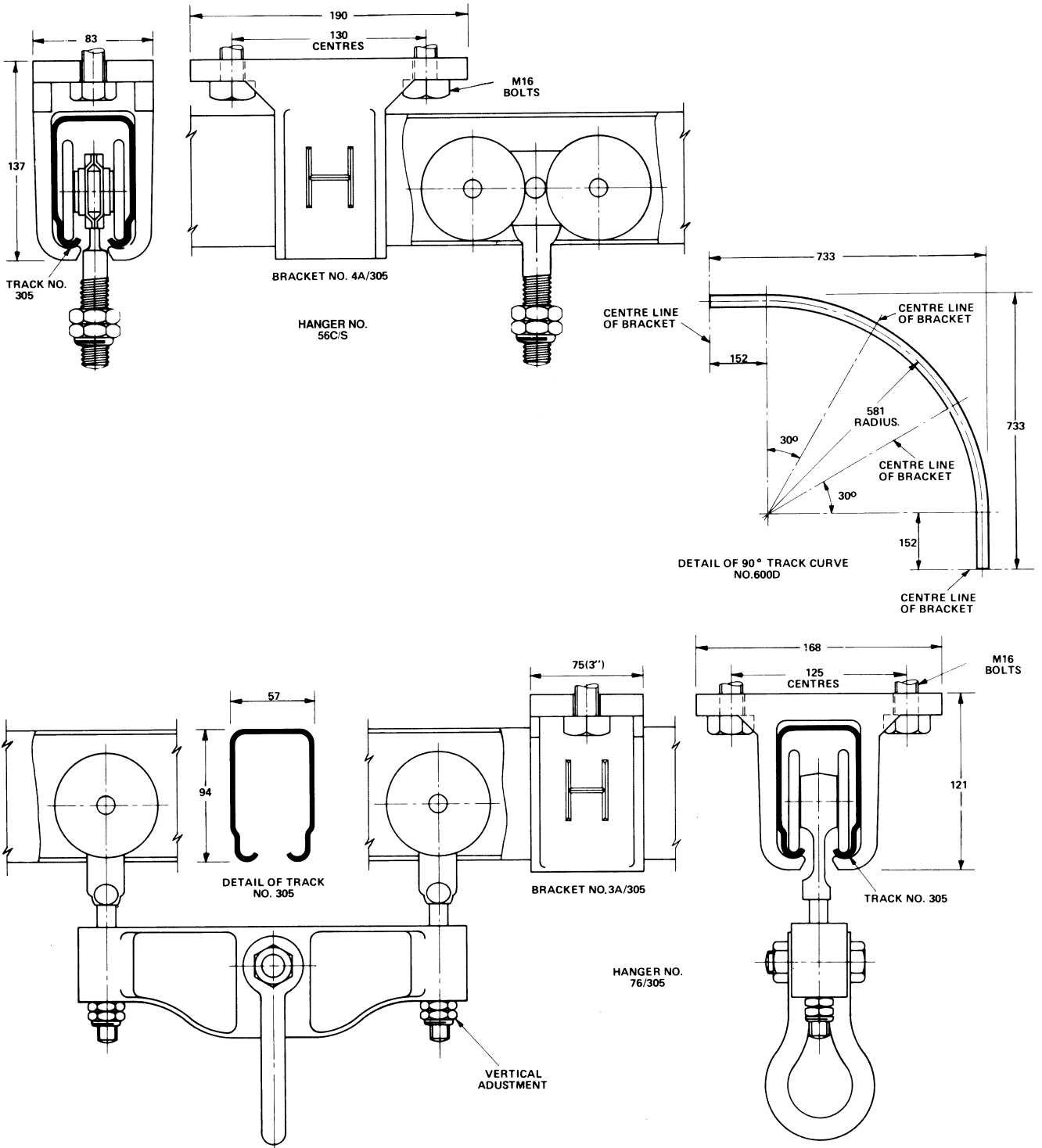
### HANGER/TRACK CAPACITIES

Systems are individually designed for the application and load, and can be straight and /or curved.

The details given below are a general guide to the load capacities available on each hanger, but consideration needs to be given to the type of load to be carried and the effect of hanger bunching. Please discuss your application with Henderson's Technical Department

HANGER	TRACK 305	
	STRAIGHT	CURVED
56CS	220g	—
76/305	225kg	200kg

# OVERHEAD TRACK 305





# INDUSTRIAL CURTAINS CABLE CARRYING SYSTEMS

INDIVIDUAL LOAD MAX 5kg, 20kg or 40kg

## APPLICATION

- ▶ Light overhead track for industrial curtains.
- ▶ The track will also support electrical or other cables required for travelling cranes, gantries or moving machinery.
- ▶ Track will also carry small hand machinery, leaving working areas clear.

## LOAD SPECIFICATION

For Track	280	290
Industrial curtains		
Max Hanger Capacity	5kg	20kg
Cable Carriers		
Max Hanger Capacity	-	40kg

## GEAR SPECIFICATION

**Track - straight** 280 (1.2mm thickness) or 290 (2mm thickness)  
 Material: galvanised steel  
 Standard lengths: 1800mm, 2000mm, 2500mm, 3000mm, 4000mm and 6000mm (290 track only).

**Tracked - curved** 280TC (1.2mm thickness) or 6000K (2mm thickness)  
 280 track curves have a 381mm radius with 230mm straight ends for joining to straight track sections.  
 290 track curves have a 581mm radius with 152mm straight ends for joining to straight track sections.

**Brackets:** 290  
 soffit fixing 3A/290 aluminium alloy pressure die castings  
 soffit fixing 4A/290 aluminium alloy pressure die castings  
 face fixing 1A/290 aluminium alloy pressure die castings

Fix at every 900mm centres (maximum).

Joining brackets 3AX/290, 4AX/290 or 1AX/290 are recommended on all track joints.  
 The overhead structure should be examined by an engineer as to its suitability for supporting the desired loadings.

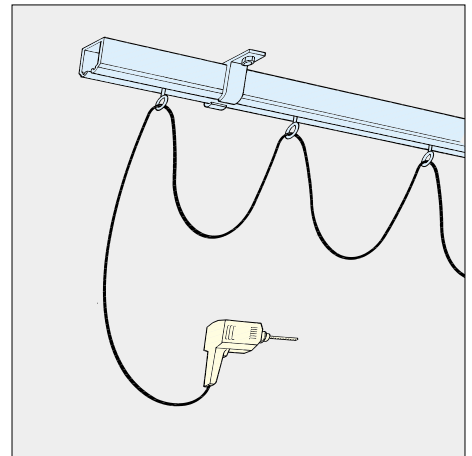
280 track is fitted direct to the structure, track and track curves are supplied pre-drilled.

**Hangers:** 280 290  
 curtains 288H 58K/N  
 cable carrier 56K/N

288H hanger and 58K/N hanger are supplied with 'S'hook.

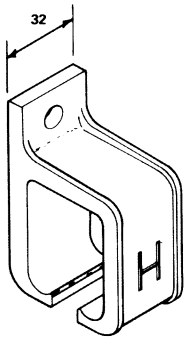
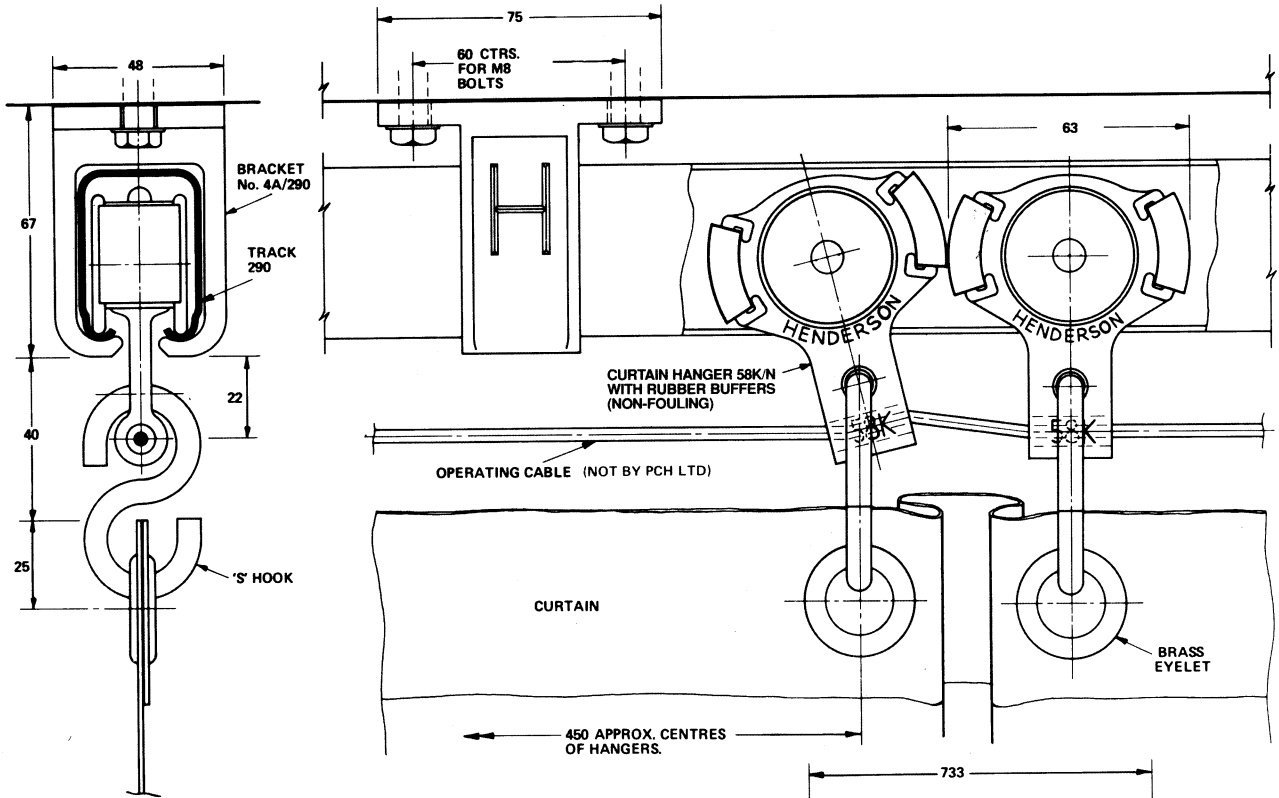
58K/N is fitted with non-fouling rubber buffers to prevent fouling when bunching together.

## STRAIGHT AND CURVED TRACK SYSTEMS TOP HUNG

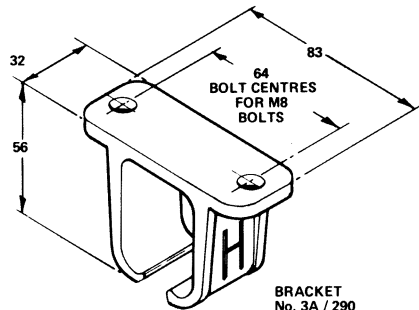


Standard Application

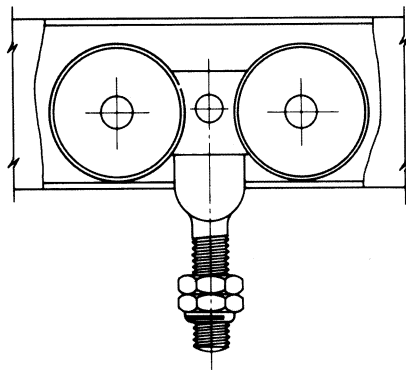
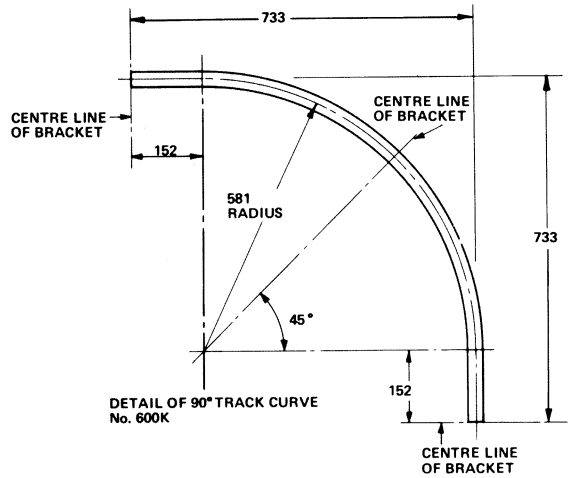
# INDUSTRIAL CURTAIN CABLE CARRYING SYSTEMS



BRACKET No. 1A / 290



ALTERNATIVE BRACKETS



HANGER NO. 56K/N (CABLE CARRIER)