

commercial sliding gear

introduction to commercial sliding gear

straight sliding

folding

multidirectional

H

E

N

D

E

R

S

O

N



commercial sliding gear

Henderson commercial gear is suitable for doors weighing up to 500kg.

It is ideal for applications such as shop fronts, hotels, conference centres and offices, where smooth action, high performance and aesthetics are important.

There are three models in the range - Husky Glass, Pacer and Flexirol. Between them they provide options for timber, aluminium and glass doors.

Henderson commercial gear offers three modes of operation, straight sliding, folding and multidirectional stacking systems.



All commercial gear systems use aluminium track which can be painted to match interior colours and ceilings. Husky Glass and Pacer track also have the option of clip-on aluminium fascia.



For full technical information on commercial systems please refer to the Commercial Sliding Door Hardware brochure.

STRAIGHT SLIDING

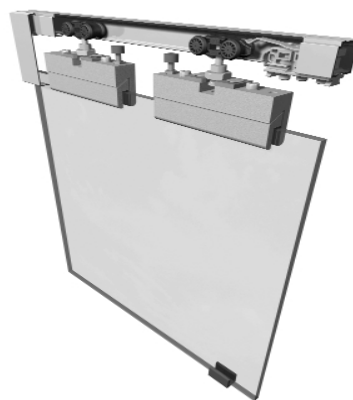


HUSKY GLASS straight sliding

8mm and 10mm glass panels up to 75kg in weight.

APPLICATIONS

Lightweight glass applications such as office doors and small glass partitions.



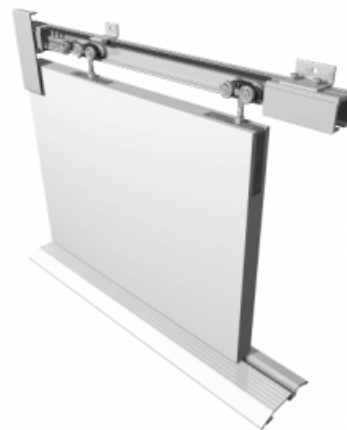
PACER straight sliding

8mm, 10mm and 12mm glass panels up to 130kg in weight.

Timber and Metal doors up to 200kg in weight.

APPLICATIONS

Accommodates both sliding and fixed door panels, making it ideal for interior dividers in offices and shops as well as modern buildings and complexes. Metal doors can be of angle or box section.



FLEXIROL straight sliding

Glass, Timber and Metal doors up to 500kg in weight.

APPLICATIONS

Flexirol is ideally suited to hotels, conference centres, shop fronts, showrooms or any site that requires high performance and attractive finish.



For full technical information on commercial systems please refer to the Commercial Sliding Door Hardware brochure.



commercial sliding gear

FOLDING

PACER folding

Interior timber doors up to 75kg in weight. Available in centrefold and endfold configurations. Also available for exterior applications using endfold timber, glass or aluminium doors up to 65kg in weight.

APPLICATIONS

Residential and Commercial centrefolding (interior only) and endfold doors. Pacer endfold for glass doors accommodates 8mm or 10mm thick tempered glass panels. Ideal for shopfronts and room dividers where space is limited.

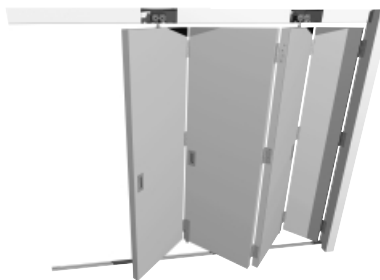


FLEXIROL folding

Interior timber doors up to 125kg in weight. Available in centrefold and endfold configurations. Also available for exterior applications using endfold, timber, glass or aluminium doors up to 125kg in weight.

APPLICATIONS

Heavy commercial centrefolding (interior only) and endfolding doors. Flexirol folding glass profiles accommodate 10mm or 12mm thick tempered or laminated glass panels. Ideal for shopfronts and room dividers using heavy or large folding doors.

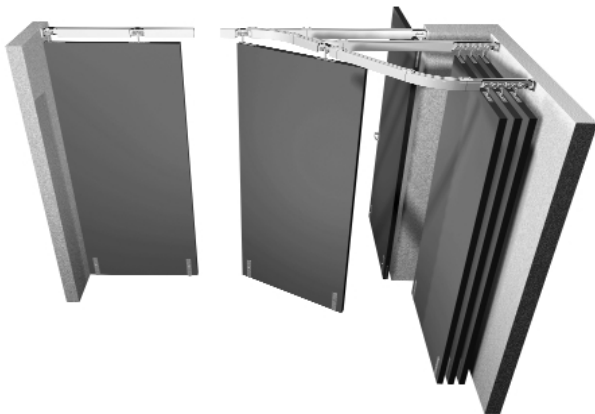


For full technical information on commercial systems please refer to the Commercial Sliding Door Hardware brochure.

MULTIDIRECTIONAL

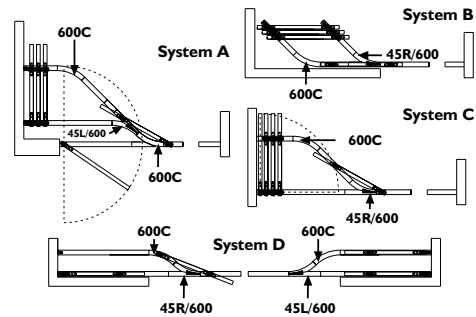
APPLICATIONS

The multidirectional range of systems are ideal for shopfronts, internal partitions, moveable walls, conference rooms and any situation requiring the flexibility of a stacking system.



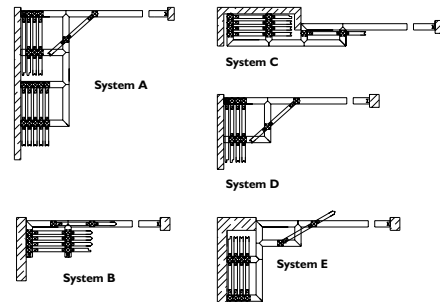
PACER multidirectional

Timber, aluminium and glass doors up to 120kg. Glass panels can be 10mm or 12mm thick tempered or laminated glass. Doors move through a 135° switch to allow the doors to be stacked clear of the opening.



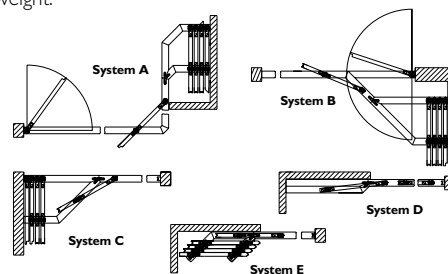
FLEXIROL 90° multidirectional

Flexirol 90° multidirectional systems carry timber, aluminium or glass doors up to 100kg in weight.



FLEXIROL 135° multidirectional

Flexirol 135° multidirectional systems carry timber, aluminium or glass doors up to 500kg in weight.



For full technical information on commercial systems please refer to the Commercial Sliding Door Hardware brochure.