

Securefold

HENDERSON





Window on the world

Securefold is the ultimate in exterior folding systems and opens up building design to a wealth of new possibilities.

The Henderson Securefold System has been designed to maximise the flexibility of a room's living space, removing barriers and enabling the user to have an indoor/outdoor experience by fully opening up exterior walls.

The system which operates with effortless ease combines the benefits of folding doors with uncompromising security, protection from the weather, and the durability of stainless steel.

This modern, contemporary feature will increase available living space whilst allowing natural light to envelope a room.



Proven performance

Established in 1921, P C Henderson has long been acknowledged as a world leader in the design and manufacture of sliding and folding door systems. The versatility of our systems enables tailored solutions to be created which meet specific design requirements.

The 'Henderson' name is synonymous with technical excellence and enduring quality. We are committed to providing the highest level of manufacturing expertise operating within the most demanding certifications ISO 9001: Quality Management Systems and ISO 14001: Environmental Management System.

Securefold is engineered to the same exacting standards. Produced using high grade 316 stainless steel and cutting edge polymer technology, all components have undergone extensive cyclic testing exceeding the maximum European BS EN 1527 grade of 100,000 cycles.

Lying at the heart of the Securefold system are the two and four wheeled load bearing hangers. An uncompromising, solid, 316 stainless steel hanger uses high speed precision stainless steel bearings (selected for their durability) combined with guide bearings machined from state-of-the-art polymer (more advanced than anything we have used before).

The top-hung design creates a discreet, easy to operate system without compromising the beauty of the doors with unsightly cut-outs.





Premium security features

Securefold has been designed in response to an increasingly security conscious market.

Locking Screw: A locking screw mechanism has been incorporated into the design to prevent components from being tampered with or removed when the doors are closed.

Discreet Design: Our experienced designers have created a system with discreet components to give a clean, minimalist finish.

Flushbolt: A key element to the system is the flush bolt. Made from extruded aluminium with stainless steel Ø10mm thick round drop bolt to ensure maximum resistance to attack. The flush bolts are available in three lengths; 190mm, 450mm and 600mm, lockable or unlockable.

Recognised weather resistance

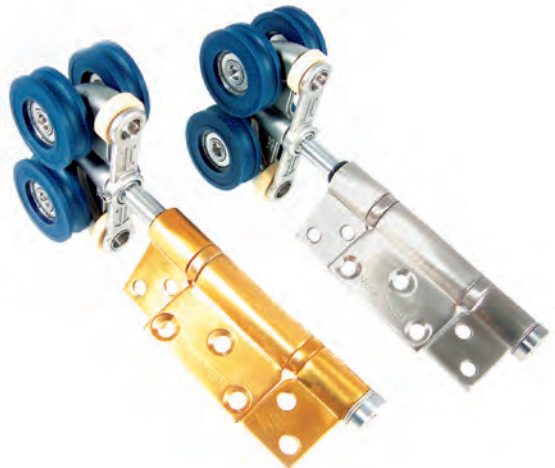
Engineered to withstand the most severe weather conditions. When coupled with quality door panels the system creates a superior weatherproof seal that is equally suited to an interior setting connecting two spaces and creating a soundproof barrier when required.

Corrosion resistance

Made from 316 stainless steel, anodised aluminium track and polymers, Securefold has been designed to resist the elements in the harshest of environments.

Concealed channel

The Securefold bottom channel is neatly concealed under the door leaves to give better weather resistance. This channel is extruded from a durable UV stable black polypropylene to provide maximum performance with an aluminium support channel optional.



Features

- High security locking system
- Severe weather resistance
- Maximum corrosion resistance
- Inward and outward opening options with a range of opening variations
- Concealed channel to enhance appearance
- Precision bearings top and bottom to reduce rolling resistance
- Cycle tested to over 100,000 cycles

Easy Installation

As with all Henderson products Securefold has been designed for maximum performance and ease of installation.

Comprehensive instructions are supplied with every pack and our Technical Services Department are on hand to deal with any specification or installation queries.

Whilst Securefold has been built with precision engineering additional built-in vertical and lateral adjustment mechanisms have been developed to ensure the highest possible finish.

SECUREFOLD SPECIFICATIONS	
MAXIMUM LEAF HEIGHT	3300mm
MAXIMUM LEAF WEIGHT	75kg
MAXIMUM LEAF WIDTH	900mm
LEAF THICKNESS	35-67mm*

* For thick and / or narrow width doors please consult the fitting instructions regarding 'camming'.



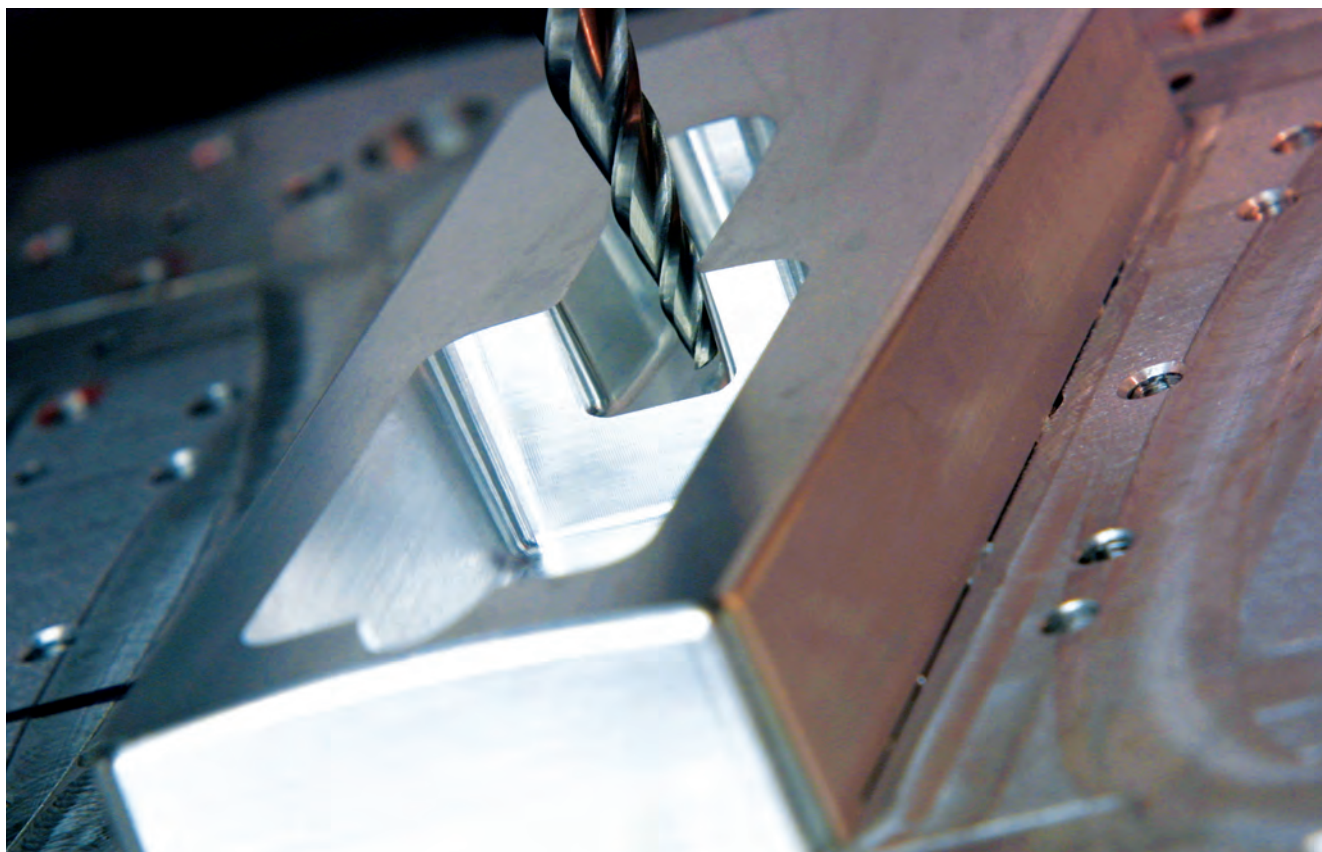
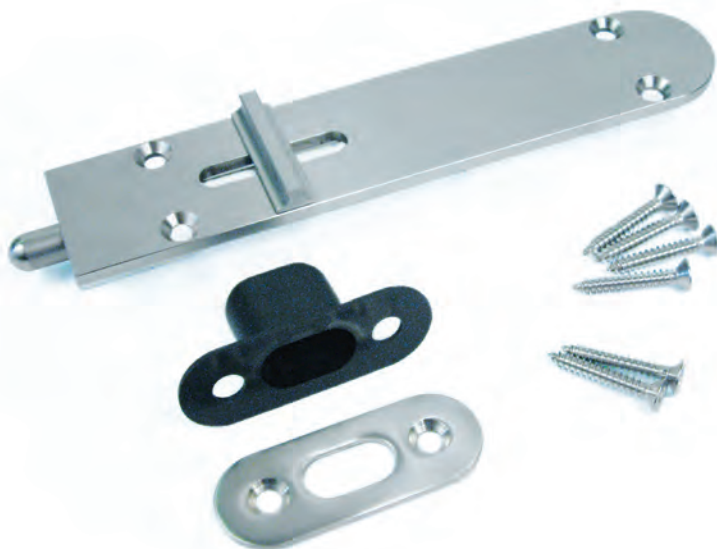


Design in motion

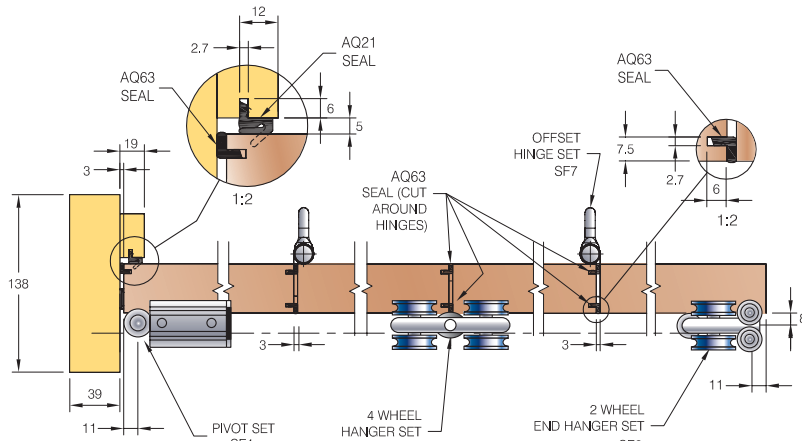
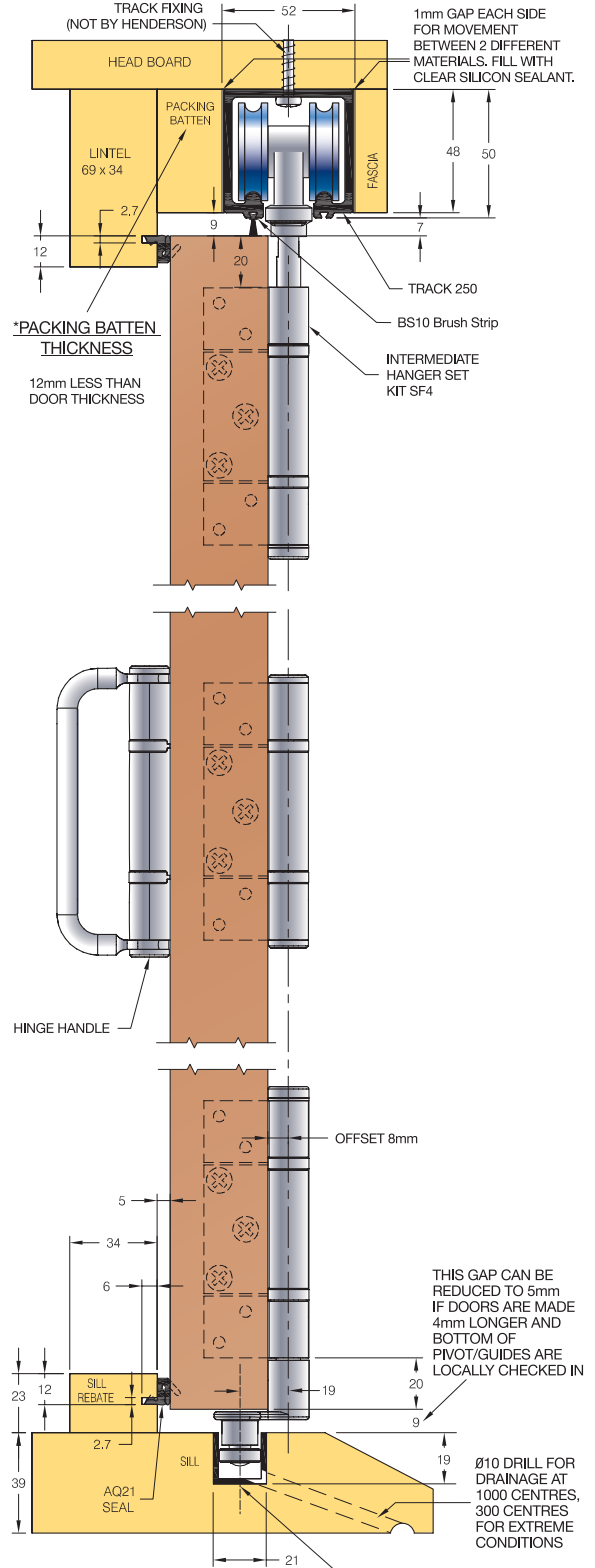
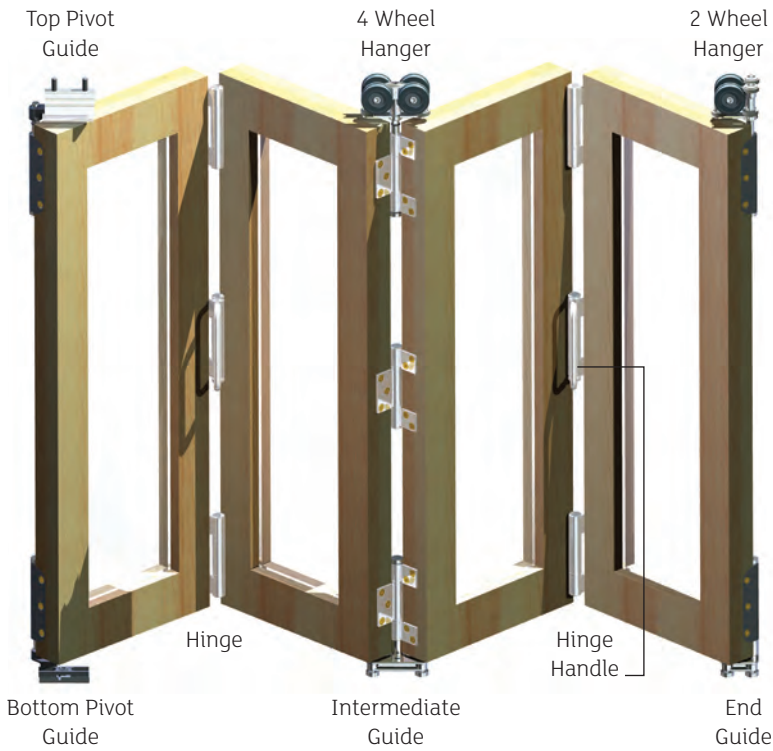
Securefold is set to redefine the way we look at the world. Closed, the doors create an effective secure barrier; open, it provides a functional space with no fixed panels or posts.

This high end product provides a vast range of options to the architect or end user in residential and business applications.

Lockable and non-lockable flush bolts are available in 190mm, 450mm and 600mm sizes, in gold or satin finish.



Securefold system



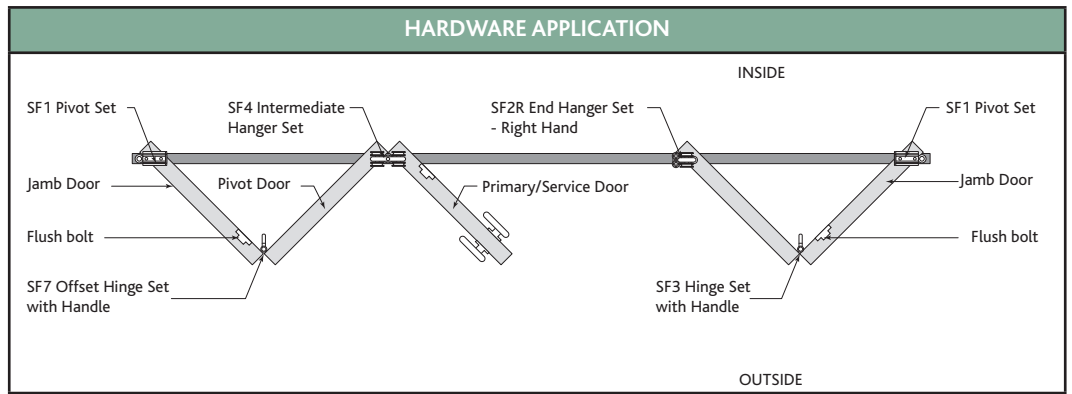
POLYPROPYLENE CHANNEL 94P
WHEN USED IN CONJUNCTION WITH ALUMINIUM SUPPORT CHANNEL 94SC THE OUTER CHANNEL DIMENSIONS BECOME 23H x 25W

Common panel layouts

DOOR CONFIGURATION	
SF1 Pivot Assembly Set	SF6 Hinge Set Offset Inward Opening
SF2R End Hanger Set (RH)	SF7 Hinge Set Offset Outward Opening
SF2L End Hanger Set (LH)	SF8 Rebated End Hanger Meeting
SF3 Hinge Set with Handle	SF9 Intermediate Pivot Hinge (optional)
SF4 Intermediate Hanger Set	SF10 Face Fix Handle (optional)
SF5 Hinge Set Inward Opening	-

	OUTWARD OPENING CONFIGURATION	HARDWARE
2 LEAF		1 x SF1 pivot set 1 x SF3 hinge set with handle 1 x SF2L end hanger set - left hand*
2+1 LEAF		2 x SF1 pivot set 1 x SF3 hinge set with handle 1 x SF2L end hanger set - left hand*
3 LEAF		1 x SF1 pivot set 1 x SF4 intermediate hanger set 1 x SF7 offset hinge set with handle
2+2 LEAF		2 x SF1 pivot set 2 x SF3 hinge set with handle 1 x SF8 rebated end hanger meeting
3+1 LEAF		2 x SF1 pivot set 1 x SF4 intermediate hanger set 1 x SF7 offset hinge set with handle
4 LEAF		1 x SF1 pivot set 1 x SF4 intermediate hanger set 2 x SF7 offset hinge set with handle 1 x SF2L end hanger set - left hand*
3+2 LEAF		2 x SF1 pivot set 1 x SF3 hinge set with handle 1 x SF4 intermediate hanger set 1 x SF7 offset hinge set with handle 1 x SF2R end hanger set - right hand*
4+1 LEAF		2 x SF1 pivot set 1 x SF4 intermediate hanger set 2 x SF7 offset hinge set with handle 1 x SF2L end hanger set - left hand*
5 LEAF		1 x SF1 pivot set 1 x SF3 hinge set with handle 2 x SF4 intermediate hanger set 1 x SF7 offset hinge set with handle
3+3 LEAF		2 x SF1 pivot set 2 x SF4 intermediate hanger set 2 x SF7 offset hinge set with handle
4+2 LEAF		2 x SF1 pivot set 1 x SF3 hinge set with handle 1 x SF4 intermediate hanger set 2 x SF7 offset hinge set with handle 1 x SF8 rebated end hanger meeting
5+1 LEAF		2 x SF1 pivot set 1 x SF3 hinge set with handle 2 x SF4 intermediate hanger set 1 x SF7 offset hinge set with handle
6 LEAF		1 x SF1 pivot set 1 x SF3 hinge set with handle 2 x SF4 intermediate hanger set 2 x SF7 offset hinge set with handle 1 x SF2L end hanger set - left hand*

The systems configurations shown above are viewed from the outside. They can be reversed, if reversed the parts marked * will have to be the opposite handing e.g. "SF2R end hanger set - right hand" will become "SF2L end hanger set - left hand" and "SF2L end hanger set - left hand" will become "SF2R end hanger set - right hand". An SF9 intermediate pivot is optional for doors exceeding 2200mm in height.



	INWARD OPENING CONFIGURATION	HARDWARE
2 LEAF		1 x SF1 pivot set 1 x SF5 hinge set inward opening 1 x SF2R end hanger set - right hand*
2+1 LEAF		2 x SF1 pivot set 1 x SF5 hinge set inward opening 1 x SF2R end hanger set - right hand*
3 LEAF		1 x SF1 pivot set 1 x SF6 offset hinge set inward opening 1 x SF4 intermediate hanger set
2+2 LEAF		2 x SF1 pivot set 2 x SF5 hinge set inward opening 1 x SF8 rebated end hanger meeting
3+1 LEAF		2 x SF1 pivot set 1 x SF6 offset hinge set inward opening 1 x SF4 intermediate hanger set
4 LEAF		1 x SF1 pivot set 2 x SF6 offset hinge set inward opening 1 x SF4 intermediate hanger set 1 x SF2R end hanger set - right hand*
3+2 LEAF		2 x SF1 pivot set 1 x SF4 intermediate hanger set 1 x SF5 hinge set inward opening 1 x SF6 offset hinge set inward opening 1 x SF2L end hanger set - left hand*
4+1 LEAF		2 x SF1 pivot set 1 x SF4 intermediate hanger set 2 x SF6 offset hinge set inward opening 1 x SF2R end hanger set - right hand*
5 LEAF		1 x SF1 pivot set 2 x SF4 intermediate hanger set 1 x SF5 hinge set inward opening 1 x SF6 offset hinge set inward opening
3+3 LEAF		2 x SF1 pivot set 2 x SF4 intermediate hanger set 2 x SF6 offset hinge set inward opening
4+2 LEAF		2 x SF1 pivot set 1 x SF4 intermediate hanger set 1 x SF5 hinge set inward opening 2 x SF6 offset hinge set inward opening 1 x SF8 rebated end hanger meeting
5+1 LEAF		2 x SF1 pivot set 2 x SF4 intermediate hanger set 1 x SF5 hinge set inward opening 1 x SF6 offset hinge set inward opening
6 LEAF		1 x SF1 pivot set 2 x SF4 intermediate hanger set 1 x SF5 hinge set inward opening 2 x SF6 offset hinge set inward opening 1 x SF2R end hanger set - right hand*

The systems configurations shown above are viewed from the inside. They can be reversed, if reversed the parts marked * will have to be the opposite handing e.g. "SF2R end hanger set - right hand" will become "SF2L end hanger set - left hand" and "SF2L end hanger set - left hand" will become "SF2R end hanger set - right hand".



P C Henderson Limited
www.pchenderson.com

P C Henderson Limited

Durham Road, Bowburn, County Durham DH6 5NG, UK
Website: www.pchenderson.com

Technical Sales Team

Telephone 0191 377 7345 Facsimile 0191 377 3116
e-mail: sales@pchenderson.com

Export Department

Telephone +44 (0) 191 377 7346 Facsimile +44 (0) 191 377 0755
e-mail: international@pchenderson.com

P C Henderson (Ireland) Limited

West Link Industrial Estate, Kylemore Road,
Dublin 10, Ireland
Telephone +353 (0) 1 626 0444 Facsimile +353 (0) 1 626 0455
e-mail: sales@pchenderson.ie